

PRODUCT PROGRAM

Product catalog for
robots of the brand

SE Cutter*

PRODUCT PROGRAM 2025

TABLE OF CONTENTS

Robot type

Page


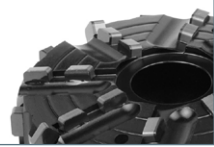





SE Cutter* DN 70-150*

3



The tables of contents in this catalog are interactive. A click will lead you directly to the desired target page.



<p>N•TEC II®</p> 	<p>Field-Proven Standard Diamond Tools with Outstanding Value for Purchase Investment</p> <p>Materials to be processed</p> <ul style="list-style-type: none"> Reinforced Concrete Concrete Concrete Deposits / Fouling Cast Iron Vitrified Clay <p>Page 5</p>
<p>BLACK•LINE</p> 	<p>High-Tech Milling Tools made of PCD with Unbeatable Cutting and Stock Removal Performance for Almost Every Material</p> <p>Materials to be processed</p> <ul style="list-style-type: none"> UV CIPP Roots PVC Felt CIPP <p>Page 7</p>
<p>linerCUT Pro®</p> 	<p>Absolutely Smooth-Running and Precise PCD Cutting Tools for Opening CIPP - Optimized for UV CIPP -</p> <p>Materials to be processed</p> <ul style="list-style-type: none"> UV CIPP PVC Felt CIPP <p>Page 14</p>
<p>linerCUT Pro® 2.0</p> 	<p>Absolutely Smooth-Running and Precise PCD Cutting Tools for Opening CIPP - All Kinds of CIPP and PVC -</p> <p>Materials to be processed</p> <ul style="list-style-type: none"> UV CIPP PVC Felt CIPP <p>Page 15</p>
<p>D•GRIT</p> 	<p>Milling Tools with Diamond Granules for Opening CIPP - Optimal for UV CIPP and Lined Cast Iron Pipes -</p> <p>Materials to be processed</p> <ul style="list-style-type: none"> UV CIPP PVC Felt CIPP <p>Page 16</p>
<p>HM•LINE</p> 	<p>Cost-Efficient Milling Tools with Carbide Granulate Tipping for Opening and Reworking CIPP</p> <p>Materials to be processed</p> <ul style="list-style-type: none"> UV CIPP Roots PVC Felt CIPP <p>Page 18</p>
<p>VHM•LINE</p> 	<p>Special Milling Tools for Processing Steel and Cast Iron</p> <p>Materials to be processed</p> <ul style="list-style-type: none"> Cast Iron Steel <p>Page 21</p>



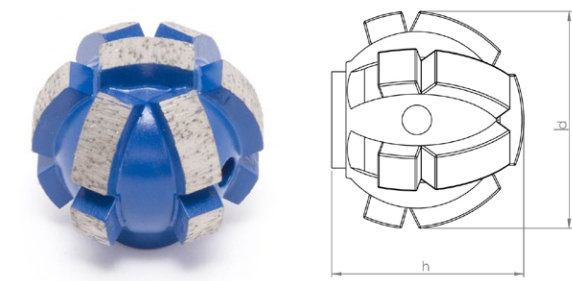
Functional Accessories

High-quality brushes, adapters, extensions, etc.

Page 22



N•TEC II® Ball milling cutter



Materials to be processed

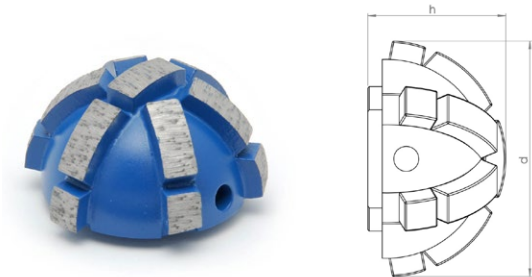
- Reinforced Concrete
- Concrete
- Deposits / Fouling
- Cast Iron
- Vitrified Clay

Field of Application

- Preparatory milling of laterals
- Removal of intruding laterals
- Removal of intruding obstacles

Article-No.	d inch	h inch	Segments	Weight pounds
20021 3/8"UNF	1.6	1.5	13	0.44

N•TEC II® Half-ball milling cutter



Materials to be processed

- Reinforced Concrete
- Concrete
- Deposits / Fouling
- Cast Iron
- Vitrified Clay

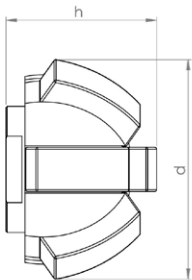
Field of Application

- Preparatory milling of laterals
- Removal of intruding laterals
- Frontal milling
- Removal of intruding obstacles

Article-No.	d inch	h inch	Segments	Weight pounds
20034 3/8"UNF	2.0	1.1	13	0.33



N•TEC II® Half-ball milling cutter



Materials to be processed

- Reinforced Concrete
- Concrete
- Deposits / Fouling
- Cast Iron
- Vitrified Clay

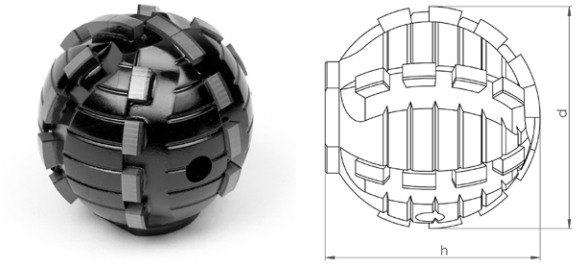
Field of Application

- Preparatory milling of laterals
- Removal of intruding laterals
- Frontal milling
- Removal of intruding obstacles

Article-No.	d inch	h inch	Segments	Weight pounds
20035 3/8"UNF	1.4	1.0	7	0.22



BLACK•LINE Ball milling cutter



Materials to be processed

- UV CIPP
- PVC
- Roots
- Felt CIPP

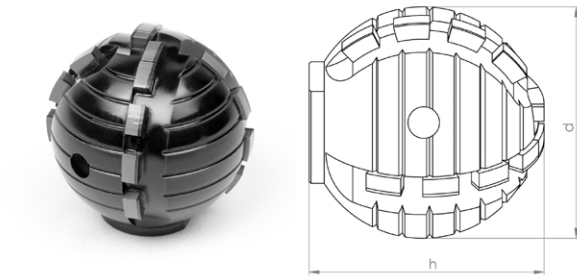
Note: Only suitable for processing CIPP liners and PVC and for cutting roots!

Field of Application

- Opening of laterals and inlet lines
- Removal of intruding obstacles

Article-No.	d inch	h inch	Segments	Weight pounds
BL 11446 3/8"UNF	1.6	1.7	26	0.55

BLACK•LINE Ball milling cutter



Materials to be processed

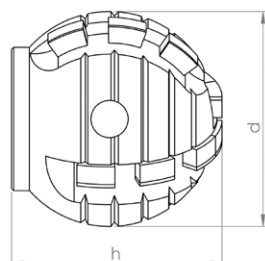
- UV CIPP
- PVC
- Roots
- Felt CIPP

Note: Only suitable for processing CIPP liners and PVC and for cutting roots!

Field of Application

- Opening of laterals and inlet lines
- Removal of intruding obstacles

Article-No.	d inch	h inch	Segments	Weight pounds
BL 11414 3/8"UNF	1.6	1.7	18	0.55


BLACK-LINE Ball milling cutter

Materials to be processed

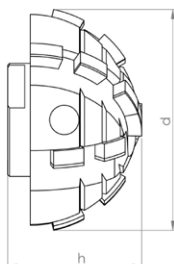
- UV CIPP
- PVC
- Roots
- Felt CIPP

Note: Use on steel-reinforced concrete will destroy the cutting elements!

Field of Application

- Opening of laterals and inlet lines
- Removal of intruding obstacles

Article-No.	d inch	h inch	Segments	Weight pounds
BL 11408 3/8"UNF	1.2	1.3	14	0.22

BLACK-LINE Half-ball milling cutter

Materials to be processed

- UV CIPP
- PVC
- Roots
- Felt CIPP

Note: Use on steel-reinforced concrete will destroy the cutting elements!

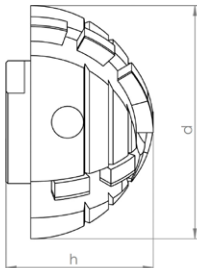
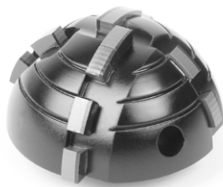
Field of Application

- Opening of laterals and inlet lines
- Removal of intruding obstacles

Article-No.	d inch	h inch	Segments	Weight pounds
BL 11465 3/8"UNF	1.6	1.0	16	0.33



BLACK-LINE Half-ball milling cutter



Materials to be processed

- UV CIPP
- PVC
- Roots
- Felt CIPP

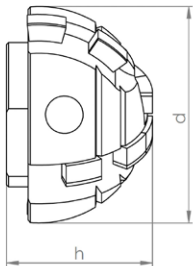
Note: Use on steel-reinforced concrete will destroy the cutting elements!

Field of Application

- Opening of laterals and inlet lines
- Removal of intruding obstacles

Article-No.	d inch	h inch	Segments	Weight pounds
BL 11428 3/8"UNF	1.6	1.0	12	0.15

BLACK-LINE Half-ball milling cutter



Materials to be processed

- UV CIPP
- PVC
- Roots
- Felt CIPP

Note: Use on steel-reinforced concrete will destroy the cutting elements!

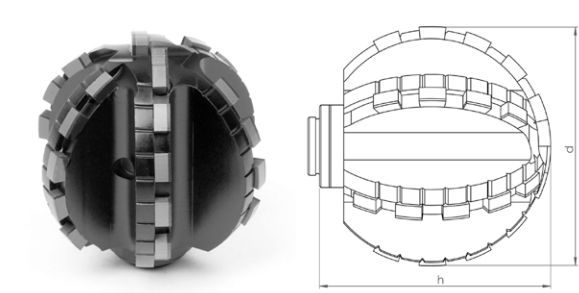
Field of Application

- Opening of laterals and inlet lines
- Removal of intruding obstacles

Article-No.	d inch	h inch	Segments	Weight pounds
BL 11429 3/8"UNF	1.2	0.8	8	0.13



BLACK•LINE Ball milling cutter Type ProView®



Materials to be processed

- UV CIPP
- PVC
- Roots
- Felt CIPP

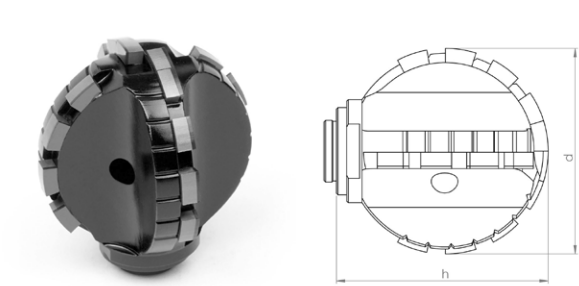
Note: Only suitable for processing CIPP liners and PVC and for cutting roots!

Field of Application

- Opening of laterals and inlet lines
- Removal of intruding obstacles

Article-No.	d inch	h inch	Segments	Weight pounds
BL 11108 3/8"UNF	2.0	1.8	30	0.33

BLACK•LINE Ball milling cutter Type ProView®



Materials to be processed

- UV CIPP
- PVC
- Roots
- Felt CIPP

Note: Only suitable for processing CIPP liners and PVC and for cutting roots!

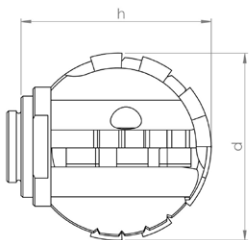
Field of Application

- Opening of laterals and inlet lines
- Removal of intruding obstacles

Article-No.	d inch	h inch	Segments	Weight pounds
BL 11103 3/8"UNF	1.6	1.5	18	0.33



BLACK-LINE Ball milling cutter Type ProView®



Materials to be processed

- UV CIPP
- PVC
- Roots
- Felt CIPP

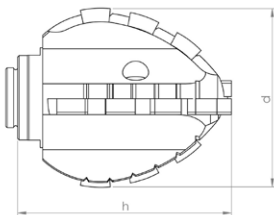
Note: Only suitable for processing CIPP liners and PVC and for cutting roots!

Field of Application

- Opening of laterals and inlet lines
- Removal of intruding obstacles

Article-No.	d inch	h inch	Segments	Weight pounds
BL 11101 3/8"UNF	1.3	1.2	14	0.13

BLACK-LINE Double-cone milling cutter Type ProView®



Materials to be processed

- UV CIPP
- PVC
- Roots
- Felt CIPP

Note: Only suitable for processing CIPP liners and PVC and for cutting roots!

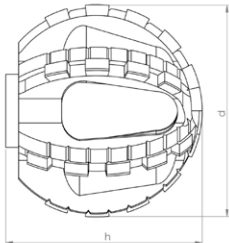
Field of Application

- Opening of laterals and inlet lines

Article-No.	d inch	h inch	Segments	Weight pounds
BL 11107 3/8"UNF	1.4	1.6	16	0.22



BLACK•LINE Ball milling cutter Type ProView®



Materials to be processed

- UV CIPP
- PVC
- Roots
- Felt CIPP

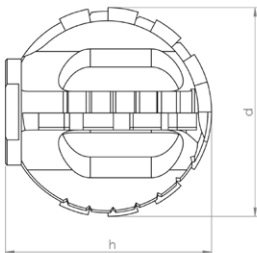
Note: Only suitable for processing CIPP liners and PVC and for cutting roots!

Field of Application

- Opening of laterals and inlet lines
- Removal of intruding obstacles

Article-No.	d inch	h inch	Segments	Weight pounds
BL 11114 3/8"UNF	2.0	1.8	30	0.33

BLACK•LINE Ball milling cutter Type ProView®



Materials to be processed

- UV CIPP
- PVC
- Roots
- Felt CIPP

Note: Only suitable for processing CIPP liners and PVC and for cutting roots!

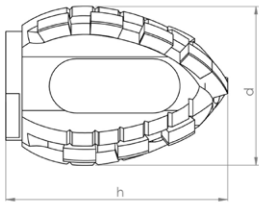
Field of Application

- Opening of laterals and inlet lines
- Removal of intruding obstacles

Article-No.	d inch	h inch	Segments	Weight pounds
BL 11110 3/8"UNF	1.6	1.5	18	0.33



BLACK•LINE Double-cone milling cutter Type ProView®



Materials to be processed

- UV CIPP
- PVC
- Roots
- Felt CIPP

Note: Only suitable for processing CIPP liners and PVC and for cutting roots!

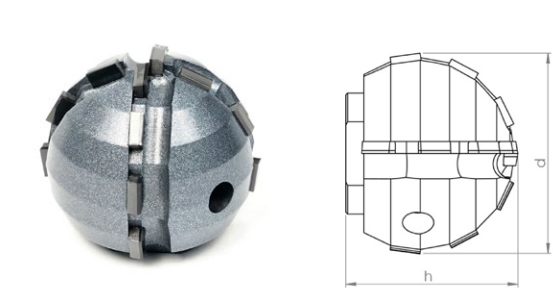
Field of Application

- Opening of laterals and inlet lines

Article-No.	d inch	h inch	Segments	Weight pounds
BL 11112 3/8"UNF	1.4	1.6	16	0.22



linerCUT Pro® Ball milling cutter



Materials to be processed

- UV CIPP
- Felt CIPP
- PVC

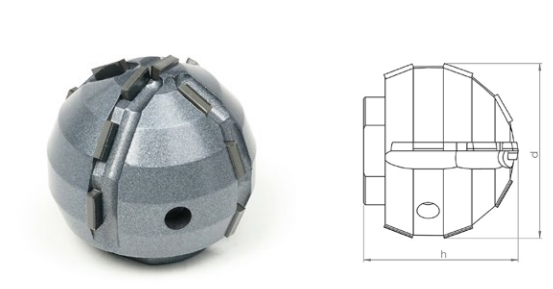
Note: Only suitable for processing CIPP liners and PVC!

Field of Application

- Opening of laterals and inlet lines

Article-No.	d inch	h inch	Segments	Weight pounds
BL 11443 3/8"UNF	1.6	1.4	12	0.44

linerCUT Pro® Ball milling cutter



Materials to be processed

- UV CIPP
- Felt CIPP
- PVC

Note: Only suitable for processing CIPP liners and PVC!

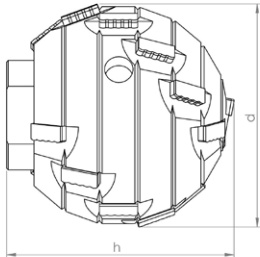
Field of Application

- Opening of laterals and inlet lines

Article-No.	d inch	h inch	Segments	Weight pounds
BL 11442 3/8"UNF	1.2	1.1	14	0.22



linerCUT Pro® 2.0 Ball milling cutter



Materials to be processed

- UV CIPP
- Felt CIPP
- PVC

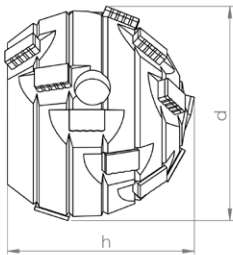
Note: Only suitable for processing CIPP liners and PVC!

Field of Application

- Opening of laterals and inlet lines

Article-No.	d inch	h inch	Segments	Weight pounds
BL 11448 3/8"UNF	1.6	1.6	18	0.55

linerCUT Pro® 2.0 Ball milling cutter



Materials to be processed

- UV CIPP
- Felt CIPP
- PVC

Note: Only suitable for processing CIPP liners and PVC!

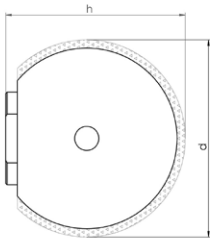
Field of Application

- Opening of laterals and inlet lines

Article-No.	d inch	h inch	Segments	Weight pounds
BL 11447 3/8"UNF	1.2	1.0	16	0.22



D•GRIT Ball milling cutter



Materials to be processed

- UV CIPP
- Felt CIPP
- PVC

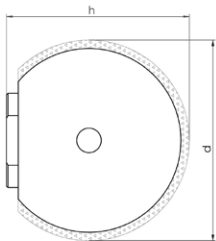
Note: Only suitable for processing CIPP liners and PVC!

Field of Application

- Opening of laterals and inlet lines
- CIPP liner finishing

Article-No.	d inch	h inch	Grit	Weight pounds
70001 3/8"UNF	1.6	1.5	Diamond	0.55

D•GRIT Ball milling cutter



Materials to be processed

- UV CIPP
- Felt CIPP
- PVC

Note: Only suitable for processing CIPP liners and PVC!

Field of Application

- Opening of laterals and inlet lines
- CIPP liner finishing

Article-No.	d inch	h inch	Grit	Weight pounds
70003 3/8"UNF	1.2	1.2	Diamond	0.33



D•GRIT Half-ball milling cutter



Materials to be processed

- UV CIPP
- Felt CIPP
- PVC

Note: Only suitable for processing CIPP liners and PVC!

Field of Application

- Opening of laterals and inlet lines
- CIPP liner finishing

Article-No.	d inch	h inch	Grit	Weight pounds
70008 3/8"UNF	2.0	1.0	Diamond	0.22

D•GRIT Half-ball milling cutter



Materials to be processed

- UV CIPP
- Felt CIPP
- PVC

Note: Only suitable for processing CIPP liners and PVC!

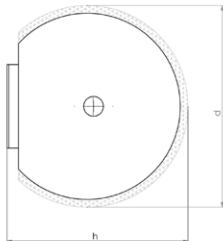
Field of Application

- Opening of laterals and inlet lines
- CIPP liner finishing

Article-No.	d inch	h inch	Grit	Weight pounds
70009 3/8"UNF	1.6	0.8	Diamond	0.13



HM•LINE Ball milling cutter



Materials to be processed

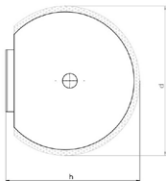
- UV CIPP
- PVC
- Roots
- Felt CIPP

Field of Application

- Opening of laterals and inlet lines
- Removal of intruding obstacles
- CIPP liner finishing

Article-No.	d inch	h inch	Grit	Weight pounds
50002 3/8"UNF	1.6	1.7	Carbide	0.66

HM•LINE Ball milling cutter



Materials to be processed

- UV CIPP
- PVC
- Roots
- Felt CIPP

Field of Application

- Opening of laterals and inlet lines
- Removal of intruding obstacles
- CIPP liner finishing

Article-No.	d inch	h inch	Grit	Weight pounds
50005 3/8"UNF	1.2	1.3	Carbide	0.33



HM•LINE Half-ball milling cutter



Materials to be processed

- UV CIPP
- PVC
- Roots
- Felt CIPP

Field of Application

- Opening of laterals and inlet lines
- Removal of intruding obstacles
- CIPP liner finishing

Article-No.	d inch	h inch	Grit	Weight pounds
50004 3/8"UNF	1.6	1.2	Carbide	0.33

HM•LINE Half-ball milling cutter



Materials to be processed

- UV CIPP
- PVC
- Roots
- Felt CIPP

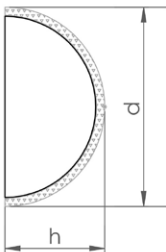
Field of Application

- Opening of laterals and inlet lines
- Removal of intruding obstacles
- CIPP liner finishing

Article-No.	d inch	h inch	Weight pounds
50009 3/8"UNF	1.2	0.8	0.19



HM•LINE Half-ball milling cutter



Materials to be processed

- UV CIPP
- PVC
- Roots
- Felt CIPP

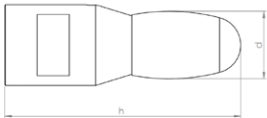
Field of Application

- Opening of laterals and inlet lines
- Removal of intruding obstacles
- CIPP liner finishing

Article-No.	d inch	h inch	Grit	Weight pounds
51001 3/8"UNF	2.0	1.0	Carbide	0.22



VHM•LINE oval shaped



Materials to be processed

- Cast Iron
- Steel

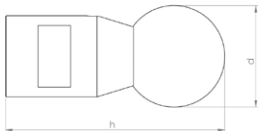
Note: Use on concrete or vitrified clay will destroy the cutting elements!

Field of Application

- Removal of intruding obstacles

Article-No.	d inch	h inch	Segments	Weight pounds
60001 3/8"UNF	0.6	2.2	1	0.33

VHM•LINE ball shaped



Materials to be processed

- Cast Iron
- Steel

Note: Use on concrete or vitrified clay will destroy the cutting elements!

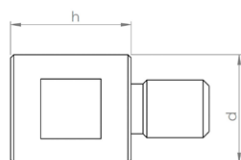
Field of Application

- Removal of intruding obstacles

Article-No.	d inch	h inch	Segments	Weight pounds
60002 3/8"UNF	1.0	2.2	1	0.33



Extension 20 mm



Description

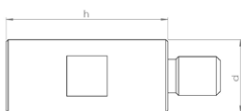
CNC fabricated tool extension for increased working radius of robot arm.

Specification

Stainless steel

Article-No.	d inch	h inch	Weight pounds
90138 3/8"UNF	0.7	0.8	0.11

Extension 40 mm



Description

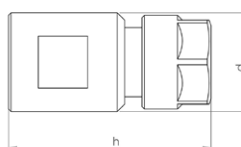
CNC fabricated tool extension for increased working radius of robot arm.

Specification

Stainless steel

Article-No.	d inch	h inch	Weight pounds
90139 3/8"UNF	0.7	1.6	0.15

Adapter for mounting commercially available shank tools Ø 1/4"



Description

CNC fabricated collet chuck adapter for mounting commercially available shank tools.
e.g. burrs, brushes, flap grinders etc...
Mounting: Shank Ø 1/4"

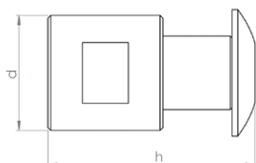
Specification

Stainless steel

Article-No.	d inch	h inch	Weight pounds
90172 3/8"UNF	0.8	1.6	0.15



Adapter for mounting of 2 wheel brushes



Description

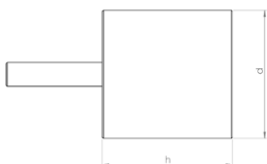
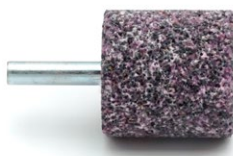
CNC fabricated adapter for mounting of 2 wheel brushes.
Mounting shaft Ø 12,7 mm
includes locking screw and cupped washer
NOTE: This adapter cannot be used to mount a single brush!

Specification

Stainless steel

Article-No.	d inch	h inch	Weight pounds
90140 3/8"UNF	0.8	1.3	0.11

Mounted point-cylindrical



Description

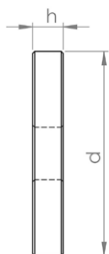
Corundum mounted point, for working on steel and cast iron.
NOTE: Only useable with adapter!

Specification

Corundum

Article-No.	d inch	h inch	Weight pounds
81002	1.3	1.3	0.17

Wheel brush Ø 45 mm



Description

Premium rotary wire brushes for finishing work on CIPP liners and PVC.
Mounting hole Ø 12,7 mm
NOTE: May be used only with matching adapter! Packing unit: 2 pieces

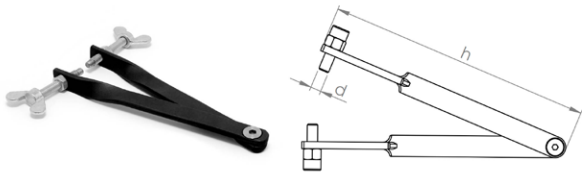
Specification

Wire thickness: Ø 0,3 mm

Article-No.	d inch	h inch	Weight pounds
80025	1.8	0.3	0.11



Pin-tipped tongs for safe tool changeover



Description

The tongs are fitted with pin (with adjustable gripping depth) witch are inserted into the gripping holes of the milling tools, permitting safe changeover without risking damage to the tooling.

Specification

Steel

Article-No.	d inch	h inch	Weight pounds
92002	0.2	5.9	0.27

Open-end wrench 17 mm



Description

The flat design of the wrench is particularly well suited for milling tools with low base height.

Specification

Steel

Article-No.	d inch	h inch	Weight pounds
92001 SW17	0.7	0.1	0.17