

PRODUCT PROGRAM

Product catalog for
robots of the brand

Rausch Rehab*

* These are third party brands that are in no way associated with SDT Technolgy GmbH

PRODUCT PROGRAM 2025

TABLE OF CONTENTS

Robot type	Page
------------	------

Rausch Rehab* RRC1*	3
---------------------	---






The tables of contents in this catalog are interactive. A click will lead you directly to the desired target page.



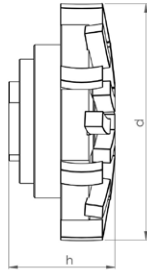
	<p>Premium Diamond Tools for High-Performance Material Removal and Long Service Life</p> <p>Materials to be processed</p> <ul style="list-style-type: none"> Reinforced Concrete Concrete Deposits / Fouling Cast Iron Vitrified Clay <p>Page 5</p>
	<p>Field-Proven Standard Diamond Tools with Outstanding Value for Purchase Investment</p> <p>Materials to be processed</p> <ul style="list-style-type: none"> Reinforced Concrete Concrete Deposits / Fouling Cast Iron Vitrified Clay <p>Page 14</p>
	<p>High-Tech Milling Tools made of PCD with Unbeatable Cutting and Stock Removal Performance for Almost Every Material</p> <p>Materials to be processed</p> <ul style="list-style-type: none"> Concrete UV CIPP Deposits / Fouling Roots PVC Vitrified Clay Felt CIPP <p>Page 17</p>
	<p>Absolutely Smooth-Running and Precise PCD Cutting Tools for Opening CIPP - Optimized for UV CIPP -</p> <p>Materials to be processed</p> <ul style="list-style-type: none"> UV CIPP PVC Felt CIPP <p>Page 24</p>
	<p>Absolutely Smooth-Running and Precise PCD Cutting Tools for Opening CIPP - All Kinds of CIPP and PVC -</p> <p>Materials to be processed</p> <ul style="list-style-type: none"> UV CIPP PVC Felt CIPP <p>Page 28</p>
	<p>Milling Tools made of Irregularly Arranged PCD Cutting Edges with an Extremely Efficient Cutting Performance</p> <p>Materials to be processed</p> <ul style="list-style-type: none"> UV CIPP Roots PVC Felt CIPP <p>Page 30</p>
	<p>Milling Tools with Diamond Granules for Opening CIPP - Optimal for UV CIPP and Lined Cast Iron Pipes -</p> <p>Materials to be processed</p> <ul style="list-style-type: none"> UV CIPP PVC Felt CIPP <p>Page 33</p>



<p>HM•LINE</p> 	<p>Cost-Efficient Milling Tools with Carbide Granulate Tipping for Opening and Reworking CIPP</p> <p>Materials to be processed</p> <ul style="list-style-type: none"> • UV CIPP • Roots • PVC • Felt CIPP <p>Page 35</p>
<p>VHM•LINE</p> 	<p>Special Milling Tools for Processing Steel and Cast Iron</p> <p>Materials to be processed</p> <ul style="list-style-type: none"> • Cast Iron • Steel <p>Page 37</p>
	<p>Functional Accessories</p> <p>High-quality brushes, adapters, extensions, etc.</p> <p>Page 38</p>



Mushroom-head milling cutter spring-mounted



Materials to be processed

- Reinforced Concrete
- Concrete
- Deposits / Fouling
- Cast Iron
- Vitrified Clay

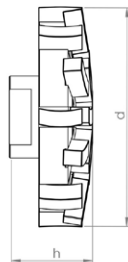
Field of Application

- Removal of intruding laterals
- Surface grinding and milling
- Removal of intruding obstacles
- Milling of offset socket transitions

Article-No.	Pipe Ø inch	d inch	h inch	Segments	Weight pounds
20044 P M14	8 - 12	3.5	1.6	21	1.54
20045 P M14	12 - 18	3.5	1.6	21	1.54
20046 P M14	18 - 24	3.5	1.6	21	1.54



Mushroom-head milling cutter machined for minimum runout



Materials to be processed

- Reinforced Concrete
- Concrete
- Deposits / Fouling
- Cast Iron
- Vitrified Clay

Field of Application

- Removal of intruding laterals
- Surface grinding and milling
- Milling of offset socket transitions

Article-No.	Pipe Ø inch	d inch	h inch	Segments	Weight pounds
20006 P M14	8 - 12	3.1	1.2	21	0.99
20007 P M14	12 - 18	3.1	1.2	21	0.99
20008 P M14	18 - 24	3.1	1.2	21	0.99



Mushroom-head milling cutter machined for minimum runout



Materials to be processed

- Reinforced Concrete
- Concrete
- Deposits / Fouling
- Cast Iron
- Vitrified Clay

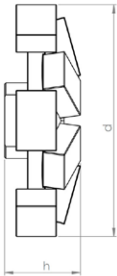
Field of Application

- Removal of intruding laterals
- Surface grinding and milling
- Milling of offset socket transitions

Article-No.	Pipe Ø inch	d inch	h inch	Segments	Weight pounds
20024 P M14	8 - 12	2.8	1.2	18	0.77
20025 P M14	12 - 18	2.8	1.2	18	0.77
20026 P M14	18 - 24	2.8	1.2	18	0.77



Mushroom-head milling cutter machined for minimum runout



Materials to be processed

- Reinforced Concrete
- Concrete
- Deposits / Fouling
- Cast Iron
- Vitrified Clay

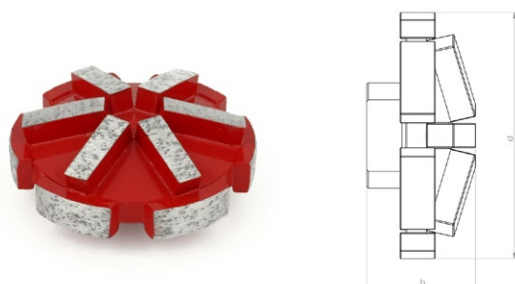
Field of Application

- Removal of intruding laterals
- Surface grinding and milling
- Milling of offset socket transitions

Article-No.	d inch	h inch	Segments	Weight pounds
20049 P M14	3.8	1.2	12	1.65



Mushroom-head milling cutter machined for minimum runout



Materials to be processed

- Reinforced Concrete
- Concrete
- Deposits / Fouling
- Cast Iron
- Vitrified Clay

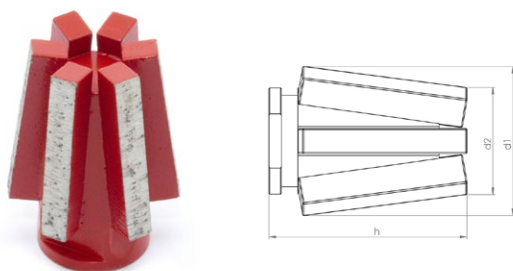
Field of Application

- Removal of intruding laterals
- Surface grinding and milling
- Milling of offset socket transitions

Article-No.	d inch	h inch	Segments	Weight pounds
20050 P M14	2.8	1.2	12	0.77



Tapered milling cutter machined for minimum runout



Materials to be processed

- Reinforced Concrete
- Concrete
- Cast Iron
- Vitrified Clay

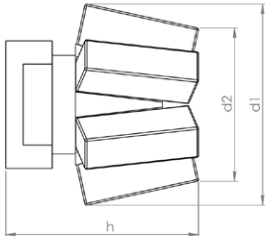
Field of Application

- Preparatory milling of laterals
- Removal of intruding laterals

Article-No.	d1 inch	d2 inch	h inch	Segments	Weight pounds
20013 P M14	1.5	1.1	2.1	6	0.33



Tapered milling cutter machined for minimum runout



Materials to be processed

- Reinforced Concrete
- Concrete
- Cast Iron
- Vitrified Clay

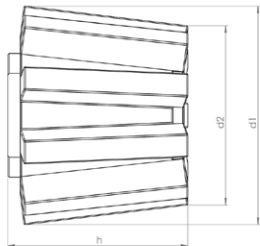
Field of Application

- Preparatory milling of laterals
- Removal of intruding laterals

Article-No.	d1 inch	d2 inch	h inch	Segments	Weight pounds
20027 P M14	1.4	1.1	1.3	6	0.22



Tapered milling cutter machined for minimum runout



Materials to be processed

- Reinforced Concrete
- Concrete
- Cast Iron
- Vitrified Clay

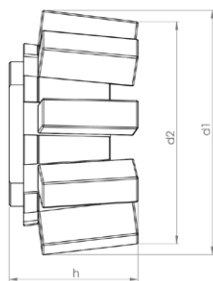
Field of Application

- Preparatory milling of laterals
- Removal of intruding laterals

Article-No.	d1 inch	d2 inch	h inch	Segments	Weight pounds
20004 P M14	2.0	1.7	1.6	9	0.66



Tapered milling cutter machined for minimum runout



Materials to be processed

- Reinforced Concrete
- Concrete
- Cast Iron
- Vitrified Clay

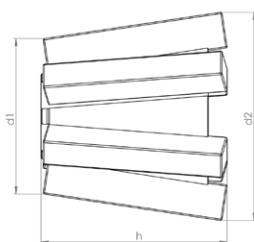
Field of Application

- Preparatory milling of laterals
- Removal of intruding laterals

Article-No.	d1 inch	d2 inch	h inch	Segments	Weight pounds
20001 P M14	2.0	1.8	1.0	9	0.44



V-shape milling cutter machined for minimum runout



Materials to be processed

- Reinforced Concrete
- Concrete
- Cast Iron
- Vitrified Clay

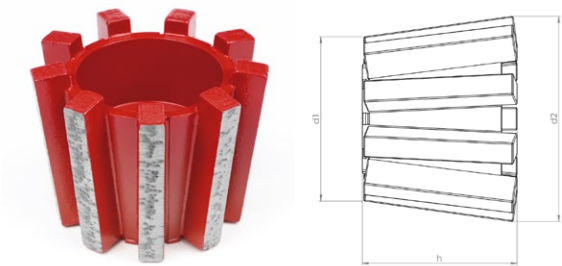
Field of Application

- Preparatory milling of laterals
- Removal of intruding laterals

Article-No.	d1 inch	d2 inch	h inch	Segments	Weight pounds
20043 P M14	1.4	1.8	1.7	6	0.33



V-shape milling cutter machined for minimum runout



Materials to be processed

- Reinforced Concrete
- Concrete
- Cast Iron
- Vitrified Clay

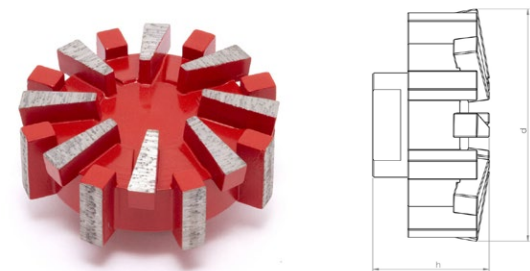
Field of Application

- Preparatory milling of laterals
- Removal of intruding laterals

Article-No.	d1 inch	d2 inch	h inch	Segments	Weight pounds
20039 P M14	1.7	2.0	1.7	9	0.66



Inlet milling cutter machined for minimum runout



Materials to be processed

- Reinforced Concrete
- Concrete
- Cast Iron
- Vitrified Clay

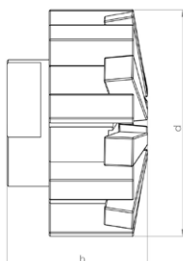
Field of Application

- Preparatory milling of laterals
- Removal of intruding laterals

Article-No.	d inch	h inch	Segments	Weight pounds
20015 P M14	2.7	1.3	16	0.88



Inlet milling cutter machined for minimum runout



Materials to be processed

- Reinforced Concrete
- Concrete
- Cast Iron
- Vitrified Clay

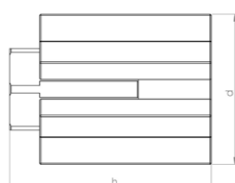
Field of Application

- Preparatory milling of laterals
- Removal of intruding laterals

Article-No.	d inch	h inch	Segments	Weight pounds
20047 P M14	2.2	1.4	16	0.66



Finger milling cutter machined for minimum runout



Materials to be processed

- Reinforced Concrete
- Concrete
- Cast Iron
- Vitrified Clay

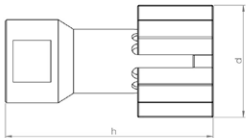
Field of Application

- Preparatory milling of cracks and sockets

Article-No.	d inch	h inch	Segments	Weight pounds
20048 P M14	1.4	2.0	7	0.44



Finger milling cutter machined for minimum runout



Materials to be processed

- Reinforced Concrete
- Concrete
- Cast Iron
- Vitrified Clay

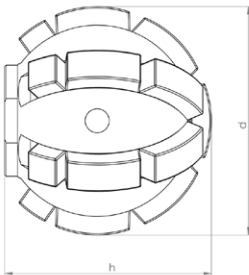
Field of Application

- Preparatory milling of cracks and sockets

Article-No.	d inch	h inch	Segments	Weight pounds
20003 P M14	1.2	2.2	5	0.22



Ball milling cutter



Materials to be processed

- Reinforced Concrete
- Concrete
- Deposits / Fouling
- Cast Iron
- Vitrified Clay

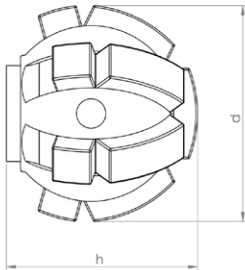
Field of Application

- Preparatory milling of laterals
- Removal of intruding laterals
- Removal of intruding obstacles

Article-No.	d inch	h inch	Segments	Weight pounds
20020 P M14	2.0	1.8	19	0.66



Ball milling cutter



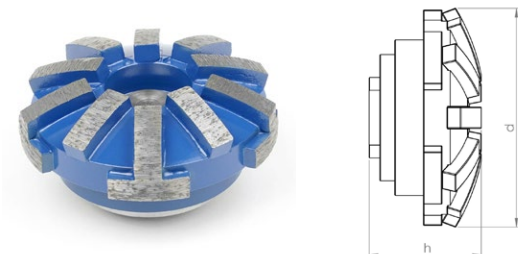
Materials to be processed

- Reinforced Concrete
- Concrete
- Deposits / Fouling
- Cast Iron
- Vitrified Clay

Field of Application

- Preparatory milling of laterals
- Removal of intruding laterals
- Removal of intruding obstacles

Article-No.	d inch	h inch	Segments	Weight pounds
20021 P M14	1.6	1.5	13	0.44


N•TEC II® Mushroom-head milling cutter spring-mounted

Materials to be processed

- Reinforced Concrete
- Concrete
- Deposits / Fouling
- Cast Iron
- Vitrified Clay

Field of Application

- Removal of intruding laterals
- Surface grinding and milling
- Removal of intruding obstacles
- Milling of offset socket transitions

Article-No.	Pipe Ø inch	d inch	h inch	Segments	Weight pounds
20036 M14	8 - 12	3.1	1.7	15	1.65
20037 M14	12 - 18	3.1	1.7	15	1.65
20038 M14	18 - 24	3.1	1.7	15	1.65

Note: Milling tools in other segment hardnesses are available on request.

N•TEC II® Mushroom-head milling cutter

Materials to be processed

- Reinforced Concrete
- Concrete
- Deposits / Fouling
- Cast Iron
- Vitrified Clay

Field of Application

- Removal of intruding laterals
- Surface grinding and milling
- Milling of offset socket transitions

Article-No.	Pipe Ø inch	d inch	h inch	Segments	Weight pounds
20031 M14	8 - 12	2.8	1.2	15	0.77
20032 M14	12 - 18	2.8	1.2	15	0.77
20033 M14	18 - 24	2.8	1.2	15	0.77

Note: Milling tools in other segment hardnesses are available on request.


N•TEC II® Mushroom-head milling cutter

Materials to be processed

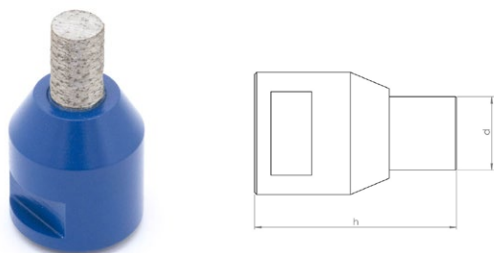
- Reinforced Concrete
- Concrete
- Deposits / Fouling
- Cast Iron
- Vitrified Clay

Field of Application

- Removal of intruding laterals
- Surface grinding and milling
- Milling of offset socket transitions

Article-No.	Pipe Ø inch	d inch	h inch	Segments	Weight pounds
21006 M14	8 - 12	2.8	1.2	10	0.66
21007 M14	12 - 18	2.8	1.2	10	0.66
21008 M14	18 - 24	2.8	1.2	10	0.66

Note: Milling tools in other segment hardnesses are available on request.

N•TEC II® Slot milling cutter

Materials to be processed

- Reinforced Concrete
- Concrete
- Cast Iron
- Vitrified Clay

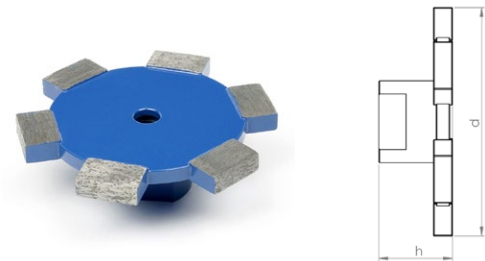
Field of Application

- Preparatory milling of cracks and sockets

Article-No.	d inch	h inch	Segments	Weight pounds
20009 M14	0.7	2.0	1	0.22



N•TEC II® Disk milling cutter



Materials to be processed

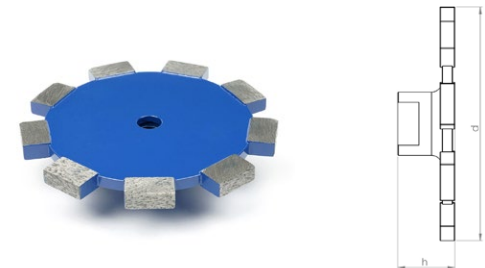
- Reinforced Concrete
- Concrete
- Vitrified Clay

Field of Application

- Milling of circumferential slots on laterals

Article-No.	d inch	h inch	Segments	Weight pounds
20041 M14	3.3	1.1	6	0.66

N•TEC II® Disk milling cutter



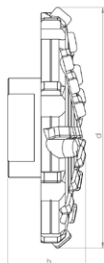
Materials to be processed

- Reinforced Concrete
- Concrete
- Vitrified Clay

Field of Application

- Milling of circumferential slots on laterals

Article-No.	d inch	h inch	Segments	Weight pounds
20042 M14	4.3	1.1	9	0.99


BLACK-LINE Mushroom-head milling cutter

Materials to be processed

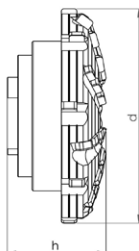
- Concrete
- Deposits / Fouling
- UV CIPP
- Roots
- PVC
- Vitrified Clay
- Felt CIPP

Note: Use on steel-reinforced concrete will destroy the cutting elements!

Field of Application

- Surface milling
- Removal of intruding obstacles
- Milling of offset socket transitions

Article-No.	Pipe Ø inch	d inch	h inch	Segments	Weight pounds
BL 11426 M14	8 - 18	2.5	1.0	28	0.44
BL 11401 M14	12 - 24	3.0	1.1	32	0.55

BLACK-LINE Mushroom-head milling cutter spring-mounted

Materials to be processed

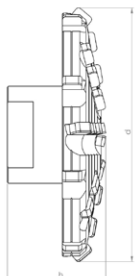
- Concrete
- Deposits / Fouling
- UV CIPP
- Roots
- PVC
- Vitrified Clay
- Felt CIPP

Note: Use on steel-reinforced concrete will destroy the cutting elements!

Field of Application

- Surface milling
- Removal of intruding obstacles
- Milling of offset socket transitions

Article-No.	Pipe Ø inch	d inch	h inch	Segments	Weight pounds
BL 11458 M14	8 - 12	3.1	1.5	32	1.54
BL 11459 M14	12 - 18	3.1	1.5	32	1.54
BL 11460 M14	18 - 24	3.1	1.5	32	1.54


BLACK-LINE Mushroom-head milling cutter center cutting

Materials to be processed

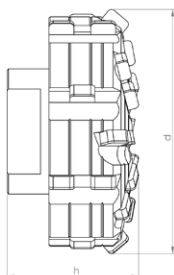
- Concrete
- Deposits / Fouling
- UV CIPP
- Roots
- PVC
- Vitrified Clay
- Felt CIPP

Note: Use on steel-reinforced concrete will destroy the cutting elements!

Field of Application

- Frontal milling
- Surface milling
- Removal of intruding obstacles
- Milling of offset socket transitions

Article-No.	Pipe Ø inch	d inch	h inch	Segments	Weight pounds
BL 11427 M14	8 - 18	2.6	1.1	30	0.44
BL 11402 M14	12 - 24	3.0	1.3	34	0.66

BLACK-LINE Inlet milling cutter

Materials to be processed

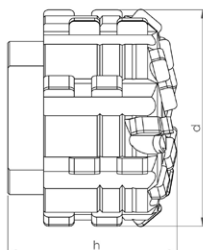
- Concrete
- Deposits / Fouling
- UV CIPP
- Roots
- PVC
- Vitrified Clay
- Felt CIPP

Note: Use on steel-reinforced concrete will destroy the cutting elements!

Field of Application

- Opening of laterals and inlet lines
- Preparatory milling of laterals
- Removal of intruding laterals
- Removal of intruding obstacles

Article-No.	d inch	h inch	Segments	Weight pounds
BL 11409 M14	2.2	1.2	28	0.77


BLACK-LINE Inlet milling cutter

Materials to be processed

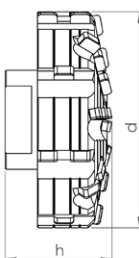
- Concrete
- Deposits / Fouling
- UV CIPP
- Roots
- PVC
- Vitrified Clay
- Felt CIPP

Note: Use on steel-reinforced concrete will destroy the cutting elements!

Field of Application

- Opening of laterals and inlet lines
- Preparatory milling of laterals
- Removal of intruding laterals
- Removal of intruding obstacles

Article-No.	d inch	h inch	Segments	Weight pounds
BL 11451 M14	1.8	1.3	32	0.44

BLACK-LINE Inlet milling cutter center cutting

Materials to be processed

- Concrete
- Deposits / Fouling
- UV CIPP
- Roots
- PVC
- Vitrified Clay
- Felt CIPP

Note: Use on steel-reinforced concrete will destroy the cutting elements!

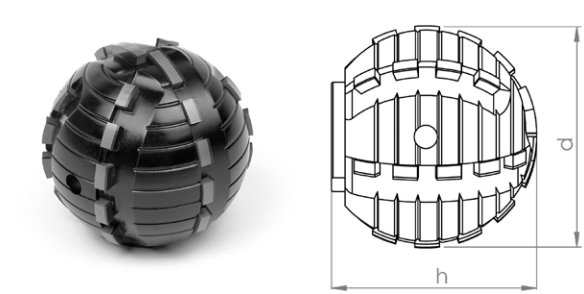
Field of Application

- Opening of laterals and inlet lines
- Preparatory milling of laterals
- Removal of intruding laterals
- Frontal milling
- Surface milling
- Removal of intruding obstacles

Article-No.	d inch	h inch	Segments	Weight pounds
BL 11452 M14	2.8	1.3	34	0.88



BLACK-LINE Ball milling cutter



Materials to be processed

- UV CIPP
- PVC
- Roots
- Felt CIPP

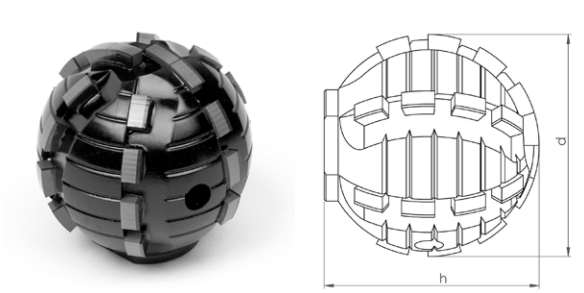
Note: Only suitable for processing CIPP liners and PVC and for cutting roots!

Field of Application

- Opening of laterals and inlet lines
- Removal of intruding obstacles

Article-No.	d inch	h inch	Segments	Weight pounds
BL 11410 M14	2.0	1.8	30	0.88

BLACK-LINE Ball milling cutter



Materials to be processed

- UV CIPP
- PVC
- Roots
- Felt CIPP

Note: Only suitable for processing CIPP liners and PVC and for cutting roots!

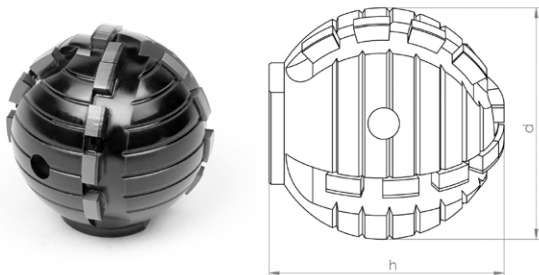
Field of Application

- Opening of laterals and inlet lines
- Removal of intruding obstacles

Article-No.	d inch	h inch	Segments	Weight pounds
BL 11446 M14	1.6	1.7	26	0.55



BLACK•LINE Ball milling cutter



Materials to be processed

- UV CIPP
- PVC
- Roots
- Felt CIPP

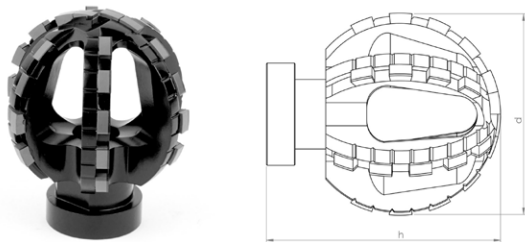
Note: Only suitable for processing CIPP liners and PVC and for cutting roots!

Field of Application

- Opening of laterals and inlet lines
- Removal of intruding obstacles

Article-No.	d inch	h inch	Segments	Weight pounds
BL 11414 M14	1.6	1.7	18	0.55

BLACK•LINE Ball milling cutter Type ProView®



Materials to be processed

- UV CIPP
- PVC
- Roots
- Felt CIPP

Note: Only suitable for processing CIPP liners and PVC and for cutting roots!

Field of Application

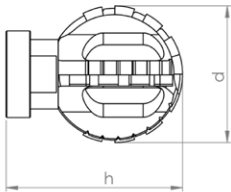
- Opening of laterals and inlet lines
- Removal of intruding obstacles

Article-No.	d inch	h inch	Segments	Weight pounds
BL 11116 M14	2.0	2.2	30	0.44

* These are third party brands that are in no way associated with SDT Technolgy GmbH



BLACK-LINE Ball milling cutter Type ProView®



Materials to be processed

- UV CIPP
- PVC
- Roots
- Felt CIPP

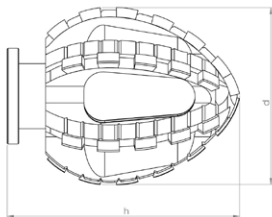
Note: Only suitable for processing CIPP liners and PVC and for cutting roots!

Field of Application

- Opening of laterals and inlet lines
- Removal of intruding obstacles

Article-No.	d inch	h inch	Segments	Weight pounds
BL 11117 M14	1.6	2.0	18	0.33

BLACK-LINE Double-cone milling cutter Type ProView®



Materials to be processed

- UV CIPP
- PVC
- Roots
- Felt CIPP

Note: Only suitable for processing CIPP liners and PVC and for cutting roots!

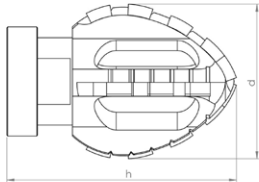
Field of Application

- Opening of laterals and inlet lines
- Removal of intruding obstacles

Article-No.	d inch	h inch	Segments	Weight pounds
BL 11113 M14	1.8	2.4	34	0.35



BLACK•LINE Double-cone milling cutter Type ProView®



Materials to be processed

- UV CIPP
- PVC
- Roots
- Felt CIPP

Note: Only suitable for processing CIPP liners and PVC and for cutting roots!

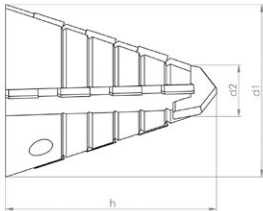
Field of Application

- Opening of laterals and inlet lines
- Removal of intruding obstacles

Article-No.	d inch	h inch	Segments	Weight pounds
BL 11118 M14	1.4	2.1	16	0.33



linerCUT Pro® Tapered milling cutter with tungsten carbide tip



Materials to be processed

- UV CIPP
- Felt CIPP
- PVC

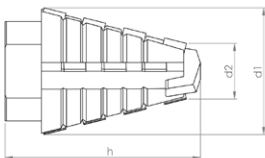
Note: Only suitable for processing CIPP liners and PVC!

Field of Application

- Opening of laterals and inlet lines

Article-No.	d1 inch	d2 inch	h inch	Segments	Weight pounds
BL 11463 M14	1.6	0.7	1.9	14	0.3

linerCUT Pro® Tapered milling cutter with tungsten carbide tip



Materials to be processed

- UV CIPP
- Felt CIPP
- PVC

Note: Only suitable for processing CIPP liners and PVC!

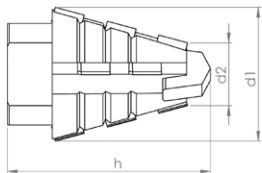
Field of Application

- Opening of laterals and inlet lines

Article-No.	d1 inch	d2 inch	h inch	Segments	Weight pounds
BL 11437 M14	1.1	0.7	1.8	14	0.17



linerCUT Pro® Tapered milling cutter with tungsten carbide tip



Materials to be processed

- UV CIPP
- Felt CIPP
- PVC

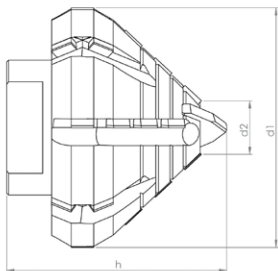
Note: Only suitable for processing CIPP liners and PVC!

Field of Application

- Opening of laterals and inlet lines

Article-No.	d1 inch	d2 inch	h inch	Segments	Weight pounds
BL 11438 M14	1.2	0.7	1.4	10	0.13

linerCUT Pro® Taper/cylinder milling cutter with tungsten carbide tip



Materials to be processed

- UV CIPP
- Felt CIPP
- PVC

Note: Only suitable for processing CIPP liners and PVC!

Field of Application

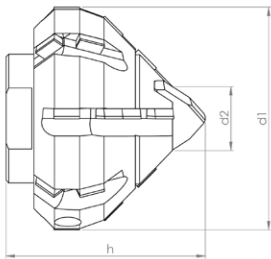
- Opening of laterals and inlet lines

Article-No.	d1 inch	d2 inch	h inch	Segments	Weight pounds
BL 11441 M14	2.2	0.8	1.8	24	0.66

* These are third party brands that are in no way associated with SDT Technolgy GmbH



linerCUT Pro® Taper/cylinder milling cutter with tungsten carbide tip



Materials to be processed

- UV CIPP
- Felt CIPP
- PVC

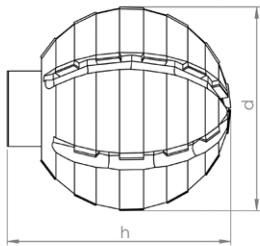
Note: Only suitable for processing CIPP liners and PVC!

Field of Application

- Opening of laterals and inlet lines

Article-No.	d1 inch	d2 inch	h inch	Segments	Weight pounds
BL 11439 M14	1.8	0.8	1.6	22	0.44

linerCUT Pro® Ball milling cutter



Materials to be processed

- UV CIPP
- Felt CIPP
- PVC

Note: Only suitable for processing CIPP liners and PVC!

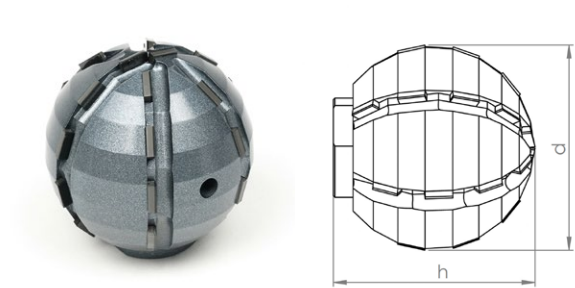
Field of Application

- Opening of laterals and inlet lines

Article-No.	d inch	h inch	Segments	Weight pounds
BL 11445 M14	2.4	2.6	30	1.76



linerCUT Pro® Ball milling cutter



Materials to be processed

- UV CIPP
- Felt CIPP
- PVC

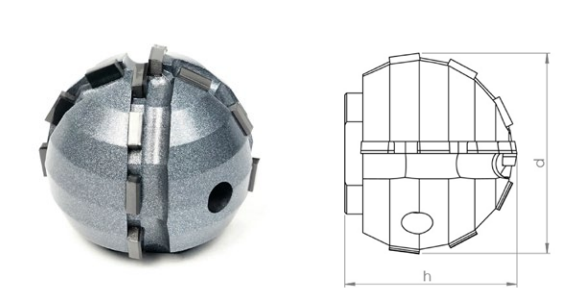
Note: Only suitable for processing CIPP liners and PVC!

Field of Application

- Opening of laterals and inlet lines

Article-No.	d inch	h inch	Segments	Weight pounds
BL 11444 M14	2.0	2.2	24	1.1

linerCUT Pro® Ball milling cutter



Materials to be processed

- UV CIPP
- Felt CIPP
- PVC

Note: Only suitable for processing CIPP liners and PVC!

Field of Application

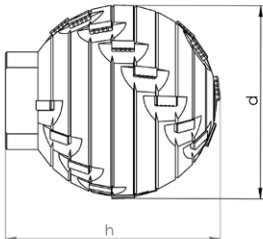
- Opening of laterals and inlet lines

Article-No.	d inch	h inch	Segments	Weight pounds
BL 11443 M14	1.6	1.4	12	0.44

* These are third party brands that are in no way associated with SDT Technolgy GmbH



linerCUT Pro® 2.0 Ball milling cutter



Materials to be processed

- UV CIPP
- Felt CIPP
- PVC

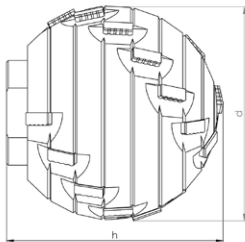
Note: Only suitable for processing CIPP liners and PVC!

Field of Application

- Opening of laterals and inlet lines

Article-No.	d inch	h inch	Segments	Weight pounds
BL 11450 M14	2.4	2.6	28	1.87

linerCUT Pro® 2.0 Ball milling cutter



Materials to be processed

- UV CIPP
- Felt CIPP
- PVC

Note: Only suitable for processing CIPP liners and PVC!

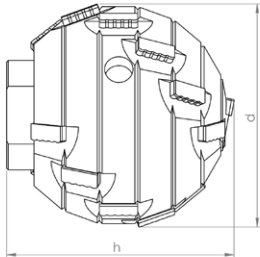
Field of Application

- Opening of laterals and inlet lines

Article-No.	d inch	h inch	Segments	Weight pounds
BL 11449 M14	2.0	2.0	22	1.1



linerCUT Pro® 2.0 Ball milling cutter



Materials to be processed

- UV CIPP
- Felt CIPP
- PVC

Note: Only suitable for processing CIPP liners and PVC!

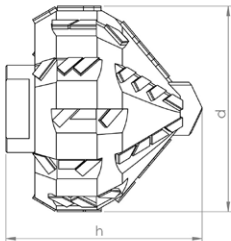
Field of Application

- Opening of laterals and inlet lines

Article-No.	d inch	h inch	Segments	Weight pounds
BL 11448 M14	1.6	1.6	18	0.55



linerCUT Pro® 2.0U Taper/cylinder milling cutter with tungsten carbide tip



Materials to be processed

- UV CIPP
- PVC
- Roots
- Felt CIPP

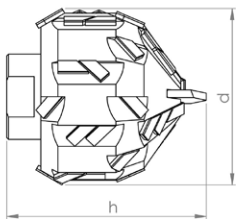
Note: Only suitable for processing CIPP liners and PVC and for cutting roots!

Field of Application

- Opening of laterals and inlet lines
- Removal of intruding obstacles

Article-No.	d inch	h inch	Segments	Weight pounds
BL 11457 M14	2.8	2.4	58	2.64

linerCUT Pro® 2.0U Taper/cylinder milling cutter with tungsten carbide tip



Materials to be processed

- UV CIPP
- PVC
- Roots
- Felt CIPP

Note: Only suitable for processing CIPP liners and PVC and for cutting roots!

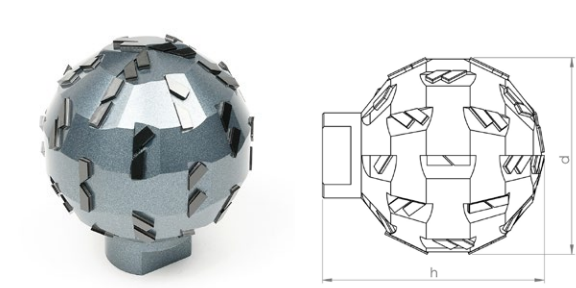
Field of Application

- Opening of laterals and inlet lines
- Removal of intruding obstacles

Article-No.	d inch	h inch	Segments	Weight pounds
BL 11456 M14	2.0	2.4	38	1.32



linerCUT Pro® 2.0U Ball milling cutter



Materials to be processed

- UV CIPP
- PVC
- Roots
- Felt CIPP

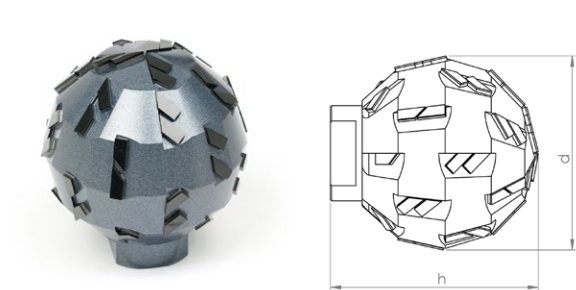
Note: Only suitable for processing CIPP liners and PVC and for cutting roots!

Field of Application

- Opening of laterals and inlet lines
- Removal of intruding obstacles

Article-No.	d inch	h inch	Segments	Weight pounds
BL 11455 M14	2.8	3.0	60	3.08

linerCUT Pro® 2.0U Ball milling cutter



Materials to be processed

- UV CIPP
- PVC
- Roots
- Felt CIPP

Note: Only suitable for processing CIPP liners and PVC and for cutting roots!

Field of Application

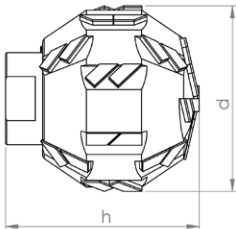
- Opening of laterals and inlet lines
- Removal of intruding obstacles

Article-No.	d inch	h inch	Segments	Weight pounds
BL 11454 M14	2.4	2.6	48	2.64

* These are third party brands that are in no way associated with SDT Technolgy GmbH



linerCUT Pro® 2.0U Ball milling cutter



Materials to be processed

- UV CIPP
- PVC
- Roots
- Felt CIPP

Note: Only suitable for processing CIPP liners and PVC and for cutting roots!

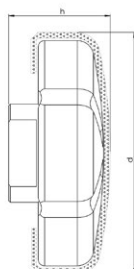
Field of Application

- Opening of laterals and inlet lines
- Removal of intruding obstacles

Article-No.	d inch	h inch	Segments	Weight pounds
BL 11453 M14	2.0	2.2	40	1.1



D•GRIT Inlet milling cutter



Materials to be processed

- UV CIPP
- Felt CIPP
- PVC

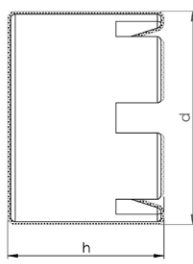
Note: Only suitable for processing CIPP liners and PVC!

Field of Application

- Opening of laterals and inlet lines
- CIPP liner finishing

Article-No.	d inch	h inch	Grit	Weight pounds
70011 M14	2.8	1.2	Diamond	1.1

D•GRIT Crown milling cutter



Materials to be processed

- UV CIPP
- Felt CIPP
- PVC

Note: Only suitable for processing CIPP liners and PVC!

Field of Application

- Opening of laterals and inlet lines
- CIPP liner finishing

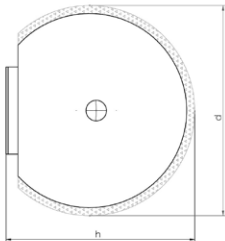
Article-No.	d inch	h inch	Grit	Weight pounds
70006	2.8	2.0	Diamond	1.32

Note: Tool can only be used with matching adapter 90173!



D•GRIT

Ball milling cutter



Materials to be processed

- UV CIPP
- Felt CIPP
- PVC

Note: Only suitable for processing CIPP liners and PVC!

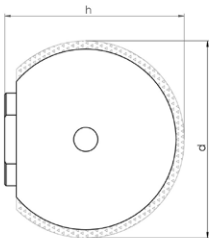
Field of Application

- Opening of laterals and inlet lines
- CIPP liner finishing

Article-No.	d inch	h inch	Grit	Weight pounds
70002 M14	2.0	1.9	Diamond	0.99

D•GRIT

Ball milling cutter



Materials to be processed

- UV CIPP
- Felt CIPP
- PVC

Note: Only suitable for processing CIPP liners and PVC!

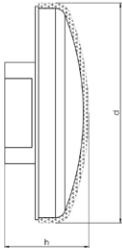
Field of Application

- Opening of laterals and inlet lines
- CIPP liner finishing

Article-No.	d inch	h inch	Grit	Weight pounds
70001 M14	1.6	1.5	Diamond	0.55



HM•LINE Mushroom-head milling cutter



Materials to be processed

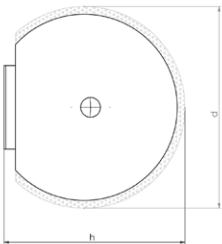
- UV CIPP
- PVC
- Roots
- Felt CIPP

Field of Application

- Removal of intruding obstacles
- CIPP liner finishing

Article-No.	d inch	h inch	Grit	Weight pounds
50003 M14	2.6	1.2	Carbide	0.66

HM•LINE Ball milling cutter



Materials to be processed

- UV CIPP
- PVC
- Roots
- Felt CIPP

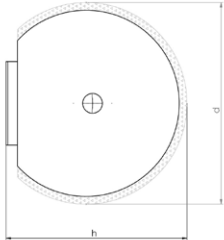
Field of Application

- Opening of laterals and inlet lines
- Removal of intruding obstacles
- CIPP liner finishing

Article-No.	d inch	h inch	Grit	Weight pounds
50001 M14	2.0	2.0	Carbide	1.32



HM•LINE Ball milling cutter



Materials to be processed

- UV CIPP
- PVC
- Roots
- Felt CIPP

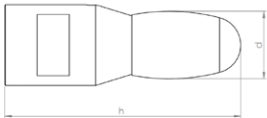
Field of Application

- Opening of laterals and inlet lines
- Removal of intruding obstacles
- CIPP liner finishing

Article-No.	d inch	h inch	Grit	Weight pounds
50002 M14	1.6	1.7	Carbide	0.66



VHM•LINE oval shaped



Materials to be processed

- Cast Iron
- Steel

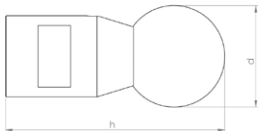
Note: Use on concrete or vitrified clay will destroy the cutting elements!

Field of Application

- Removal of intruding obstacles

Article-No.	d inch	h inch	Segments	Weight pounds
60007 M14	0.6	2.4	1	0.33

VHM•LINE ball shaped



Materials to be processed

- Cast Iron
- Steel

Note: Use on concrete or vitrified clay will destroy the cutting elements!

Field of Application

- Removal of intruding obstacles

Article-No.	d inch	h inch	Segments	Weight pounds
60008 M14	1.0	2.4	1	0.33



Extension 30 mm



Description

CNC fabricated tool extension for increased working radius of robot arm.

Specification

Stainless steel

Article-No.	d inch	h inch	Weight pounds
90120 M14	1.2	1.2	0.33

Extension 40 mm



Description

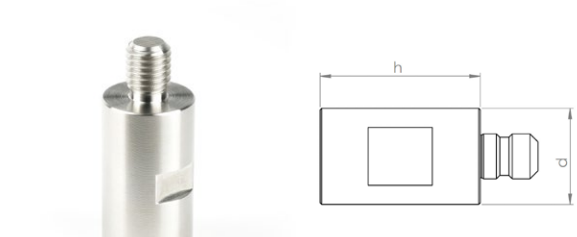
CNC fabricated tool extension for increased working radius of robot arm.

Specification

Stainless steel

Article-No.	d inch	h inch	Weight pounds
90121 M14	1.2	1.6	0.44

Extension 50 mm



Description

CNC fabricated tool extension for increased working radius of robot arm.

Specification

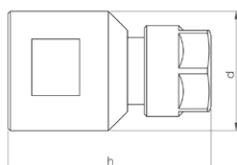
Stainless steel

Article-No.	d inch	h inch	Weight pounds
90122 M14	1.2	2.0	0.55

* These are third party brands that are in no way associated with SDT Technolgy GmbH



Adapter for mounting commercially available shank tools Ø 1/4"



Description

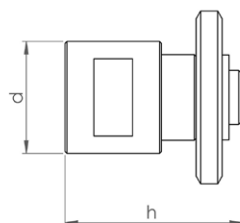
CNC fabricated collet chuck adapter for mounting commercially available shank tools.
e.g. burrs, brushes, flap grinders etc...
Mounting: Shank Ø 1/4"

Specification

Stainless steel

Article-No.	d inch	h inch	Weight pounds
90171 M14	1.2	1.6	0.22

Adapter for mounting of 3 cutting discs



Description

CNC fabricated adapter for mounting of 3 cutting discs.
Mounting shaft Ø 22,2 mm
includes 3 cutting discs and locking disc

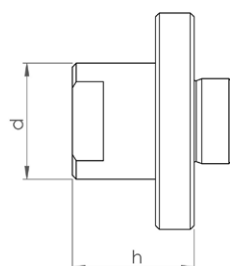
NOTE: This adapter cannot be used to mount a single cutting disc!

Specification

Stainless steel

Article-No.	d inch	h inch	Weight pounds
90168 M14	1.2	1.8	0.44

Adapter for mounting D-GRIT milling tools



Description

CNC fabricated adapter for mounting **D-GRIT** milling tools

NOTE: This adapter is only required for specific D-GRIT milling tools!

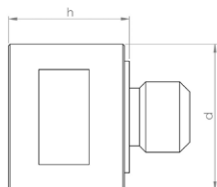
Specification

Stainless steel

Article-No.	d inch	h inch	Weight pounds
90173 M14	2.2	1.3	0.66



Adapter for mounting of brushes and cutting discs



Description

CNC fabricated adapter for mounting of brushes and cutting discs.

Thread: M14 (14 mm O.D.)

Centering ring for cutting disc: Ø 22,2 mm

NOTE: When mounting wheel brushes or cutting discs, a locking disc is also required!

Specification

Stainless steel

Article-No.	d inch	h inch	Weight pounds
90112 M14	1.2	1.0	0.24

Locking disc for mounting of wheel brushes and cutting discs



Description

Thread: M14 (14 mm O.D.)

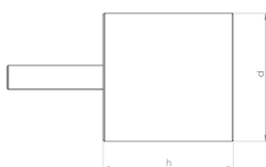
NOTE: Wheel brushes and cutting discs must be mounted using matching adapters!

Specification

Steel, burnished

Article-No.	d inch	h inch	Weight pounds
SP 90110	1.8	0.3	0.15

Mounted point-cylindrical



Description

Corundum mounted point, for working on steel and cast iron.

NOTE: Only useable with adapter!

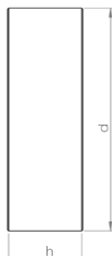
Specification

Corundum

Article-No.	d inch	h inch	Weight pounds
81002	1.3	1.3	0.17



Cup wheel Ø 80 mm



Description

Corundum cup wheel, for working on steel and cast iron.

Mounting hole Ø 22,2 mm

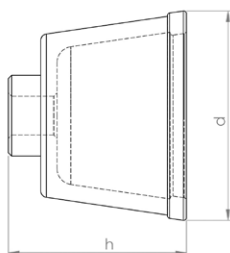
NOTE: May be used only with matching adapter and locking disc!

Specification

Corundum

Article-No.	d inch	h inch	Weight pounds
81003	3.1	1.1	0.44

Cup brush Ø 65 mm



Description

Premium rotary wire brush for finishing work on CIPP liners and PVC.

Mounting hole M14 (14 mm thread O.D.)

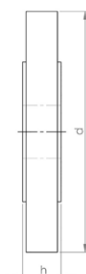
NOTE: May be used only with matching adapter!

Specification

Wire thickness: Ø 0,8 mm

Article-No.	d inch	h inch	Weight pounds
80020	2.6	2.0	0.55

Wheel brush Ø 100 mm



Description

Premium rotary wire brush for finishing work on CIPP liners and PVC.

Mounting hole Ø 22,2 mm

NOTE: May be used only with matching adapter and locking disc!

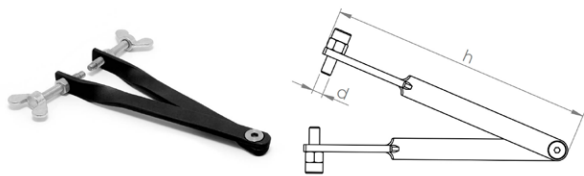
Specification

Wire thickness: Ø 0,5 mm

Article-No.	d inch	h inch	Weight pounds
80018	3.9	0.6	0.44



Pin-tipped tongs for safe tool changeover



Description

The tongs are fitted with pin (with adjustable gripping depth) witch are inserted into the gripping holes of the milling tools, permitting safe changeover without risking damage to the tooling.

Specification

Steel

Article-No.	d inch	h inch	Weight pounds
92002	0.2	5.9	0.27