

The background of the entire page is a large, stylized illustration of interlocking gears. The gears are rendered in a light gray, almost white, color with thin black outlines. They are arranged in a way that suggests a complex mechanical system, with some gears in the foreground and others receding into the background. The overall effect is one of precision and engineering.

PRODUCT PROGRAM

Product catalog for
robots of the brand

Hächler*

PRODUCT PROGRAM 2025



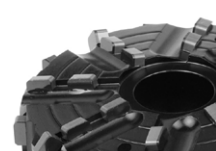





The tables of contents in this catalog are interactive. A click will lead you directly to the desired target page.

TABLE OF CONTENTS

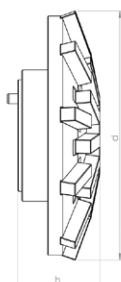
Robot type	Page
Hächler* HF 200*	3
Hächler* HF 130*	25
Hächler* Climbolino E*	59
Hächler* Climb*	79
Hächler* Climbolino*	101



	<p>Premium Diamond Tools for High-Performance Material Removal and Long Service Life</p> <p>Materials to be processed</p> <ul style="list-style-type: none"> Reinforced Concrete Concrete Deposits / Fouling Cast Iron Vitrified Clay <p>Page 4</p>
	<p>Field-Proven Standard Diamond Tools with Outstanding Value for Purchase Investment</p> <p>Materials to be processed</p> <ul style="list-style-type: none"> Reinforced Concrete Concrete Deposits / Fouling Cast Iron Vitrified Clay <p>Page 8</p>
	<p>High-Tech Milling Tools made of PCD with Unbeatable Cutting and Stock Removal Performance for Almost Every Material</p> <p>Materials to be processed</p> <ul style="list-style-type: none"> Concrete UV CIPP Deposits / Fouling Roots PVC Vitrified Clay Felt CIPP <p>Page 12</p>
	<p>Absolutely Smooth-Running and Precise PCD Cutting Tools for Opening CIPP - Optimized for UV CIPP -</p> <p>Materials to be processed</p> <ul style="list-style-type: none"> UV CIPP PVC Felt CIPP <p>Page 16</p>
	<p>Absolutely Smooth-Running and Precise PCD Cutting Tools for Opening CIPP - All Kinds of CIPP and PVC -</p> <p>Materials to be processed</p> <ul style="list-style-type: none"> UV CIPP PVC Felt CIPP <p>Page 19</p>
	<p>Functional Accessories</p> <p>High-quality brushes, adapters, extensions, etc.</p> <p>Page 20</p>



Mushroom-head milling cutter spring-mounted



Materials to be processed

- Reinforced Concrete
- Concrete
- Deposits / Fouling
- Cast Iron
- Vitrified Clay

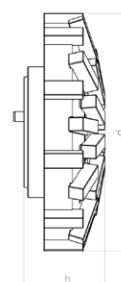
Field of Application

- Surface grinding and milling
- Milling of offset socket transitions

Article-No.	Pipe Ø inch	d inch	h inch	Segments	Weight pounds
42001 P	8	3.9	1.6	20	2.86
42002 P	10	4.7	1.8	20	3.52
42003 P	12	4.7	1.8	20	3.52
42004 P	14 - 16	4.7	1.8	20	3.52
42005 P	18 - 20	4.7	1.8	20	3.52
42006 P	24	4.7	1.8	20	3.52



Mushroom-head milling cutter spring-mounted



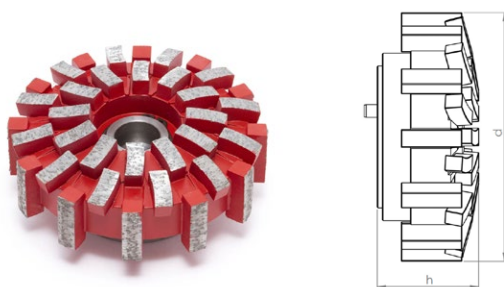
Materials to be processed

- Reinforced Concrete
- Concrete
- Deposits / Fouling
- Cast Iron
- Vitrified Clay

Field of Application

- Removal of intruding laterals
- Surface grinding and milling
- Milling of offset socket transitions

Article-No.	Pipe Ø inch	d inch	h inch	Segments	Weight pounds
45001 P	8	4.3	1.6	30	2.86
45002 P	10	4.7	1.8	30	3.52
45003 P	12	4.7	1.8	30	3.52
45004 P	14 - 16	4.7	1.8	30	3.52
45005 P	18 - 20	4.7	1.8	30	3.52
45006 P	24	4.7	1.8	30	3.52

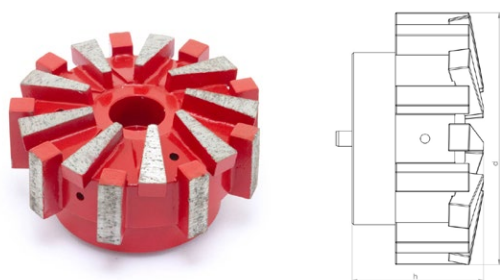
**2-in-1 cutter spring-mounted****Materials to be processed**

- Reinforced Concrete
- Concrete
- Deposits / Fouling
- Cast Iron
- Vitrified Clay

Field of Application

- Preparatory milling of laterals
- Removal of intruding laterals
- Surface grinding and milling
- Milling of offset socket transitions

Article-No.	Pipe Ø inch	d inch	h inch	Segments	Weight pounds
KF 45001 P	8	3.9	1.8	36	2.64
KF 45002 P	10	3.9	1.8	36	2.64
KF 45003 P	12	3.9	1.8	36	2.64
KF 45004 P	14 - 16	3.9	1.8	36	2.64
KF 45005 P	18 - 20	3.9	1.8	36	2.64
KF 45006 P	24	3.9	1.8	36	2.64

**Inlet milling cutter machined for minimum runout****Materials to be processed**

- Reinforced Concrete
- Concrete
- Cast Iron
- Vitrified Clay

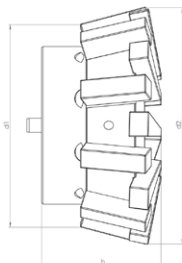
Field of Application

- Preparatory milling of laterals
- Removal of intruding laterals

Article-No.	Pipe Ø inch	d inch	h inch	Segments	Weight pounds
42007 P	10 - 24	3.1	1.7	18	2.2



Inlet milling cutter 15° machined for minimum runout



Materials to be processed

- Reinforced Concrete
- Concrete
- Cast Iron
- Vitrified Clay

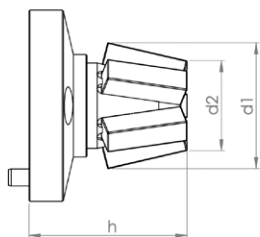
Field of Application

- Preparatory milling of laterals
- Removal of intruding laterals

Article-No.	d1 inch	d2 inch	h inch	Segments	Weight pounds
42032 P	2.8	3.1	1.7	18	1.76



Slot milling cutter



Materials to be processed

- Reinforced Concrete
- Concrete
- Vitrified Clay

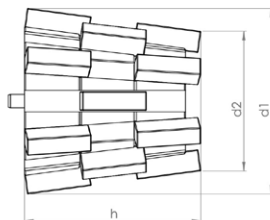
Field of Application

- Preparatory milling of cracks and sockets

Article-No.	Pipe Ø inch	d1 inch	d2 inch	h inch	Segments	Weight pounds
42012 P	8 - 12	1.4	1.1	1.6	5	0.66
42013 P	12 - 18	1.4	1.1	1.8	5	0.66
42021 P	18 - 24	1.4	1.1	2.2	5	0.88



Tapered milling cutter machined for minimum runout



Materials to be processed

- Reinforced Concrete
- Concrete
- Cast Iron
- Vitrified Clay

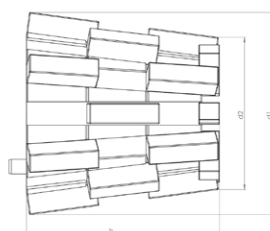
Field of Application

- Preparatory milling of laterals
- Removal of intruding laterals

Article-No.	d1 inch	d2 inch	h inch	Segments	Weight pounds
42010 P	2.8	2.0	2.6	18	2.2



Tapered milling cutter with top segments, machined for minimum runout



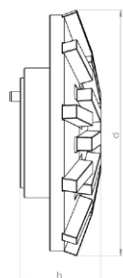
Materials to be processed

- Reinforced Concrete
- Concrete
- Cast Iron
- Vitrified Clay

Field of Application

- Preparatory milling of laterals
- Removal of intruding laterals

Article-No.	d1 inch	d2 inch	h inch	Segments	Weight pounds
42033 P	2.8	2.0	2.6	24	2.2


N•TEC II® Mushroom-head milling cutter spring-mounted

Materials to be processed

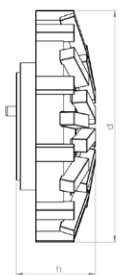
- Reinforced Concrete
- Concrete
- Deposits / Fouling
- Cast Iron
- Vitrified Clay

Field of Application

- Surface grinding and milling
- Milling of offset socket transitions

Article-No.	Pipe Ø inch	d inch	h inch	Segments	Weight pounds
43001	8	3.9	1.6	20	2.86
43002	10	4.7	1.8	20	3.52
43003	12	4.7	1.8	20	3.52
43004	14 - 16	4.7	1.8	20	3.52
43005	18 - 20	4.7	1.8	20	3.52
43006	24	4.7	1.8	20	3.52

Note: Milling tools in other segment hardnesses are available on request.

N•TEC II® Mushroom-head milling cutter spring-mounted

Materials to be processed

- Reinforced Concrete
- Concrete
- Deposits / Fouling
- Cast Iron
- Vitrified Clay

Field of Application

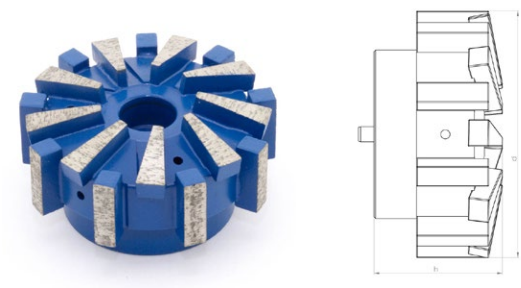
- Removal of intruding laterals
- Surface grinding and milling
- Milling of offset socket transitions

Article-No.	Pipe Ø inch	d inch	h inch	Segments	Weight pounds
46001	8	4.3	1.6	30	2.86
46002	10	4.7	1.8	30	3.52
46003	12	4.7	1.8	30	3.52
46004	14 - 16	4.7	1.8	30	3.52
46005	18 - 20	4.7	1.8	30	3.52
46006	24	4.7	1.8	30	3.52

Note: Milling tools in other segment hardnesses are available on request.



N•TEC II® Inlet milling cutter



Materials to be processed

- Reinforced Concrete
- Concrete
- Cast Iron
- Vitrified Clay

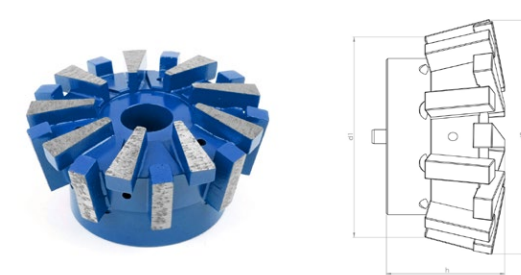
Field of Application

- Preparatory milling of laterals
- Removal of intruding laterals

Article-No.	Pipe Ø inch	d inch	h inch	Segments	Weight pounds
43007	10 - 24	3.1	1.7	18	2.2

Note: Milling tools in other segment hardnesses are available on request.

N•TEC II® Inlet milling cutter 15°



Materials to be processed

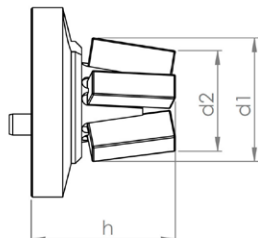
- Reinforced Concrete
- Concrete
- Cast Iron
- Vitrified Clay

Field of Application

- Preparatory milling of laterals
- Removal of intruding laterals

Article-No.	d1 inch	d2 inch	h inch	Segments	Weight pounds
43032	2.8	3.1	1.7	18	1.76

Note: Milling tools in other segment hardnesses are available on request.

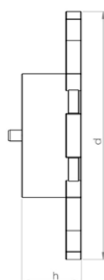

N•TEC II® Slot milling cutter

Materials to be processed

- Reinforced Concrete
- Concrete
- Cast Iron
- Vitrified Clay

Field of Application

- Preparatory milling of cracks and sockets

Article-No.	Pipe Ø inch	d1 inch	d2 inch	h inch	Segments	Weight pounds
44012	8 - 12	1.4	1.1	1.6	5	0.66
44013	12 - 18	1.4	1.1	1.8	5	0.66
44021	18 - 24	1.4	1.1	2.2	5	0.88

N•TEC II® Disk milling cutter

Materials to be processed

- Reinforced Concrete
- Concrete
- Vitrified Clay

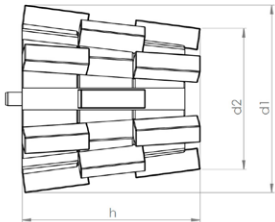
Field of Application

- Milling of circumferential slots on laterals

Article-No.	Pipe Ø inch	d inch	h inch	Segments	Weight pounds
43011	8 - 12	3.3	1.0	6	1.1
43015	12 - 24	4.3	1.0	9	1.54



N•TEC II® Tapered milling cutter



Materials to be processed

- Reinforced Concrete
- Concrete
- Cast Iron
- Vitrified Clay

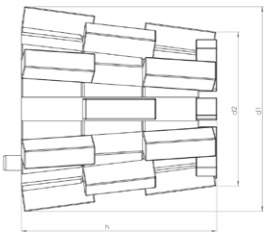
Field of Application

- Preparatory milling of laterals
- Removal of intruding laterals

Article-No.	d1 inch	d2 inch	h inch	Segments	Weight pounds
43010	2.8	2.0	2.6	18	2.2

Note: Milling tools in other segment hardnesses are available on request.

N•TEC II® Tapered milling cutter with top segments



Materials to be processed

- Reinforced Concrete
- Concrete
- Cast Iron
- Vitrified Clay

Field of Application

- Preparatory milling of laterals
- Removal of intruding laterals

Article-No.	d1 inch	d2 inch	h inch	Segments	Weight pounds
43033	2.8	2.0	2.6	24	2.2

Note: Milling tools in other segment hardnesses are available on request.


BLACK-LINE Mushroom-head milling cutter

Materials to be processed

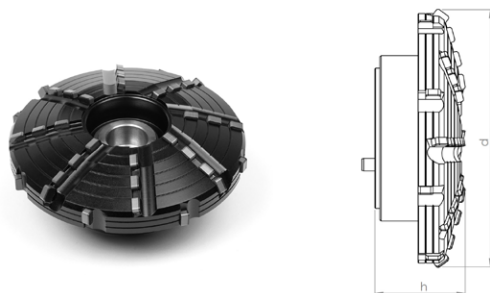
- Concrete
- Deposits / Fouling
- UV CIPP
- Roots
- PVC
- Vitrified Clay
- Felt CIPP

Note: Use on steel-reinforced concrete will destroy the cutting elements!

Field of Application

- Surface milling
- Removal of intruding obstacles
- Milling of offset socket transitions

Article-No.	Pipe Ø inch	d inch	h inch	Segments	Weight pounds
BL 11201	10	4.1	1.2	40	2.09
BL 11202	12	4.1	1.2	40	2.09
BL 11203	14 - 16	4.1	1.2	40	2.09
BL 11204	18 - 20	4.1	1.2	40	2.09
BL 11205	24	4.1	1.2	40	2.09

BLACK-LINE Mushroom-head milling cutter spring-mounted

Materials to be processed

- Concrete
- Deposits / Fouling
- UV CIPP
- Roots
- PVC
- Vitrified Clay
- Felt CIPP

Note: Use on steel-reinforced concrete will destroy the cutting elements!

Field of Application

- Surface milling
- Removal of intruding obstacles
- Milling of offset socket transitions

Article-No.	Pipe Ø inch	d inch	h inch	Segments	Weight pounds
BL 11216	10	3.9	1.4	36	2.42
BL 11217	12	3.9	1.4	36	2.42
BL 11218	14 - 16	3.9	1.4	36	2.42
BL 11219	18 - 20	3.9	1.4	36	2.42
BL 11220	24	3.9	1.4	36	2.42


BLACK-LINE Mushroom-head milling cutter center cutting

Materials to be processed

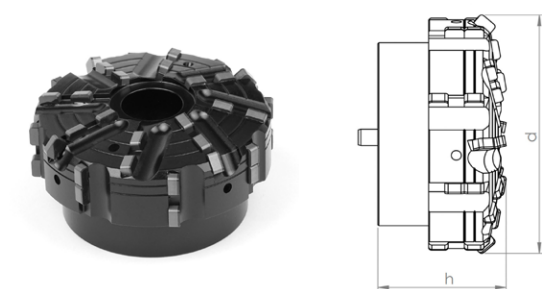
- Concrete
- Deposits / Fouling
- UV CIPP
- Roots
- PVC
- Vitrified Clay
- Felt CIPP

Note: Use on steel-reinforced concrete will destroy the cutting elements!

Field of Application

- Frontal milling
- Surface milling
- Removal of intruding obstacles
- Milling of offset socket transitions

Article-No.	Pipe Ø inch	d inch	h inch	Segments	Weight pounds
BL 11206	10	4.1	1.2	44	2.09
BL 11207	12	4.1	1.2	44	2.09
BL 11208	14 - 16	4.1	1.2	44	2.09
BL 11209	18 - 20	4.1	1.2	44	2.09
BL 11210	24	4.1	1.2	44	2.09

BLACK-LINE Inlet milling cutter

Materials to be processed

- Concrete
- Deposits / Fouling
- UV CIPP
- Roots
- PVC
- Vitrified Clay
- Felt CIPP

Note: Use on steel-reinforced concrete will destroy the cutting elements!

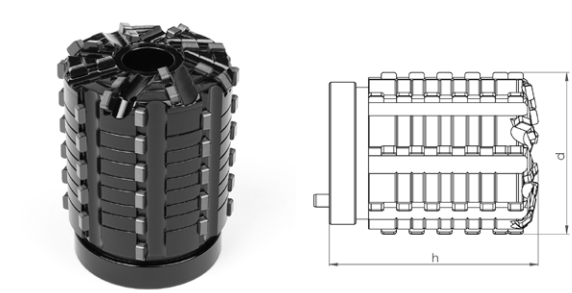
Field of Application

- Opening of laterals and inlet lines
- Preparatory milling of laterals
- Removal of intruding laterals
- Removal of intruding obstacles

Article-No.	Pipe Ø inch	d inch	h inch	Segments	Weight pounds
BL 11211	10 - 24	2.9	1.6	36	1.76



BLACK-LINE Cylinder milling cutter



Materials to be processed

- Concrete
- Deposits / Fouling
- UV CIPP
- Roots
- PVC
- Vitrified Clay
- Felt CIPP

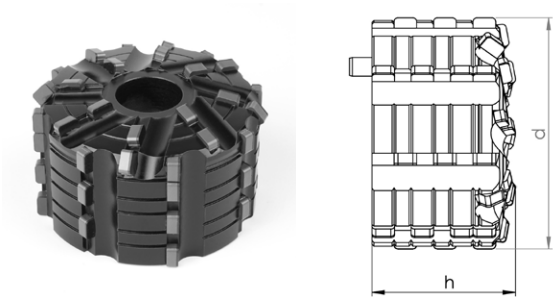
Note: Use on steel-reinforced concrete will destroy the cutting elements!

Field of Application

- Opening of laterals and inlet lines
- Preparatory milling of laterals
- Removal of intruding laterals
- Removal of intruding obstacles

Article-No.	d inch	h inch	Segments	Weight pounds
BL 11227	2.4	3.3	64	3.52

BLACK-LINE Cylinder milling cutter



Materials to be processed

- Concrete
- Deposits / Fouling
- UV CIPP
- Roots
- PVC
- Vitrified Clay
- Felt CIPP

Note: Use on steel-reinforced concrete will destroy the cutting elements!

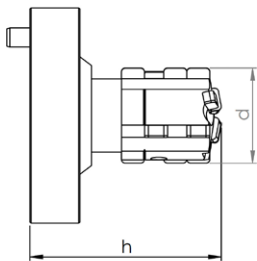
Field of Application

- Opening of laterals and inlet lines
- Preparatory milling of laterals
- Removal of intruding laterals
- Removal of intruding obstacles

Article-No.	d inch	h inch	Segments	Weight pounds
BL 11228	2.4	1.6	44	1.76



BLACK•LINE End milling cutter



Materials to be processed

- Concrete
- Deposits / Fouling
- UV CIPP
- Roots
- PVC
- Vitrified Clay
- Felt CIPP

Note: Use on steel-reinforced concrete will destroy the cutting elements!

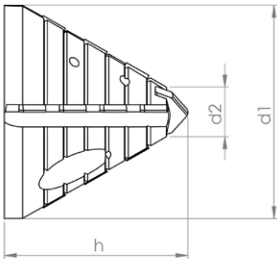
Field of Application

- Opening of laterals and inlet lines
- Preparatory milling of cracks and sockets

Article-No.	d inch	h inch	Segments	Weight pounds
BL 11213	1.1	2.0	14	0.66



linerCUT Pro® Tapered milling cutter with tungsten carbide tip



Materials to be processed

- UV CIPP
- Felt CIPP
- PVC

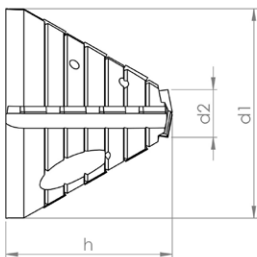
Note: Only suitable for processing CIPP liners and PVC!

Field of Application

- Opening of laterals and inlet lines

Article-No.	d1 inch	d2 inch	h inch	Segments	Weight pounds
BL 11221	2.4	0.8	2.0	14	0.88

linerCUT Pro® Tapered milling cutter with PCD tip



Materials to be processed

- UV CIPP
- Felt CIPP
- PVC

Note: Only suitable for processing CIPP liners and PVC!

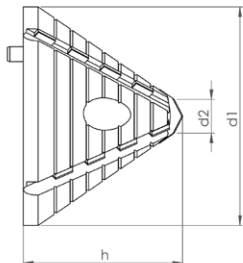
Field of Application

- Opening of laterals and inlet lines

Article-No.	d1 inch	d2 inch	h inch	Segments	Weight pounds
BL 11223	2.4	0.7	2.0	16	0.88



linerCUT Pro® Tapered milling cutter with tungsten carbide tip



Materials to be processed

- UV CIPP
- Felt CIPP
- PVC

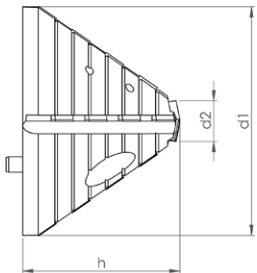
Note: Only suitable for processing CIPP liners and PVC!

Field of Application

- Opening of laterals and inlet lines

Article-No.	d1 inch	d2 inch	h inch	Segments	Weight pounds
BL 11226	3.0	0.8	2.2	16	1.43

linerCUT Pro® Tapered milling cutter with PCD tip



Materials to be processed

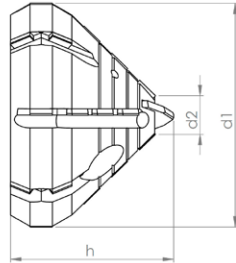
- UV CIPP
- Felt CIPP
- PVC

Note: Only suitable for processing CIPP liners and PVC!

Field of Application

- Opening of laterals and inlet lines

Article-No.	d1 inch	d2 inch	h inch	Segments	Weight pounds
BL 11225	3.0	0.7	2.0	18	1.43


linerCUT Pro® Taper/cylinder milling cutter with tungsten carbide tip

Materials to be processed

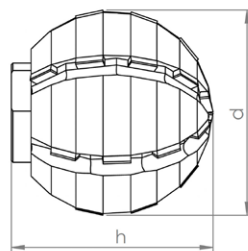
- UV CIPP
- Felt CIPP
- PVC

Note: Only suitable for processing CIPP liners and PVC!

Field of Application

- Opening of laterals and inlet lines

Article-No.	d1 inch	d2 inch	h inch	Segments	Weight pounds
BL 11222	2.8	0.8	2.0	24	1.43

linerCUT Pro® Ball milling cutter with additional water bore holes

Materials to be processed

- UV CIPP
- Felt CIPP
- PVC

Note: Only suitable for processing CIPP liners and PVC!

Field of Application

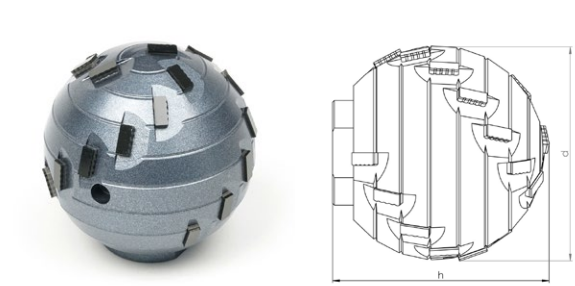
- Opening of laterals and inlet lines

Article-No.	d inch	h inch	Segments	Weight pounds
BL 11461	2.0	2.2	24	1.1

Note: Tool can only be used with matching adapter 90110!



linerCUT Pro® 2.0 Ball milling cutter with additional water bore holes



Materials to be processed

- UV CIPP
- Felt CIPP
- PVC

Note: Only suitable for processing CIPP liners and PVC!

Field of Application

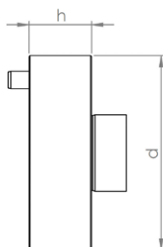
- Opening of laterals and inlet lines

Article-No.	d inch	h inch	Segments	Weight pounds
BL 11462	2.0	2.0	22	1.1

Note: Tool can only be used with matching adapter 90110!



Extension 18 mm



Description

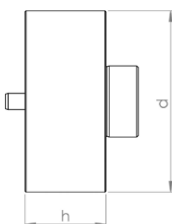
CNC fabricated tool extension for increased working radius of robot arm.

Specification

Stainless steel

Article-No.	d inch	h inch	Weight pounds
90114	2.2	0.7	0.66

Extension 25 mm



Description

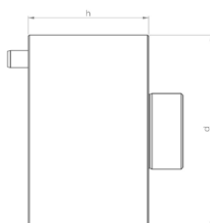
CNC fabricated tool extension for increased working radius of robot arm.

Specification

Stainless steel

Article-No.	d inch	h inch	Weight pounds
90115	2.2	1.0	0.88

Extension 35 mm



Description

CNC fabricated tool extension for increased working radius of robot arm.

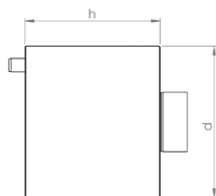
Specification

Stainless steel

Article-No.	d inch	h inch	Weight pounds
90183	2.2	1.4	1.32



Extension 50 mm



Description

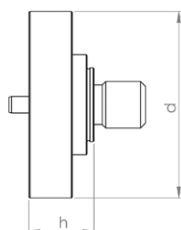
CNC fabricated tool extension for increased working radius of robot arm.

Specification

Stainless steel

Article-No.	d inch	h inch	Weight pounds
90116	2.2	2.0	1.98

Adapter for mounting of brushes and cutting discs



Description

CNC fabricated adapter for mounting of brushes and cutting discs.

Thread: M14 (14 mm O.D.)

Centering ring for cutting disc: Ø 22,2 mm

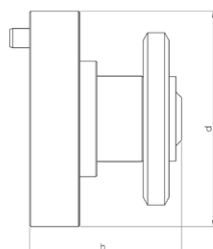
NOTE: When mounting wheel brushes or cutting discs, a locking disc is also required!

Specification

Stainless steel

Article-No.	d inch	h inch	Weight pounds
90110	2.2	0.7	0.55

Adapter for mounting of 4 cutting discs



Description

CNC fabricated adapter for mounting of 4 cutting discs.

Mounting shaft Ø 22,2 mm

includes 4 cutting discs and locking disc

NOTE: This adapter cannot be used to mount a single cutting disc!

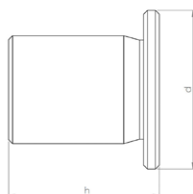
Specification

Stainless steel

Article-No.	d inch	h inch	Weight pounds
90170	2.2	1.9	0.55



Adapter for mounting a half ball grinding stone



Description

CNC fabricated adapter for mounting a half-ball grinding stone.

NOTE: This adapter can only be used with part number 81001!

Specification

Stainless steel

Article-No.	d inch	h inch	Weight pounds
90174	1.6	1.5	0.26

Locking disc for mounting of wheel brushes and cutting discs



Description

Thread: M14 (14 mm O.D.)

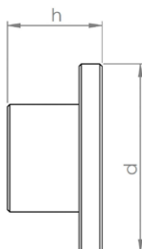
NOTE: Wheel brushes and cutting discs must be mounted using matching adapters!

Specification

Steel, burnished

Article-No.	d inch	h inch	Weight pounds
SP 90110	1.8	0.3	0.15

Protective cap for protection of locking ring of spring-mounted milling tools



Description

The protective cap covers the locking ring during the milling process.

The cap protects against abrasion and prevents ejection of the spring-action mounting element from the milling head.

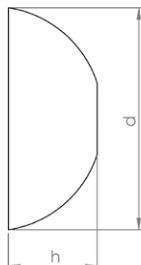
Specification

Steel

Article-No.	d inch	h inch	Weight pounds
90125	1.3	0.6	0.04



Grinding stone Half ball Ø 125 mm



Description

Half-ball grinding stone made of corundum, for cosmetic finishing of epoxy resin repaired side drains.

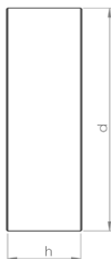
NOTE: Only useable with adapter 90174!

Specification

Corundum

Article-No.	d inch	h inch	Weight pounds
81001	4.9	2.0	1.43

Cup wheel Ø 80 mm



Description

Corundum cup wheel, for working on steel and cast iron. Mounting hole Ø 22,2 mm

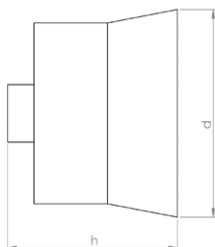
NOTE: May be used only with matching adapter and locking disc!

Specification

Corundum

Article-No.	d inch	h inch	Weight pounds
81003	3.1	1.1	0.44

Cup brush Ø 80 mm



Description

Premium rotary wire brush for finishing work on CIPP liners and PVC.

Mounting hole M14 (14 mm thread O.D.)

NOTE: May be used only with matching adapter!

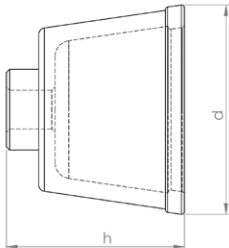
Specification

Wire thickness: Ø 0,5 mm

Article-No.	d inch	h inch	Weight pounds
80019	3.1	3.1	1.43



Cup brush Ø 65 mm



Description

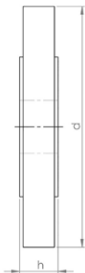
Premium rotary wire brush for finishing work on CIPP liners and PVC.
Mounting hole M14 (14 mm thread O.D.)
NOTE: May be used only with matching adapter!

Specification

Wire thickness: Ø 0,8 mm

Article-No.	d inch	h inch	Weight pounds
80020	2.6	2.0	0.55

Wheel brush Ø 100 mm



Description



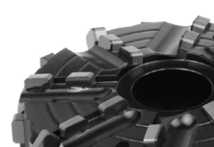


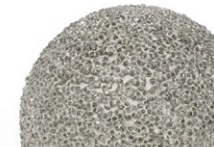

Premium rotary wire brush for finishing work on CIPP liners and PVC.
Mounting hole Ø 22,2 mm
NOTE: May be used only with matching adapter and locking disc!

Specification

Wire thickness: Ø 0,5 mm

Article-No.	d inch	h inch	Weight pounds
80018	3.9	0.6	0.44



	<p>Premium Diamond Tools for High-Performance Material Removal and Long Service Life</p> <p>Materials to be processed</p> <ul style="list-style-type: none"> Reinforced Concrete Concrete Deposits / Fouling Cast Iron Vitrified Clay <p>Page 27</p>
	<p>Field-Proven Standard Diamond Tools with Outstanding Value for Purchase Investment</p> <p>Materials to be processed</p> <ul style="list-style-type: none"> Reinforced Concrete Concrete Deposits / Fouling Cast Iron Vitrified Clay <p>Page 35</p>
	<p>High-Tech Milling Tools made of PCD with Unbeatable Cutting and Stock Removal Performance for Almost Every Material</p> <p>Materials to be processed</p> <ul style="list-style-type: none"> Concrete UV CIPP Deposits / Fouling Roots PVC Vitrified Clay Felt CIPP <p>Page 38</p>
	<p>Absolutely Smooth-Running and Precise PCD Cutting Tools for Opening CIPP - Optimized for UV CIPP -</p> <p>Materials to be processed</p> <ul style="list-style-type: none"> UV CIPP PVC Felt CIPP <p>Page 45</p>
	<p>Absolutely Smooth-Running and Precise PCD Cutting Tools for Opening CIPP - All Kinds of CIPP and PVC -</p> <p>Materials to be processed</p> <ul style="list-style-type: none"> UV CIPP PVC Felt CIPP <p>Page 49</p>
	<p>Milling Tools with Diamond Granules for Opening CIPP - Optimal for UV CIPP and Lined Cast Iron Pipes -</p> <p>Materials to be processed</p> <ul style="list-style-type: none"> UV CIPP PVC Felt CIPP <p>Page 50</p>
	<p>Cost-Efficient Milling Tools with Carbide Granulate Tipping for Opening and Reworking CIPP</p> <p>Materials to be processed</p> <ul style="list-style-type: none"> UV CIPP Roots PVC Felt CIPP <p>Page 52</p>



VHM•LINE



Special Milling Tools for Processing Steel and Cast Iron

Materials to be processed

- Cast Iron
- Steel

Page 54



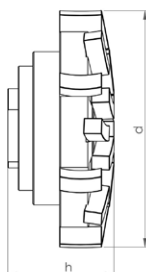
Functional Accessories

High-quality brushes, adapters, extensions, etc.

Page 55



Mushroom-head milling cutter spring-mounted



Materials to be processed

- Reinforced Concrete
- Concrete
- Deposits / Fouling
- Cast Iron
- Vitrified Clay

Field of Application

- Removal of intruding laterals
- Surface grinding and milling
- Removal of intruding obstacles
- Milling of offset socket transitions

Article-No.	Pipe Ø inch	d inch	h inch	Segments	Weight pounds
20044 P M14	8 - 12	3.5	1.6	21	1.54
20045 P M14	12 - 18	3.5	1.6	21	1.54
20046 P M14	18 - 24	3.5	1.6	21	1.54



Mushroom-head milling cutter machined for minimum runout



Materials to be processed

- Reinforced Concrete
- Concrete
- Deposits / Fouling
- Cast Iron
- Vitrified Clay

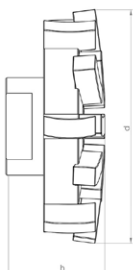
Field of Application

- Removal of intruding laterals
- Surface grinding and milling
- Milling of offset socket transitions

Article-No.	Pipe Ø inch	d inch	h inch	Segments	Weight pounds
20006 P M14	8 - 12	3.1	1.2	21	0.99
20007 P M14	12 - 18	3.1	1.2	21	0.99
20008 P M14	18 - 24	3.1	1.2	21	0.99



Mushroom-head milling cutter machined for minimum runout



Materials to be processed

- Reinforced Concrete
- Concrete
- Deposits / Fouling
- Cast Iron
- Vitrified Clay

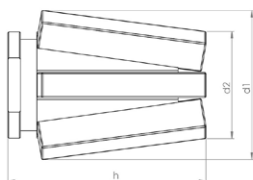
Field of Application

- Removal of intruding laterals
- Surface grinding and milling
- Milling of offset socket transitions

Article-No.	Pipe Ø inch	d inch	h inch	Segments	Weight pounds
20024 P M14	8 - 12	2.8	1.2	18	0.77
20025 P M14	12 - 18	2.8	1.2	18	0.77
20026 P M14	18 - 24	2.8	1.2	18	0.77



Tapered milling cutter machined for minimum runout



Materials to be processed

- Reinforced Concrete
- Concrete
- Cast Iron
- Vitrified Clay

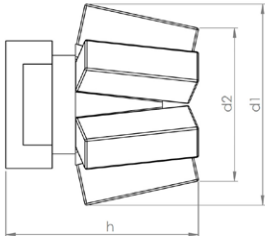
Field of Application

- Preparatory milling of laterals
- Removal of intruding laterals

Article-No.	d1 inch	d2 inch	h inch	Segments	Weight pounds
20013 P M14	1.5	1.1	2.1	6	0.33



Tapered milling cutter machined for minimum runout



Materials to be processed

- Reinforced Concrete
- Concrete
- Cast Iron
- Vitrified Clay

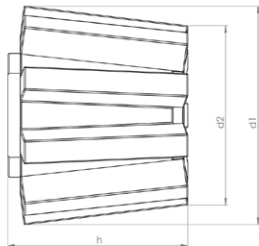
Field of Application

- Preparatory milling of laterals
- Removal of intruding laterals

Article-No.	d1 inch	d2 inch	h inch	Segments	Weight pounds
20027 P M14	1.4	1.1	1.3	6	0.22



Tapered milling cutter machined for minimum runout



Materials to be processed

- Reinforced Concrete
- Concrete
- Cast Iron
- Vitrified Clay

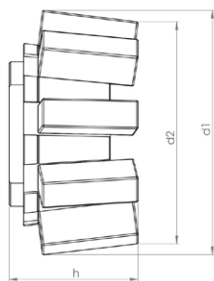
Field of Application

- Preparatory milling of laterals
- Removal of intruding laterals

Article-No.	d1 inch	d2 inch	h inch	Segments	Weight pounds
20004 P M14	2.0	1.7	1.6	9	0.66



Tapered milling cutter machined for minimum runout



Materials to be processed

- Reinforced Concrete
- Concrete
- Cast Iron
- Vitrified Clay

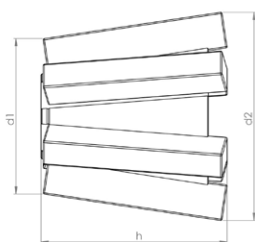
Field of Application

- Preparatory milling of laterals
- Removal of intruding laterals

Article-No.	d1 inch	d2 inch	h inch	Segments	Weight pounds
20001 P M14	2.0	1.8	1.0	9	0.44



V-shape milling cutter machined for minimum runout



Materials to be processed

- Reinforced Concrete
- Concrete
- Cast Iron
- Vitrified Clay

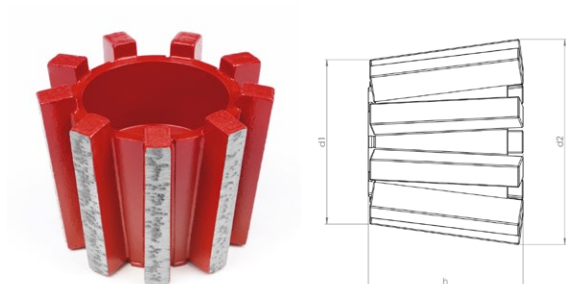
Field of Application

- Preparatory milling of laterals
- Removal of intruding laterals

Article-No.	d1 inch	d2 inch	h inch	Segments	Weight pounds
20043 P M14	1.4	1.8	1.7	6	0.33



V-shape milling cutter machined for minimum runout



Materials to be processed

- Reinforced Concrete
- Concrete
- Cast Iron
- Vitrified Clay

Field of Application

- Preparatory milling of laterals
- Removal of intruding laterals

Article-No.	d1 inch	d2 inch	h inch	Segments	Weight pounds
20039 P M14	1.7	2.0	1.7	9	0.66



Inlet milling cutter machined for minimum runout



Materials to be processed

- Reinforced Concrete
- Concrete
- Cast Iron
- Vitrified Clay

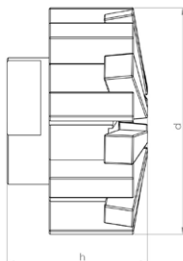
Field of Application

- Preparatory milling of laterals
- Removal of intruding laterals

Article-No.	d inch	h inch	Segments	Weight pounds
20015 P M14	2.7	1.3	16	0.88



Inlet milling cutter machined for minimum runout



Materials to be processed

- Reinforced Concrete
- Concrete
- Cast Iron
- Vitrified Clay

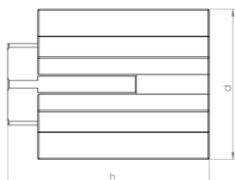
Field of Application

- Preparatory milling of laterals
- Removal of intruding laterals

Article-No.	d inch	h inch	Segments	Weight pounds
20047 P M14	2.2	1.4	16	0.66



Finger milling cutter machined for minimum runout



Materials to be processed

- Reinforced Concrete
- Concrete
- Cast Iron
- Vitrified Clay

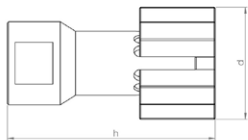
Field of Application

- Preparatory milling of cracks and sockets

Article-No.	d inch	h inch	Segments	Weight pounds
20048 P M14	1.4	2.0	7	0.44



Finger milling cutter machined for minimum runout



Materials to be processed

- Reinforced Concrete
- Concrete
- Cast Iron
- Vitrified Clay

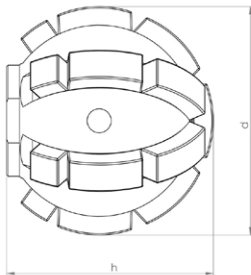
Field of Application

- Preparatory milling of cracks and sockets

Article-No.	d inch	h inch	Segments	Weight pounds
20003 P M14	1.2	2.2	5	0.22



Ball milling cutter



Materials to be processed

- Reinforced Concrete
- Concrete
- Deposits / Fouling
- Cast Iron
- Vitrified Clay

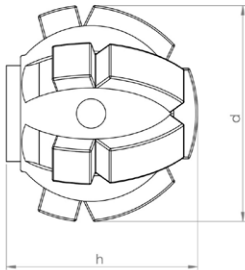
Field of Application

- Preparatory milling of laterals
- Removal of intruding laterals
- Removal of intruding obstacles

Article-No.	d inch	h inch	Segments	Weight pounds
20020 P M14	2.0	1.8	19	0.66



Ball milling cutter



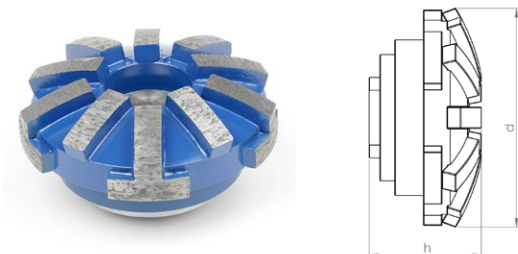
Materials to be processed

- Reinforced Concrete
- Concrete
- Deposits / Fouling
- Cast Iron
- Vitrified Clay

Field of Application

- Preparatory milling of laterals
- Removal of intruding laterals
- Removal of intruding obstacles

Article-No.	d inch	h inch	Segments	Weight pounds
20021 P M14	1.6	1.5	13	0.44


N•TEC II® Mushroom-head milling cutter spring-mounted

Materials to be processed

- Reinforced Concrete
- Concrete
- Deposits / Fouling
- Cast Iron
- Vitrified Clay

Field of Application

- Removal of intruding laterals
- Surface grinding and milling
- Removal of intruding obstacles
- Milling of offset socket transitions

Article-No.	Pipe Ø inch	d inch	h inch	Segments	Weight pounds
20036 M14	8 - 12	3.1	1.7	15	1.65
20037 M14	12 - 18	3.1	1.7	15	1.65
20038 M14	18 - 24	3.1	1.7	15	1.65

Note: Milling tools in other segment hardnesses are available on request.

N•TEC II® Mushroom-head milling cutter

Materials to be processed

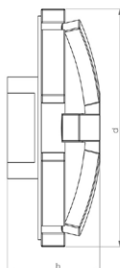
- Reinforced Concrete
- Concrete
- Deposits / Fouling
- Cast Iron
- Vitrified Clay

Field of Application

- Removal of intruding laterals
- Surface grinding and milling
- Milling of offset socket transitions

Article-No.	Pipe Ø inch	d inch	h inch	Segments	Weight pounds
20031 M14	8 - 12	2.8	1.2	15	0.77
20032 M14	12 - 18	2.8	1.2	15	0.77
20033 M14	18 - 24	2.8	1.2	15	0.77

Note: Milling tools in other segment hardnesses are available on request.


N•TEC II® Mushroom-head milling cutter

Materials to be processed

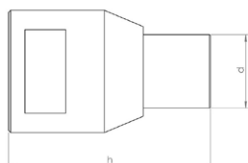
- Reinforced Concrete
- Concrete
- Deposits / Fouling
- Cast Iron
- Vitrified Clay

Field of Application

- Removal of intruding laterals
- Surface grinding and milling
- Milling of offset socket transitions

Article-No.	Pipe Ø inch	d inch	h inch	Segments	Weight pounds
21006 M14	8 - 12	2.8	1.2	10	0.66
21007 M14	12 - 18	2.8	1.2	10	0.66
21008 M14	18 - 24	2.8	1.2	10	0.66

Note: Milling tools in other segment hardnesses are available on request.

N•TEC II® Slot milling cutter

Materials to be processed

- Reinforced Concrete
- Concrete
- Cast Iron
- Vitrified Clay

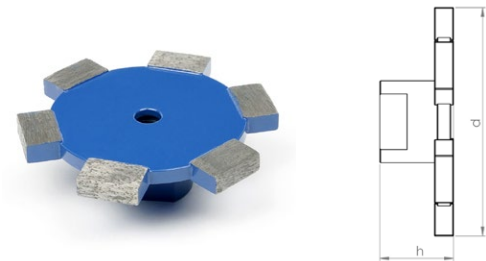
Field of Application

- Preparatory milling of cracks and sockets

Article-No.	d inch	h inch	Segments	Weight pounds
20009 M14	0.7	2.0	1	0.22



N•TEC II® Disk milling cutter



Materials to be processed

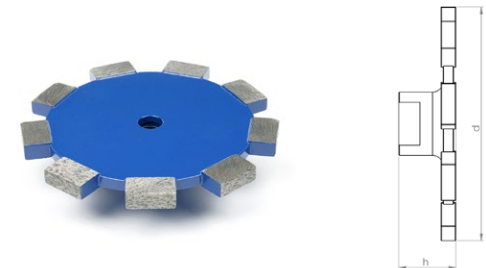
- Reinforced Concrete
- Concrete
- Vitrified Clay

Field of Application

- Milling of circumferential slots on laterals

Article-No.	d inch	h inch	Segments	Weight pounds
20041 M14	3.3	1.1	6	0.66

N•TEC II® Disk milling cutter



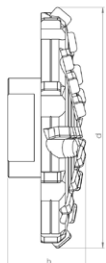
Materials to be processed

- Reinforced Concrete
- Concrete
- Vitrified Clay

Field of Application

- Milling of circumferential slots on laterals

Article-No.	d inch	h inch	Segments	Weight pounds
20042 M14	4.3	1.1	9	0.99


BLACK-LINE Mushroom-head milling cutter

Materials to be processed

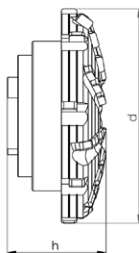
- Concrete
- Deposits / Fouling
- UV CIPP
- Roots
- PVC
- Vitrified Clay
- Felt CIPP

Note: Use on steel-reinforced concrete will destroy the cutting elements!

Field of Application

- Surface milling
- Removal of intruding obstacles
- Milling of offset socket transitions

Article-No.	Pipe Ø inch	d inch	h inch	Segments	Weight pounds
BL 11426 M14	8 - 18	2.5	1.0	28	0.44
BL 11401 M14	12 - 24	3.0	1.1	32	0.55

BLACK-LINE Mushroom-head milling cutter spring-mounted

Materials to be processed

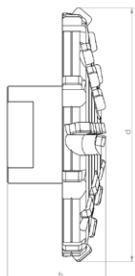
- Concrete
- Deposits / Fouling
- UV CIPP
- Roots
- PVC
- Vitrified Clay
- Felt CIPP

Note: Use on steel-reinforced concrete will destroy the cutting elements!

Field of Application

- Surface milling
- Removal of intruding obstacles
- Milling of offset socket transitions

Article-No.	Pipe Ø inch	d inch	h inch	Segments	Weight pounds
BL 11458 M14	8 - 12	3.1	1.5	32	1.54
BL 11459 M14	12 - 18	3.1	1.5	32	1.54
BL 11460 M14	18 - 24	3.1	1.5	32	1.54


BLACK-LINE Mushroom-head milling cutter center cutting

Materials to be processed

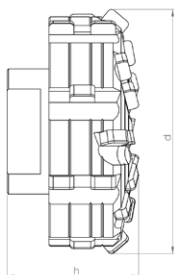
- Concrete
- Deposits / Fouling
- UV CIPP
- Roots
- PVC
- Vitrified Clay
- Felt CIPP

Note: Use on steel-reinforced concrete will destroy the cutting elements!

Field of Application

- Frontal milling
- Surface milling
- Removal of intruding obstacles
- Milling of offset socket transitions

Article-No.	Pipe Ø inch	d inch	h inch	Segments	Weight pounds
BL 11427 M14	8 - 18	2.6	1.1	30	0.44
BL 11402 M14	12 - 24	3.0	1.3	34	0.66

BLACK-LINE Inlet milling cutter

Materials to be processed

- Concrete
- Deposits / Fouling
- UV CIPP
- Roots
- PVC
- Vitrified Clay
- Felt CIPP

Note: Use on steel-reinforced concrete will destroy the cutting elements!

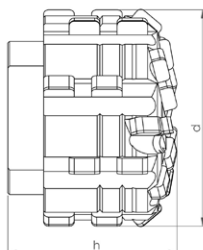
Field of Application

- Opening of laterals and inlet lines
- Preparatory milling of laterals
- Removal of intruding laterals
- Removal of intruding obstacles

Article-No.	d inch	h inch	Segments	Weight pounds
BL 11409 M14	2.2	1.2	28	0.77



BLACK-LINE Inlet milling cutter



Materials to be processed

- Concrete
- Deposits / Fouling
- UV CIPP
- Roots
- PVC
- Vitrified Clay
- Felt CIPP

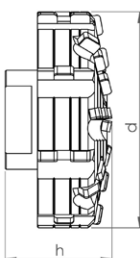
Note: Use on steel-reinforced concrete will destroy the cutting elements!

Field of Application

- Opening of laterals and inlet lines
- Preparatory milling of laterals
- Removal of intruding laterals
- Removal of intruding obstacles

Article-No.	d inch	h inch	Segments	Weight pounds
BL 11451 M14	1.8	1.3	32	0.44

BLACK-LINE Inlet milling cutter center cutting



Materials to be processed

- Concrete
- Deposits / Fouling
- UV CIPP
- Roots
- PVC
- Vitrified Clay
- Felt CIPP

Note: Use on steel-reinforced concrete will destroy the cutting elements!

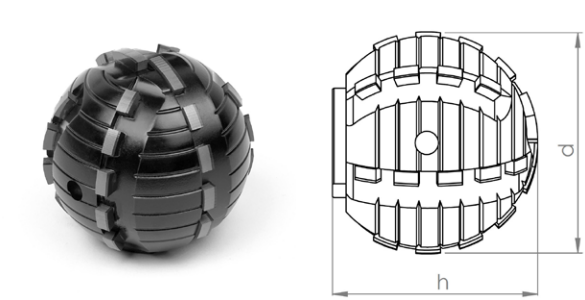
Field of Application

- Opening of laterals and inlet lines
- Preparatory milling of laterals
- Removal of intruding laterals
- Frontal milling
- Surface milling
- Removal of intruding obstacles

Article-No.	d inch	h inch	Segments	Weight pounds
BL 11452 M14	2.8	1.3	34	0.88



BLACK-LINE Ball milling cutter



Materials to be processed

- UV CIPP
- PVC
- Roots
- Felt CIPP

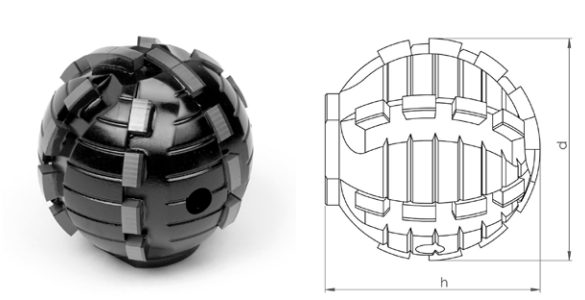
Note: Only suitable for processing CIPP liners and PVC and for cutting roots!

Field of Application

- Opening of laterals and inlet lines
- Removal of intruding obstacles

Article-No.	d inch	h inch	Segments	Weight pounds
BL 11410 M14	2.0	1.8	30	0.88

BLACK-LINE Ball milling cutter



Materials to be processed

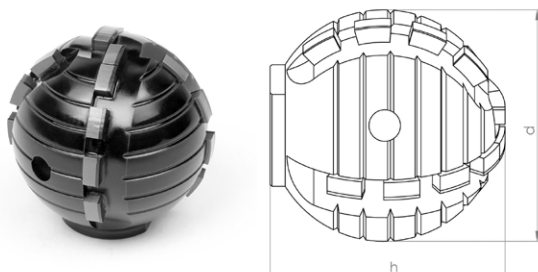
- UV CIPP
- PVC
- Roots
- Felt CIPP

Note: Only suitable for processing CIPP liners and PVC and for cutting roots!

Field of Application

- Opening of laterals and inlet lines
- Removal of intruding obstacles

Article-No.	d inch	h inch	Segments	Weight pounds
BL 11446 M14	1.6	1.7	26	0.55


BLACK-LINE Ball milling cutter

Materials to be processed

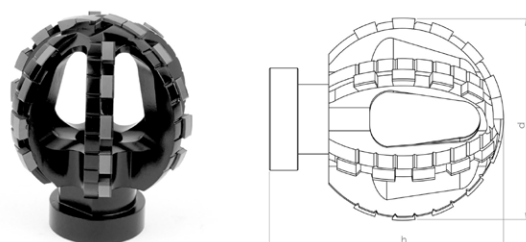
- UV CIPP
- PVC
- Roots
- Felt CIPP

Note: Only suitable for processing CIPP liners and PVC and for cutting roots!

Field of Application

- Opening of laterals and inlet lines
- Removal of intruding obstacles

Article-No.	d inch	h inch	Segments	Weight pounds
BL 11414 M14	1.6	1.7	18	0.55

BLACK-LINE Ball milling cutter Type ProView®

Materials to be processed

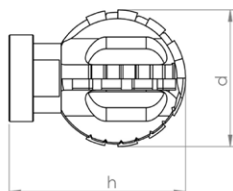
- UV CIPP
- PVC
- Roots
- Felt CIPP

Note: Only suitable for processing CIPP liners and PVC and for cutting roots!

Field of Application

- Opening of laterals and inlet lines
- Removal of intruding obstacles

Article-No.	d inch	h inch	Segments	Weight pounds
BL 11116 M14	2.0	2.2	30	0.44


BLACK-LINE Ball milling cutter Type ProView®

Materials to be processed

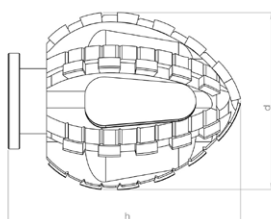
- UV CIPP
- PVC
- Roots
- Felt CIPP

Note: Only suitable for processing CIPP liners and PVC and for cutting roots!

Field of Application

- Opening of laterals and inlet lines
- Removal of intruding obstacles

Article-No.	d inch	h inch	Segments	Weight pounds
BL 11117 M14	1.6	2.0	18	0.33

BLACK-LINE Double-cone milling cutter Type ProView®

Materials to be processed

- UV CIPP
- PVC
- Roots
- Felt CIPP

Note: Only suitable for processing CIPP liners and PVC and for cutting roots!

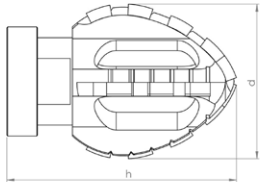
Field of Application

- Opening of laterals and inlet lines
- Removal of intruding obstacles

Article-No.	d inch	h inch	Segments	Weight pounds
BL 11113 M14	1.8	2.4	34	0.35



BLACK•LINE Double-cone milling cutter Type ProView®



Materials to be processed

- UV CIPP
- PVC
- Roots
- Felt CIPP

Note: Only suitable for processing CIPP liners and PVC and for cutting roots!

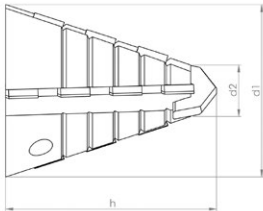
Field of Application

- Opening of laterals and inlet lines
- Removal of intruding obstacles

Article-No.	d inch	h inch	Segments	Weight pounds
BL 11118 M14	1.4	2.1	16	0.33



linerCUT Pro® Tapered milling cutter with tungsten carbide tip



Materials to be processed

- UV CIPP
- Felt CIPP
- PVC

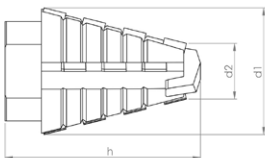
Note: Only suitable for processing CIPP liners and PVC!

Field of Application

- Opening of laterals and inlet lines

Article-No.	d1 inch	d2 inch	h inch	Segments	Weight pounds
BL 11463 M14	1.6	0.7	1.9	14	0.3

linerCUT Pro® Tapered milling cutter with tungsten carbide tip



Materials to be processed

- UV CIPP
- Felt CIPP
- PVC

Note: Only suitable for processing CIPP liners and PVC!

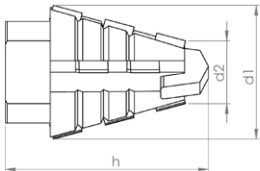
Field of Application

- Opening of laterals and inlet lines

Article-No.	d1 inch	d2 inch	h inch	Segments	Weight pounds
BL 11437 M14	1.1	0.7	1.8	14	0.17



linerCUT Pro® Tapered milling cutter with tungsten carbide tip



Materials to be processed

- UV CIPP
- Felt CIPP
- PVC

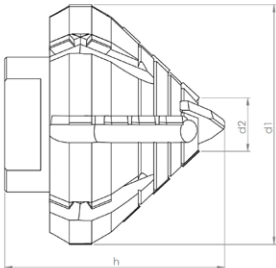
Note: Only suitable for processing CIPP liners and PVC!

Field of Application

- Opening of laterals and inlet lines

Article-No.	d1 inch	d2 inch	h inch	Segments	Weight pounds
BL 11438 M14	1.2	0.7	1.4	10	0.13

linerCUT Pro® Taper/cylinder milling cutter with tungsten carbide tip



Materials to be processed

- UV CIPP
- Felt CIPP
- PVC

Note: Only suitable for processing CIPP liners and PVC!

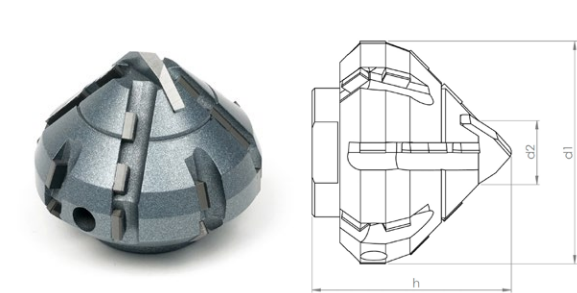
Field of Application

- Opening of laterals and inlet lines

Article-No.	d1 inch	d2 inch	h inch	Segments	Weight pounds
BL 11441 M14	2.2	0.8	1.8	24	0.66



linerCUT Pro® Taper/cylinder milling cutter with tungsten carbide tip



Materials to be processed

- UV CIPP
- Felt CIPP
- PVC

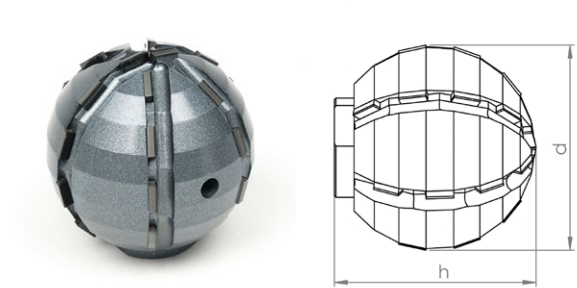
Note: Only suitable for processing CIPP liners and PVC!

Field of Application

- Opening of laterals and inlet lines

Article-No.	d1 inch	d2 inch	h inch	Segments	Weight pounds
BL 11439 M14	1.8	0.8	1.6	22	0.44

linerCUT Pro® Ball milling cutter



Materials to be processed

- UV CIPP
- Felt CIPP
- PVC

Note: Only suitable for processing CIPP liners and PVC!

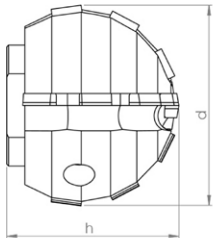
Field of Application

- Opening of laterals and inlet lines

Article-No.	d inch	h inch	Segments	Weight pounds
BL 11444 M14	2.0	2.2	24	1.1



linerCUT Pro® Ball milling cutter



Materials to be processed

- UV CIPP
- Felt CIPP
- PVC

Note: Only suitable for processing CIPP liners and PVC!

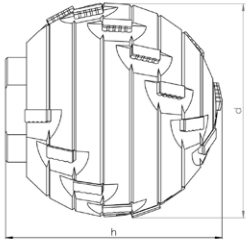
Field of Application

- Opening of laterals and inlet lines

Article-No.	d inch	h inch	Segments	Weight pounds
BL 11443 M14	1.6	1.4	12	0.44



linerCUT Pro® 2.0 Ball milling cutter



Materials to be processed

- UV CIPP
- Felt CIPP
- PVC

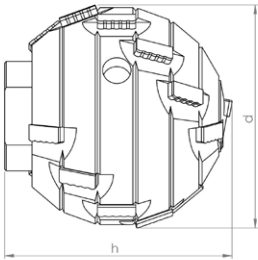
Note: Only suitable for processing CIPP liners and PVC!

Field of Application

- Opening of laterals and inlet lines

Article-No.	d inch	h inch	Segments	Weight pounds
BL 11449 M14	2.0	2.0	22	1.1

linerCUT Pro® 2.0 Ball milling cutter



Materials to be processed

- UV CIPP
- Felt CIPP
- PVC

Note: Only suitable for processing CIPP liners and PVC!

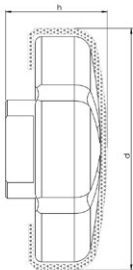
Field of Application

- Opening of laterals and inlet lines

Article-No.	d inch	h inch	Segments	Weight pounds
BL 11448 M14	1.6	1.6	18	0.55



D•GRIT Inlet milling cutter



Materials to be processed

- UV CIPP
- Felt CIPP
- PVC

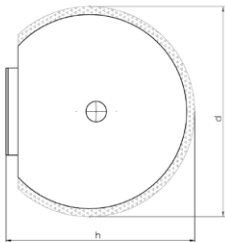
Note: Only suitable for processing CIPP liners and PVC!

Field of Application

- Opening of laterals and inlet lines
- CIPP liner finishing

Article-No.	d inch	h inch	Grit	Weight pounds
70011 M14	2.8	1.2	Diamond	1.1

D•GRIT Ball milling cutter



Materials to be processed

- UV CIPP
- Felt CIPP
- PVC

Note: Only suitable for processing CIPP liners and PVC!

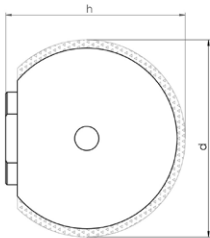
Field of Application

- Opening of laterals and inlet lines
- CIPP liner finishing

Article-No.	d inch	h inch	Grit	Weight pounds
70002 M14	2.0	1.9	Diamond	0.99



D•GRIT Ball milling cutter



Materials to be processed

- UV CIPP
- Felt CIPP
- PVC

Note: Only suitable for processing CIPP liners and PVC!

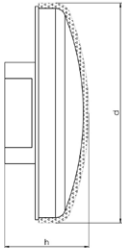
Field of Application

- Opening of laterals and inlet lines
- CIPP liner finishing

Article-No.	d inch	h inch	Grit	Weight pounds
70001 M14	1.6	1.5	Diamond	0.55



HM•LINE Mushroom-head milling cutter



Materials to be processed

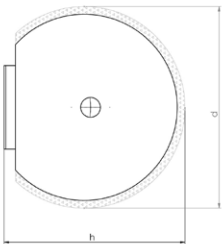
- UV CIPP
- PVC
- Roots
- Felt CIPP

Field of Application

- Removal of intruding obstacles
- CIPP liner finishing

Article-No.	d inch	h inch	Grit	Weight pounds
50003 M14	2.6	1.2	Carbide	0.66

HM•LINE Ball milling cutter



Materials to be processed

- UV CIPP
- PVC
- Roots
- Felt CIPP

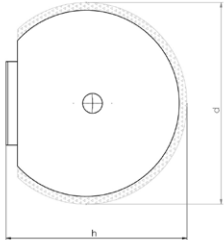
Field of Application

- Opening of laterals and inlet lines
- Removal of intruding obstacles
- CIPP liner finishing

Article-No.	d inch	h inch	Grit	Weight pounds
50001 M14	2.0	2.0	Carbide	1.32



HM•LINE Ball milling cutter



Materials to be processed

- UV CIPP
- PVC
- Roots
- Felt CIPP

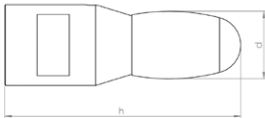
Field of Application

- Opening of laterals and inlet lines
- Removal of intruding obstacles
- CIPP liner finishing

Article-No.	d inch	h inch	Grit	Weight pounds
50002 M14	1.6	1.7	Carbide	0.66



VHM•LINE oval shaped



Materials to be processed

- Cast Iron
- Steel

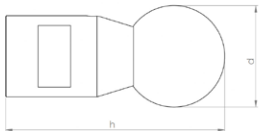
Note: Use on concrete or vitrified clay will destroy the cutting elements!

Field of Application

- Removal of intruding obstacles

Article-No.	d inch	h inch	Segments	Weight pounds
60007 M14	0.6	2.4	1	0.33

VHM•LINE ball shaped



Materials to be processed

- Cast Iron
- Steel

Note: Use on concrete or vitrified clay will destroy the cutting elements!

Field of Application

- Removal of intruding obstacles

Article-No.	d inch	h inch	Segments	Weight pounds
60008 M14	1.0	2.4	1	0.33



Extension 30 mm



Description
CNC fabricated tool extension for increased working radius of robot arm.

Specification
Stainless steel

Article-No.	d inch	h inch	Weight pounds
90120 M14	1.2	1.2	0.33

Extension 40 mm

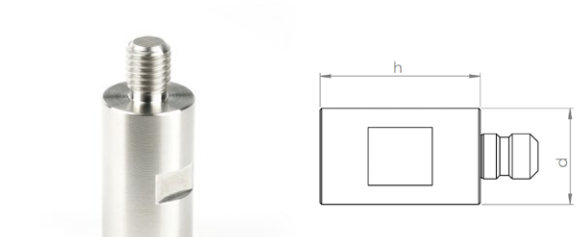


Description
CNC fabricated tool extension for increased working radius of robot arm.

Specification
Stainless steel

Article-No.	d inch	h inch	Weight pounds
90121 M14	1.2	1.6	0.44

Extension 50 mm



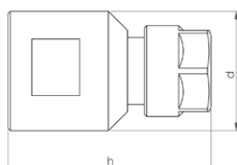
Description
CNC fabricated tool extension for increased working radius of robot arm.

Specification
Stainless steel

Article-No.	d inch	h inch	Weight pounds
90122 M14	1.2	2.0	0.55



Adapter for mounting commercially available shank tools Ø 1/4"



Description

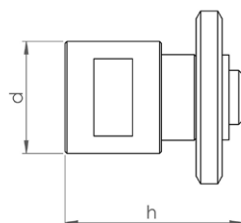
CNC fabricated collet chuck adapter for mounting commercially available shank tools.
e.g. burrs, brushes, flap grinders etc...
Mounting: Shank Ø 1/4"

Specification

Stainless steel

Article-No.	d inch	h inch	Weight pounds
90171 M14	1.2	1.6	0.22

Adapter for mounting of 3 cutting discs



Description

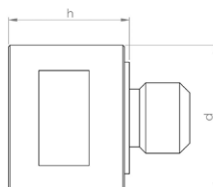
CNC fabricated adapter for mounting of 3 cutting discs.
Mounting shaft Ø 22,2 mm
includes 3 cutting discs and locking disc
NOTE: This adapter cannot be used to mount a single cutting disc!

Specification

Stainless steel

Article-No.	d inch	h inch	Weight pounds
90168 M14	1.2	1.8	0.44

Adapter for mounting of brushes and cutting discs



Description

CNC fabricated adapter for mounting of brushes and cutting discs.
Thread: M14 (14 mm O.D.)
Centering ring for cutting disc: Ø 22,2 mm
NOTE: When mounting wheel brushes or cutting discs, a locking disc is also required!

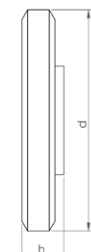
Specification

Stainless steel

Article-No.	d inch	h inch	Weight pounds
90112 M14	1.2	1.0	0.24



Locking disc for mounting of wheel brushes and cutting discs



Description

Thread: M14 (14 mm O.D.)

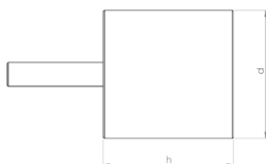
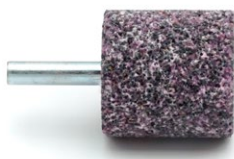
NOTE: Wheel brushes and cutting discs must be mounted using matching adapters!

Specification

Steel, burnished

Article-No.	d inch	h inch	Weight pounds
SP 90110	1.8	0.3	0.15

Mounted point-cylindrical



Description

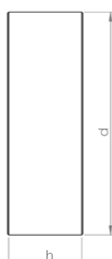
Corundum mounted point, for working on steel and cast iron.
NOTE: Only useable with adapter!

Specification

Corundum

Article-No.	d inch	h inch	Weight pounds
81002	1.3	1.3	0.17

Cup wheel Ø 80 mm



Description

Corundum cup wheel, for working on steel and cast iron.
Mounting hole Ø 22,2 mm

NOTE: May be used only with matching adapter and locking disc!

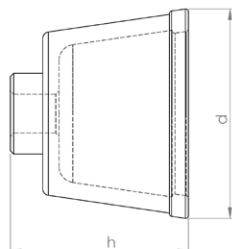
Specification

Corundum

Article-No.	d inch	h inch	Weight pounds
81003	3.1	1.1	0.44



Cup brush Ø 65 mm



Description

Premium rotary wire brush for finishing work on CIPP liners and PVC.

Mounting hole M14 (14 mm thread O.D.)

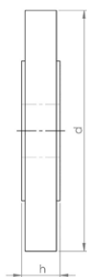
NOTE: May be used only with matching adapter!

Specification

Wire thickness: Ø 0,8 mm

Article-No.	d inch	h inch	Weight pounds
80020	2.6	2.0	0.55

Wheel brush Ø 100 mm



Description

Premium rotary wire brush for finishing work on CIPP liners and PVC.

Mounting hole Ø 22,2 mm

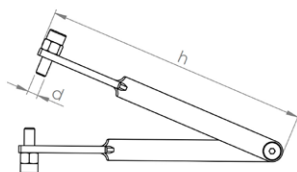
NOTE: May be used only with matching adapter and locking disc!

Specification

Wire thickness: Ø 0,5 mm

Article-No.	d inch	h inch	Weight pounds
80018	3.9	0.6	0.44

Pin-tipped tongs for safe tool changeover



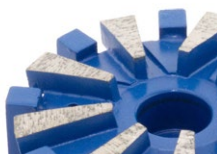
Description

The tongs are fitted with pin (with adjustable gripping depth) which are inserted into the gripping holes of the milling tools, permitting safe changeover without risking damage to the tooling.

Specification

Steel

Article-No.	d inch	h inch	Weight pounds
92002	0.2	5.9	0.27

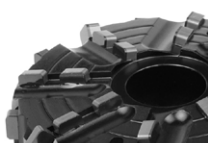
**N•TEC II®**

Field-Proven Standard Diamond Tools with Outstanding Value for Purchase Investment

Materials to be processed

- Reinforced Concrete
- Concrete
- Deposits / Fouling
- Cast Iron
- Vitrified Clay

Page 61

BLACK•LINE

High-Tech Milling Tools made of PCD with Unbeatable Cutting and Stock Removal Performance for Almost Every Material

Materials to be processed

- UV CIPP
- Roots
- PVC
- Felt CIPP

Page 63

linerCUT Pro®

Absolutely Smooth-Running and Precise PCD Cutting Tools for Opening CIPP - Optimized for UV CIPP -

Materials to be processed

- UV CIPP
- PVC
- Felt CIPP

Page 70

linerCUT Pro® 2.0

Absolutely Smooth-Running and Precise PCD Cutting Tools for Opening CIPP - All Kinds of CIPP and PVC -

Materials to be processed

- UV CIPP
- PVC
- Felt CIPP

Page 72

D•GRIT

Milling Tools with Diamond Granules for Opening CIPP - Optimal for UV CIPP and Lined Cast Iron Pipes -

Materials to be processed

- UV CIPP
- PVC
- Felt CIPP

Page 73

HM•LINE

Cost-Efficient Milling Tools with Carbide Granulate Tipping for Opening and Reworking CIPP

Materials to be processed

- UV CIPP
- Roots
- PVC
- Felt CIPP

Page 74

VHM•LINE

Special Milling Tools for Processing Steel and Cast Iron

Materials to be processed

- Cast Iron
- Steel

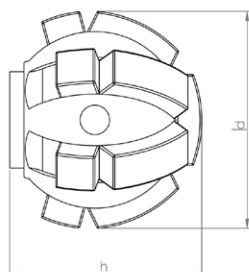
Page 76



Functional Accessories

High-quality brushes, adapters, extensions, etc.

Page 77

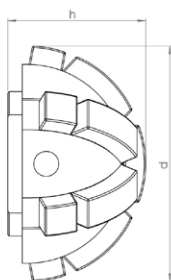

N•TEC II® Ball milling cutter

Materials to be processed

- Reinforced Concrete
- Concrete
- Deposits / Fouling
- Cast Iron
- Vitrified Clay

Field of Application

- Preparatory milling of laterals
- Removal of intruding laterals
- Removal of intruding obstacles

Article-No.	d inch	h inch	Segments	Weight pounds
20021 M8	1.6	1.5	13	0.44

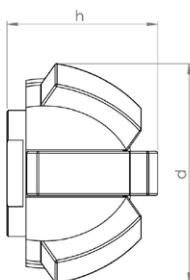
N•TEC II® Half-ball milling cutter

Materials to be processed

- Reinforced Concrete
- Concrete
- Deposits / Fouling
- Cast Iron
- Vitrified Clay

Field of Application

- Preparatory milling of laterals
- Removal of intruding laterals
- Frontal milling
- Removal of intruding obstacles

Article-No.	d inch	h inch	Segments	Weight pounds
20034 M8	2.0	1.1	13	0.33


N•TEC II® Half-ball milling cutter

Materials to be processed

- Reinforced Concrete
- Concrete
- Deposits / Fouling
- Cast Iron
- Vitrified Clay

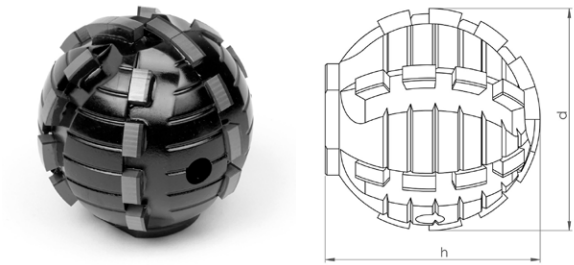
Field of Application

- Preparatory milling of laterals
- Removal of intruding laterals
- Frontal milling
- Removal of intruding obstacles

Article-No.	d inch	h inch	Segments	Weight pounds
20035 M8	1.4	1.0	7	0.22



BLACK-LINE Ball milling cutter



Materials to be processed

- UV CIPP
- PVC
- Roots
- Felt CIPP

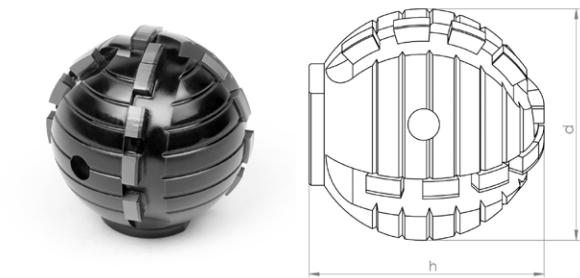
Note: Only suitable for processing CIPP liners and PVC and for cutting roots!

Field of Application

- Opening of laterals and inlet lines
- Removal of intruding obstacles

Article-No.	d inch	h inch	Segments	Weight pounds
BL 11446 M8	1.6	1.7	26	0.55

BLACK-LINE Ball milling cutter



Materials to be processed

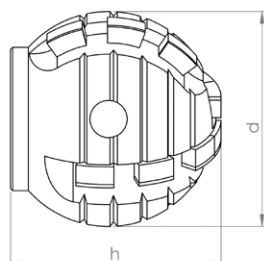
- UV CIPP
- PVC
- Roots
- Felt CIPP

Note: Only suitable for processing CIPP liners and PVC and for cutting roots!

Field of Application

- Opening of laterals and inlet lines
- Removal of intruding obstacles

Article-No.	d inch	h inch	Segments	Weight pounds
BL 11414 M8	1.6	1.7	18	0.55


BLACK-LINE Ball milling cutter

Materials to be processed

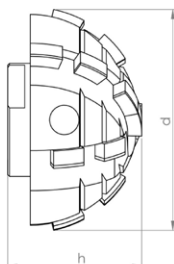
- UV CIPP
- PVC
- Roots
- Felt CIPP

Note: Use on steel-reinforced concrete will destroy the cutting elements!

Field of Application

- Opening of laterals and inlet lines
- Removal of intruding obstacles

Article-No.	d inch	h inch	Segments	Weight pounds
BL 11408 M8	1.2	1.3	14	0.22

BLACK-LINE Half-ball milling cutter

Materials to be processed

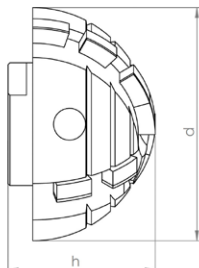
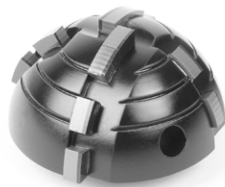
- UV CIPP
- PVC
- Roots
- Felt CIPP

Note: Use on steel-reinforced concrete will destroy the cutting elements!

Field of Application

- Opening of laterals and inlet lines
- Removal of intruding obstacles

Article-No.	d inch	h inch	Segments	Weight pounds
BL 11465 M8	1.6	1.0	16	0.33


BLACK-LINE Half-ball milling cutter

Materials to be processed

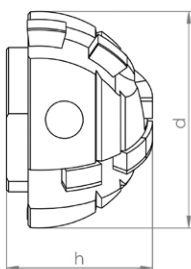
- UV CIPP
- PVC
- Roots
- Felt CIPP

Note: Use on steel-reinforced concrete will destroy the cutting elements!

Field of Application

- Opening of laterals and inlet lines
- Removal of intruding obstacles

Article-No.	d inch	h inch	Segments	Weight pounds
BL 11428 M8	1.6	1.0	12	0.15

BLACK-LINE Half-ball milling cutter

Materials to be processed

- UV CIPP
- PVC
- Roots
- Felt CIPP

Note: Use on steel-reinforced concrete will destroy the cutting elements!

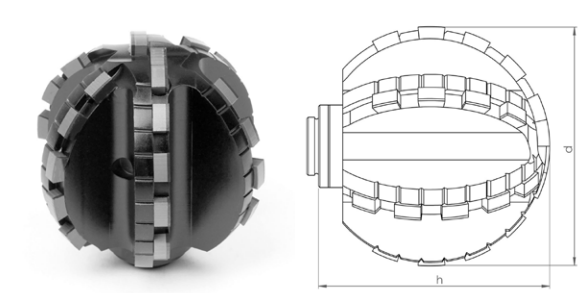
Field of Application

- Opening of laterals and inlet lines
- Removal of intruding obstacles

Article-No.	d inch	h inch	Segments	Weight pounds
BL 11429 M8	1.2	0.8	8	0.13



BLACK•LINE Ball milling cutter Type ProView®



Materials to be processed

- UV CIPP
- PVC
- Roots
- Felt CIPP

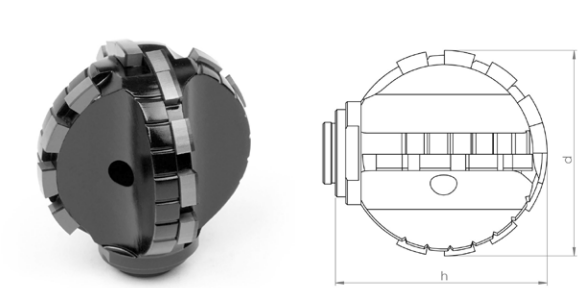
Note: Only suitable for processing CIPP liners and PVC and for cutting roots!

Field of Application

- Opening of laterals and inlet lines
- Removal of intruding obstacles

Article-No.	d inch	h inch	Segments	Weight pounds
BL 11108 M8	2.0	1.8	30	0.33

BLACK•LINE Ball milling cutter Type ProView®



Materials to be processed

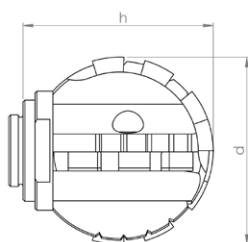
- UV CIPP
- PVC
- Roots
- Felt CIPP

Note: Only suitable for processing CIPP liners and PVC and for cutting roots!

Field of Application

- Opening of laterals and inlet lines
- Removal of intruding obstacles

Article-No.	d inch	h inch	Segments	Weight pounds
BL 11103 M8	1.6	1.5	18	0.33


BLACK-LINE Ball milling cutter Type ProView®

Materials to be processed

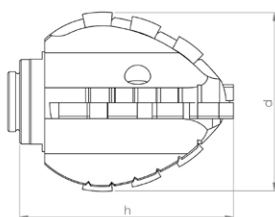
- UV CIPP
- PVC
- Roots
- Felt CIPP

Note: Only suitable for processing CIPP liners and PVC and for cutting roots!

Field of Application

- Opening of laterals and inlet lines
- Removal of intruding obstacles

Article-No.	d inch	h inch	Segments	Weight pounds
BL 11101 M8	1.3	1.2	14	0.13

BLACK-LINE Double-cone milling cutter Type ProView®

Materials to be processed

- UV CIPP
- PVC
- Roots
- Felt CIPP

Note: Only suitable for processing CIPP liners and PVC and for cutting roots!

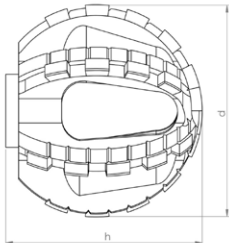
Field of Application

- Opening of laterals and inlet lines

Article-No.	d inch	h inch	Segments	Weight pounds
BL 11107 M8	1.4	1.6	16	0.22



BLACK-LINE Ball milling cutter Type ProView®



Materials to be processed

- UV CIPP
- PVC
- Roots
- Felt CIPP

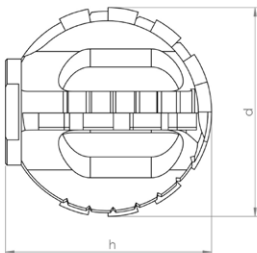
Note: Only suitable for processing CIPP liners and PVC and for cutting roots!

Field of Application

- Opening of laterals and inlet lines
- Removal of intruding obstacles

Article-No.	d inch	h inch	Segments	Weight pounds
BL 11114 M8	2.0	1.8	30	0.33

BLACK-LINE Ball milling cutter Type ProView®



Materials to be processed

- UV CIPP
- PVC
- Roots
- Felt CIPP

Note: Only suitable for processing CIPP liners and PVC and for cutting roots!

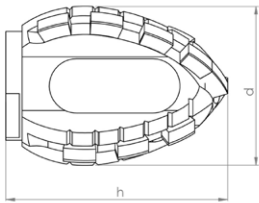
Field of Application

- Opening of laterals and inlet lines
- Removal of intruding obstacles

Article-No.	d inch	h inch	Segments	Weight pounds
BL 11110 M8	1.6	1.5	18	0.33



BLACK-LINE Double-cone milling cutter Type ProView®



Materials to be processed

- UV CIPP
- PVC
- Roots
- Felt CIPP

Note: Only suitable for processing CIPP liners and PVC and for cutting roots!

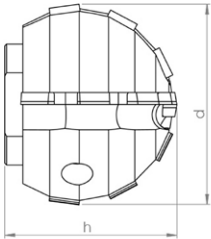

Field of Application

- Opening of laterals and inlet lines

Article-No.	d inch	h inch	Segments	Weight pounds
BL 11112 M8	1.4	1.6	16	0.22



linerCUT Pro® Ball milling cutter



Materials to be processed

- UV CIPP
- Felt CIPP
- PVC

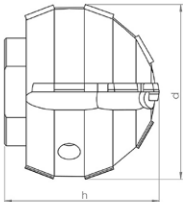

Note: Only suitable for processing CIPP liners and PVC!

Field of Application

- Opening of laterals and inlet lines

Article-No.	d inch	h inch	Segments	Weight pounds
BL 11443 M8	1.6	1.4	12	0.44

linerCUT Pro® Ball milling cutter



Materials to be processed

- UV CIPP
- Felt CIPP
- PVC

Note: Only suitable for processing CIPP liners and PVC!

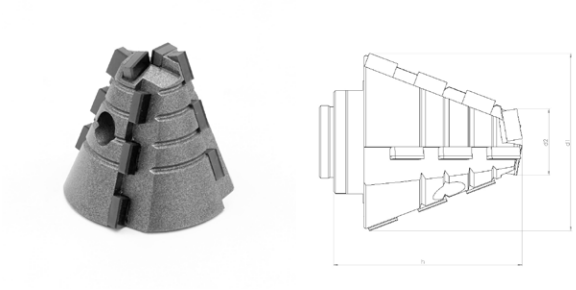
Field of Application

- Opening of laterals and inlet lines

Article-No.	d inch	h inch	Segments	Weight pounds
BL 11442 M8	1.2	1.1	14	0.22



linerCUT Pro® Tapered milling cutter with PCD tip



Materials to be processed

- UV CIPP
- Felt CIPP
- PVC

Note: Only suitable for processing CIPP liners and PVC!

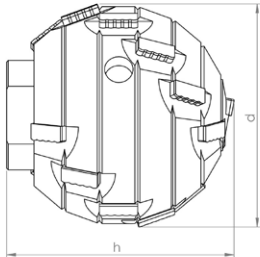
Field of Application

- Opening of laterals and inlet lines

Article-No.	d1 inch	d2 inch	h inch	Segments	Weight pounds
BL 11470 M8	1.2	0.4	1.2	14	0.13



linerCUT Pro® 2.0 Ball milling cutter



Materials to be processed

- UV CIPP
- Felt CIPP
- PVC

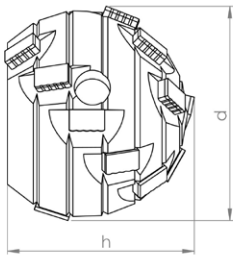
Note: Only suitable for processing CIPP liners and PVC!

Field of Application

- Opening of laterals and inlet lines

Article-No.	d inch	h inch	Segments	Weight pounds
BL 11448 M8	1.6	1.6	18	0.55

linerCUT Pro® 2.0 Ball milling cutter



Materials to be processed

- UV CIPP
- Felt CIPP
- PVC

Note: Only suitable for processing CIPP liners and PVC!

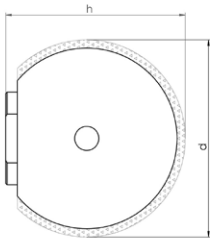
Field of Application

- Opening of laterals and inlet lines

Article-No.	d inch	h inch	Segments	Weight pounds
BL 11447 M8	1.2	1.0	16	0.22



D•GRIT Ball milling cutter



Materials to be processed

- UV CIPP
- Felt CIPP
- PVC

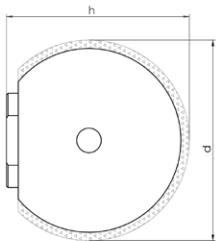
Note: Only suitable for processing CIPP liners and PVC!

Field of Application

- Opening of laterals and inlet lines
- CIPP liner finishing

Article-No.	d inch	h inch	Grit	Weight pounds
70001 M8	1.6	1.5	Diamond	0.55

D•GRIT Ball milling cutter



Materials to be processed

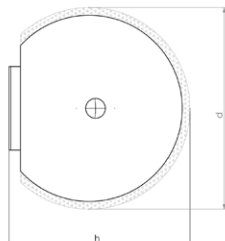
- UV CIPP
- Felt CIPP
- PVC

Note: Only suitable for processing CIPP liners and PVC!

Field of Application

- Opening of laterals and inlet lines
- CIPP liner finishing

Article-No.	d inch	h inch	Grit	Weight pounds
70003 M8	1.2	1.2	Diamond	0.33

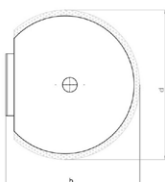
**HM•LINE** Ball milling cutter**Materials to be processed**

- UV CIPP
- PVC
- Roots
- Felt CIPP

Field of Application

- Opening of laterals and inlet lines
- Removal of intruding obstacles
- CIPP liner finishing

Article-No.	d inch	h inch	Grit	Weight pounds
50002 M8	1.6	1.7	Carbide	0.66

HM•LINE Ball milling cutter**Materials to be processed**

- UV CIPP
- PVC
- Roots
- Felt CIPP

Field of Application

- Opening of laterals and inlet lines
- Removal of intruding obstacles
- CIPP liner finishing

Article-No.	d inch	h inch	Grit	Weight pounds
50005 M8	1.2	1.3	Carbide	0.33



HM•LINE Half-ball milling cutter



Materials to be processed

- UV CIPP
- PVC
- Roots
- Felt CIPP

Field of Application

- Opening of laterals and inlet lines
- Removal of intruding obstacles
- CIPP liner finishing

Article-No.	d inch	h inch	Grit	Weight pounds
50004 M8	1.6	1.2	Carbide	0.33

HM•LINE Half-ball milling cutter



Materials to be processed

- UV CIPP
- PVC
- Roots
- Felt CIPP

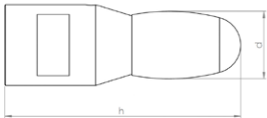
Field of Application

- Opening of laterals and inlet lines
- Removal of intruding obstacles
- CIPP liner finishing

Article-No.	d inch	h inch	Weight pounds
50009 M8	1.2	0.8	0.19



VHM•LINE oval shaped



Materials to be processed

- Cast Iron
- Steel

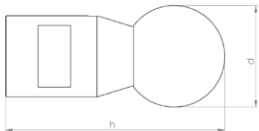
Note: Use on concrete or vitrified clay will destroy the cutting elements!

Field of Application

- Removal of intruding obstacles

Article-No.	d inch	h inch	Segments	Weight pounds
60001 M8	0.6	2.2	1	0.33

VHM•LINE ball shaped



Materials to be processed

- Cast Iron
- Steel

Note: Use on concrete or vitrified clay will destroy the cutting elements!

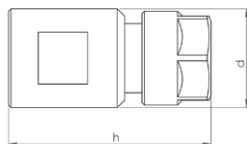
Field of Application

- Removal of intruding obstacles

Article-No.	d inch	h inch	Segments	Weight pounds
60002 M8	1.0	2.2	1	0.33



Adapter for mounting commercially available shank tools Ø 1/4"



Description

CNC fabricated collet chuck adapter for mounting commercially available shank tools.

e.g. burrs, brushes, flap grinders etc...

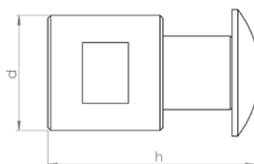
Mounting: Shank Ø 1/4"

Specification

Stainless steel

Article-No.	d inch	h inch	Weight pounds
90172 M8	0.8	1.6	0.15

Adapter for mounting of 2 wheel brushes



Description

CNC fabricated adapter for mounting of 2 wheel brushes.

Mounting shaft Ø 12,7 mm

includes locking screw and cupped washer

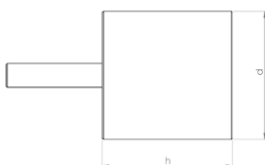
NOTE: This adapter cannot be used to mount a single brush!

Specification

Stainless steel

Article-No.	d inch	h inch	Weight pounds
90144 M8	0.8	1.3	0.11

Mounted point-cylindrical



Description

Corundum mounted point, for working on steel and cast iron.

NOTE: Only useable with adapter!

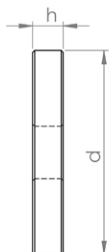
Specification

Corundum

Article-No.	d inch	h inch	Weight pounds
81002	1.3	1.3	0.17



Wheel brush Ø 45 mm



Description

Premium rotary wire brushes for finishing work on CIPP liners and PVC.

Mounting hole Ø 12,7 mm

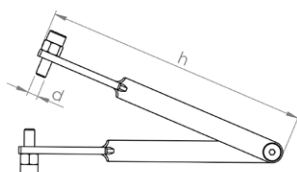
NOTE: May be used only with matching adapter! Packing unit: 2 pieces

Specification

Wire thickness: Ø 0,3 mm

Article-No.	d inch	h inch	Weight pounds
80025	1.8	0.3	0.11

Pin-tipped tongs for safe tool changeover



Description

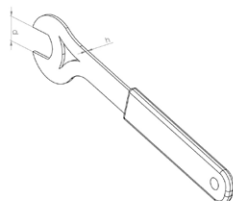
The tongs are fitted with pin (with adjustable gripping depth) which are inserted into the gripping holes of the milling tools, permitting safe changeover without risking damage to the tooling.

Specification

Steel

Article-No.	d inch	h inch	Weight pounds
92002	0.2	5.9	0.27

Open-end wrench 17 mm



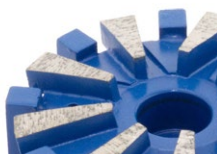
Description

The flat design of the wrench is particularly well suited for milling tools with low base height.

Specification

Steel

Article-No.	d inch	h inch	Weight pounds
92001 SW17	0.7	0.1	0.17

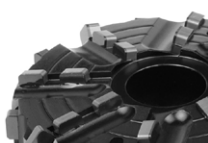
**N•TEC II®**

Field-Proven Standard Diamond Tools with Outstanding Value for Purchase Investment

Materials to be processed

- Reinforced Concrete
- Concrete
- Deposits / Fouling
- Cast Iron
- Vitrified Clay

Page 81

BLACK•LINE

High-Tech Milling Tools made of PCD with Unbeatable Cutting and Stock Removal Performance for Almost Every Material

Materials to be processed

- UV CIPP
- Roots
- PVC
- Felt CIPP

Page 83

linerCUT Pro®

Absolutely Smooth-Running and Precise PCD Cutting Tools for Opening CIPP - Optimized for UV CIPP -

Materials to be processed

- UV CIPP
- PVC
- Felt CIPP

Page 90

linerCUT Pro® 2.0

Absolutely Smooth-Running and Precise PCD Cutting Tools for Opening CIPP - All Kinds of CIPP and PVC -

Materials to be processed

- UV CIPP
- PVC
- Felt CIPP

Page 91

D•GRIT

Milling Tools with Diamond Granules for Opening CIPP - Optimal for UV CIPP and Lined Cast Iron Pipes -

Materials to be processed

- UV CIPP
- PVC
- Felt CIPP

Page 92

HM•LINE

Cost-Efficient Milling Tools with Carbide Granulate Tipping for Opening and Reworking CIPP

Materials to be processed

- UV CIPP
- Roots
- PVC
- Felt CIPP

Page 94

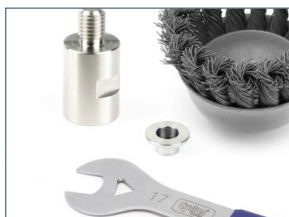
VHM•LINE

Special Milling Tools for Processing Steel and Cast Iron

Materials to be processed

- Cast Iron
- Steel

Page 97



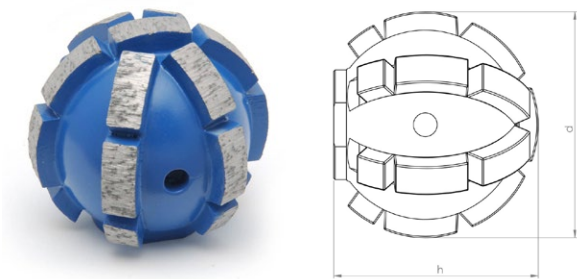
Functional Accessories

High-quality brushes, adapters, extensions, etc.

Page 98



N•TEC II® Ball milling cutter



Materials to be processed

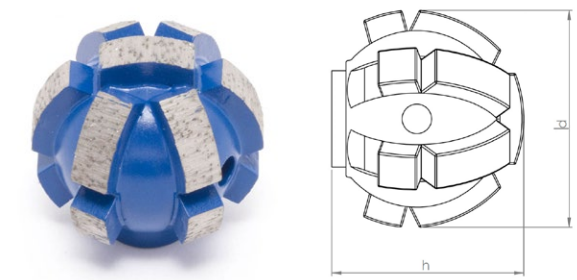
- Reinforced Concrete
- Concrete
- Deposits / Fouling
- Cast Iron
- Vitrified Clay

Field of Application

- Preparatory milling of laterals
- Removal of intruding laterals
- Removal of intruding obstacles

Article-No.	d inch	h inch	Segments	Weight pounds
20020 3/8"UNF	2.0	1.8	19	0.66

N•TEC II® Ball milling cutter



Materials to be processed

- Reinforced Concrete
- Concrete
- Deposits / Fouling
- Cast Iron
- Vitrified Clay

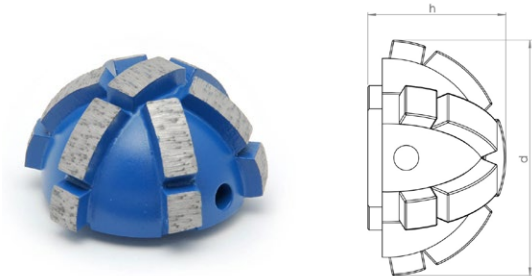
Field of Application

- Preparatory milling of laterals
- Removal of intruding laterals
- Removal of intruding obstacles

Article-No.	d inch	h inch	Segments	Weight pounds
20021 3/8"UNF	1.6	1.5	13	0.44



N•TEC II® Half-ball milling cutter



Materials to be processed

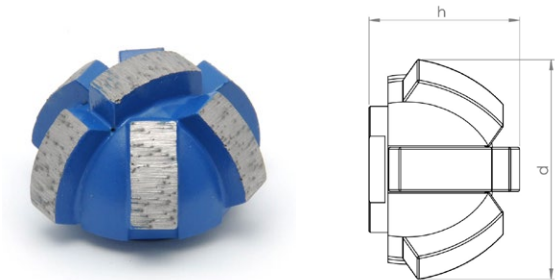
- Reinforced Concrete
- Concrete
- Deposits / Fouling
- Cast Iron
- Vitrified Clay

Field of Application

- Preparatory milling of laterals
- Removal of intruding laterals
- Frontal milling
- Removal of intruding obstacles

Article-No.	d inch	h inch	Segments	Weight pounds
20034 3/8"UNF	2.0	1.1	13	0.33

N•TEC II® Half-ball milling cutter



Materials to be processed

- Reinforced Concrete
- Concrete
- Deposits / Fouling
- Cast Iron
- Vitrified Clay

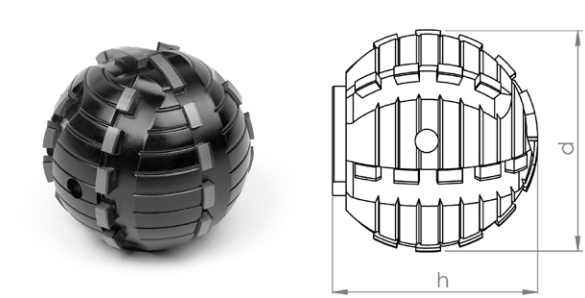
Field of Application

- Preparatory milling of laterals
- Removal of intruding laterals
- Frontal milling
- Removal of intruding obstacles

Article-No.	d inch	h inch	Segments	Weight pounds
20035 3/8"UNF	1.4	1.0	7	0.22



BLACK-LINE Ball milling cutter



Materials to be processed

- UV CIPP
- PVC
- Roots
- Felt CIPP

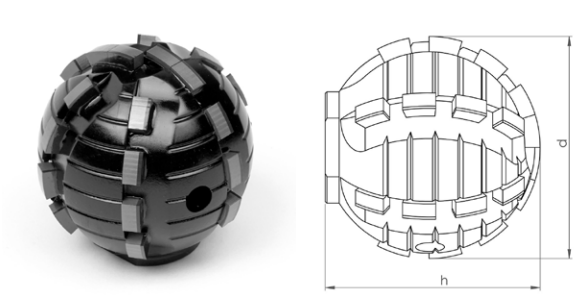
Note: Only suitable for processing CIPP liners and PVC and for cutting roots!

Field of Application

- Opening of laterals and inlet lines
- Removal of intruding obstacles

Article-No.	d inch	h inch	Segments	Weight pounds
BL 11410 3/8"UNF	2.0	1.8	30	0.88

BLACK-LINE Ball milling cutter



Materials to be processed

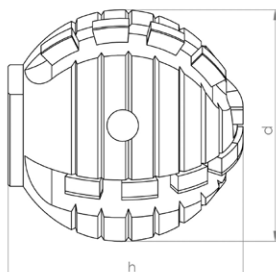
- UV CIPP
- PVC
- Roots
- Felt CIPP

Note: Only suitable for processing CIPP liners and PVC and for cutting roots!

Field of Application

- Opening of laterals and inlet lines
- Removal of intruding obstacles

Article-No.	d inch	h inch	Segments	Weight pounds
BL 11446 3/8"UNF	1.6	1.7	26	0.55


BLACK-LINE Ball milling cutter

Materials to be processed

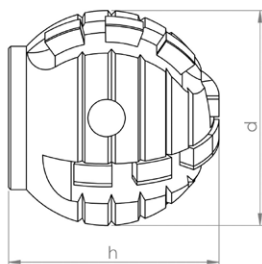
- UV CIPP
- PVC
- Roots
- Felt CIPP

Note: Only suitable for processing CIPP liners and PVC and for cutting roots!

Field of Application

- Opening of laterals and inlet lines
- Removal of intruding obstacles

Article-No.	d inch	h inch	Segments	Weight pounds
BL 11414 3/8"UNF	1.6	1.7	18	0.55

BLACK-LINE Ball milling cutter

Materials to be processed

- UV CIPP
- PVC
- Roots
- Felt CIPP

Note: Use on steel-reinforced concrete will destroy the cutting elements!

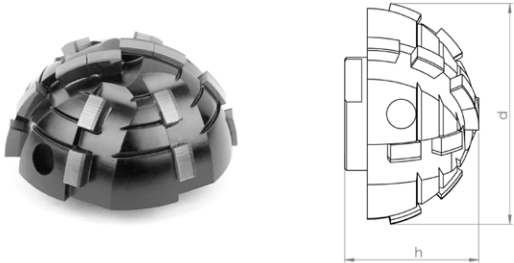
Field of Application

- Opening of laterals and inlet lines
- Removal of intruding obstacles

Article-No.	d inch	h inch	Segments	Weight pounds
BL 11408 3/8"UNF	1.2	1.3	14	0.22



BLACK-LINE Half-ball milling cutter



Materials to be processed

- UV CIPP
- PVC
- Roots
- Felt CIPP

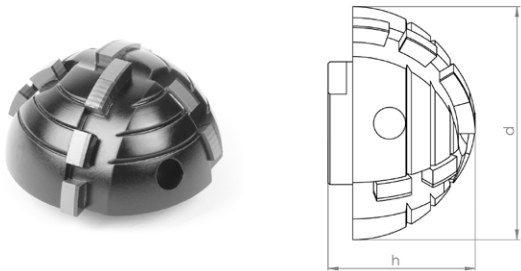
Note: Use on steel-reinforced concrete will destroy the cutting elements!

Field of Application

- Opening of laterals and inlet lines
- Removal of intruding obstacles

Article-No.	d inch	h inch	Segments	Weight pounds
BL 11465 3/8"UNF	1.6	1.0	16	0.33

BLACK-LINE Half-ball milling cutter



Materials to be processed

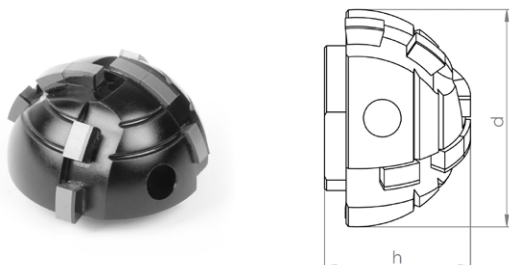
- UV CIPP
- PVC
- Roots
- Felt CIPP

Note: Use on steel-reinforced concrete will destroy the cutting elements!

Field of Application

- Opening of laterals and inlet lines
- Removal of intruding obstacles

Article-No.	d inch	h inch	Segments	Weight pounds
BL 11428 3/8"UNF	1.6	1.0	12	0.15


BLACK-LINE Half-ball milling cutter

Materials to be processed

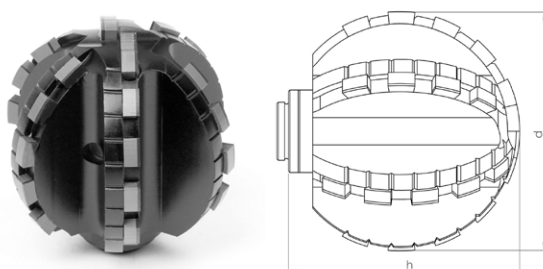
- UV CIPP
- PVC
- Roots
- Felt CIPP

Note: Use on steel-reinforced concrete will destroy the cutting elements!

Field of Application

- Opening of laterals and inlet lines
- Removal of intruding obstacles

Article-No.	d inch	h inch	Segments	Weight pounds
BL 11429 3/8"UNF	1.2	0.8	8	0.13

BLACK-LINE Ball milling cutter Type ProView®

Materials to be processed

- UV CIPP
- PVC
- Roots
- Felt CIPP

Note: Only suitable for processing CIPP liners and PVC and for cutting roots!

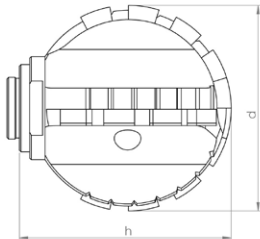
Field of Application

- Opening of laterals and inlet lines
- Removal of intruding obstacles

Article-No.	d inch	h inch	Segments	Weight pounds
BL 11108 3/8"UNF	2.0	1.8	30	0.33



BLACK-LINE Ball milling cutter Type ProView®



Materials to be processed

- UV CIPP
- PVC
- Roots
- Felt CIPP

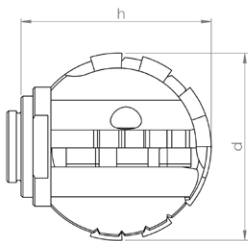
Note: Only suitable for processing CIPP liners and PVC and for cutting roots!

Field of Application

- Opening of laterals and inlet lines
- Removal of intruding obstacles

Article-No.	d inch	h inch	Segments	Weight pounds
BL 11103 3/8"UNF	1.6	1.5	18	0.33

BLACK-LINE Ball milling cutter Type ProView®



Materials to be processed

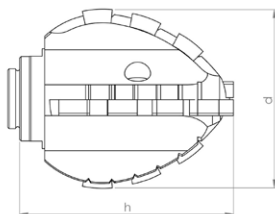
- UV CIPP
- PVC
- Roots
- Felt CIPP

Note: Only suitable for processing CIPP liners and PVC and for cutting roots!

Field of Application

- Opening of laterals and inlet lines
- Removal of intruding obstacles

Article-No.	d inch	h inch	Segments	Weight pounds
BL 11101 3/8"UNF	1.3	1.2	14	0.13

**BLACK•LINE** Double-cone milling cutter Type ProView®**Materials to be processed**

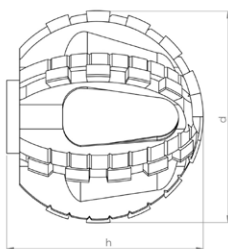
- UV CIPP
- PVC
- Roots
- Felt CIPP

Note: Only suitable for processing CIPP liners and PVC and for cutting roots!

Field of Application

- Opening of laterals and inlet lines

Article-No.	d inch	h inch	Segments	Weight pounds
BL 11107 3/8"UNF	1.4	1.6	16	0.22

BLACK•LINE Ball milling cutter Type ProView®**Materials to be processed**

- UV CIPP
- PVC
- Roots
- Felt CIPP

Note: Only suitable for processing CIPP liners and PVC and for cutting roots!

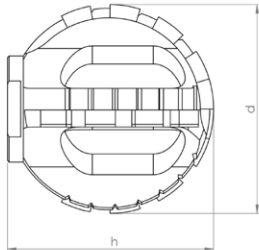
Field of Application

- Opening of laterals and inlet lines
- Removal of intruding obstacles

Article-No.	d inch	h inch	Segments	Weight pounds
BL 11114 3/8"UNF	2.0	1.8	30	0.33



BLACK-LINE Ball milling cutter Type ProView®



Materials to be processed

- UV CIPP
- PVC
- Roots
- Felt CIPP

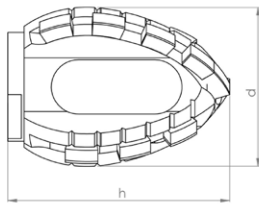
Note: Only suitable for processing CIPP liners and PVC and for cutting roots!

Field of Application

- Opening of laterals and inlet lines
- Removal of intruding obstacles

Article-No.	d inch	h inch	Segments	Weight pounds
BL 11110 3/8"UNF	1.6	1.5	18	0.33

BLACK-LINE Double-cone milling cutter Type ProView®



Materials to be processed

- UV CIPP
- PVC
- Roots
- Felt CIPP

Note: Only suitable for processing CIPP liners and PVC and for cutting roots!

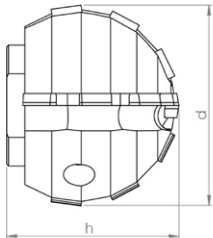
Field of Application

- Opening of laterals and inlet lines

Article-No.	d inch	h inch	Segments	Weight pounds
BL 11112 3/8"UNF	1.4	1.6	16	0.22



linerCUT Pro® Ball milling cutter



Materials to be processed

- UV CIPP
- Felt CIPP
- PVC

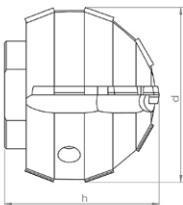
Note: Only suitable for processing CIPP liners and PVC!

Field of Application

- Opening of laterals and inlet lines

Article-No.	d inch	h inch	Segments	Weight pounds
BL 11443 3/8"UNF	1.6	1.4	12	0.44

linerCUT Pro® Ball milling cutter



Materials to be processed

- UV CIPP
- Felt CIPP
- PVC

Note: Only suitable for processing CIPP liners and PVC!

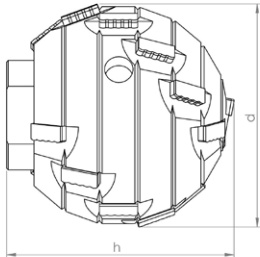
Field of Application

- Opening of laterals and inlet lines

Article-No.	d inch	h inch	Segments	Weight pounds
BL 11442 3/8"UNF	1.2	1.1	14	0.22



linercUT Pro® 2.0 Ball milling cutter



Materials to be processed

- UV CIPP
- Felt CIPP
- PVC

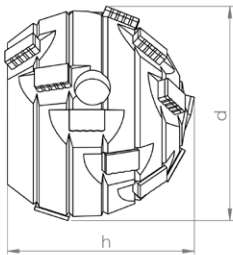
Note: Only suitable for processing CIPP liners and PVC!

Field of Application

- Opening of laterals and inlet lines

Article-No.	d inch	h inch	Segments	Weight pounds
BL 11448 3/8"UNF	1.6	1.6	18	0.55

linercUT Pro® 2.0 Ball milling cutter



Materials to be processed

- UV CIPP
- Felt CIPP
- PVC

Note: Only suitable for processing CIPP liners and PVC!

Field of Application

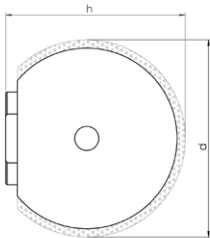
- Opening of laterals and inlet lines

Article-No.	d inch	h inch	Segments	Weight pounds
BL 11447 3/8"UNF	1.2	1.0	16	0.22



D•GRIT

Ball milling cutter



Materials to be processed

- UV CIPP
- Felt CIPP
- PVC

Note: Only suitable for processing CIPP liners and PVC!

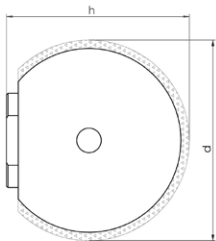
Field of Application

- Opening of laterals and inlet lines
- CIPP liner finishing

Article-No.	d inch	h inch	Grit	Weight pounds
70001 3/8"UNF	1.6	1.5	Diamond	0.55

D•GRIT

Ball milling cutter



Materials to be processed

- UV CIPP
- Felt CIPP
- PVC

Note: Only suitable for processing CIPP liners and PVC!

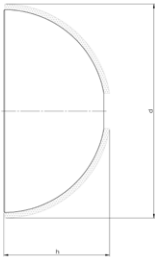
Field of Application

- Opening of laterals and inlet lines
- CIPP liner finishing

Article-No.	d inch	h inch	Grit	Weight pounds
70003 3/8"UNF	1.2	1.2	Diamond	0.33



D•GRIT Half-ball milling cutter



Materials to be processed

- UV CIPP
- Felt CIPP
- PVC

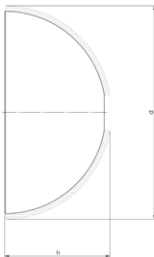
Note: Only suitable for processing CIPP liners and PVC!

Field of Application

- Opening of laterals and inlet lines
- CIPP liner finishing

Article-No.	d inch	h inch	Grit	Weight pounds
70008 3/8"UNF	2.0	1.0	Diamond	0.22

D•GRIT Half-ball milling cutter



Materials to be processed

- UV CIPP
- Felt CIPP
- PVC

Note: Only suitable for processing CIPP liners and PVC!

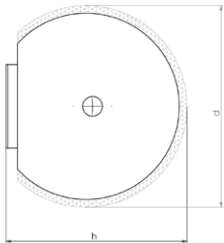
Field of Application

- Opening of laterals and inlet lines
- CIPP liner finishing

Article-No.	d inch	h inch	Grit	Weight pounds
70009 3/8"UNF	1.6	0.8	Diamond	0.13



HM•LINE Ball milling cutter



Materials to be processed

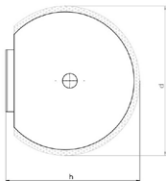
- UV CIPP
- PVC
- Roots
- Felt CIPP

Field of Application

- Opening of laterals and inlet lines
- Removal of intruding obstacles
- CIPP liner finishing

Article-No.	d inch	h inch	Grit	Weight pounds
50002 3/8"UNF	1.6	1.7	Carbide	0.66

HM•LINE Ball milling cutter



Materials to be processed

- UV CIPP
- PVC
- Roots
- Felt CIPP

Field of Application

- Opening of laterals and inlet lines
- Removal of intruding obstacles
- CIPP liner finishing

Article-No.	d inch	h inch	Grit	Weight pounds
50005 3/8"UNF	1.2	1.3	Carbide	0.33



HM•LINE Half-ball milling cutter



Materials to be processed

- UV CIPP
- PVC
- Roots
- Felt CIPP

Field of Application

- Opening of laterals and inlet lines
- Removal of intruding obstacles
- CIPP liner finishing

Article-No.	d inch	h inch	Grit	Weight pounds
50004 3/8"UNF	1.6	1.2	Carbide	0.33

HM•LINE Half-ball milling cutter



Materials to be processed

- UV CIPP
- PVC
- Roots
- Felt CIPP

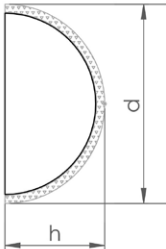
Field of Application

- Opening of laterals and inlet lines
- Removal of intruding obstacles
- CIPP liner finishing

Article-No.	d inch	h inch	Weight pounds
50009 3/8"UNF	1.2	0.8	0.19



HM•LINE Half-ball milling cutter



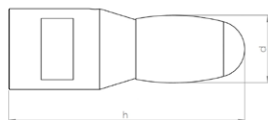
Materials to be processed

- UV CIPP
- PVC
- Roots
- Felt CIPP

Field of Application

- Opening of laterals and inlet lines
- Removal of intruding obstacles
- CIPP liner finishing

Article-No.	d inch	h inch	Grit	Weight pounds
51001 3/8"UNF	2.0	1.0	Carbide	0.22


VHM•LINE oval shaped

Materials to be processed

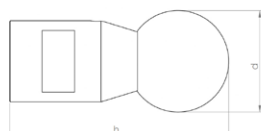
- Cast Iron
- Steel

Note: Use on concrete or vitrified clay will destroy the cutting elements!

Field of Application

- Removal of intruding obstacles

Article-No.	d inch	h inch	Segments	Weight pounds
60001 3/8"UNF	0.6	2.2	1	0.33

VHM•LINE ball shaped

Materials to be processed

- Cast Iron
- Steel

Note: Use on concrete or vitrified clay will destroy the cutting elements!

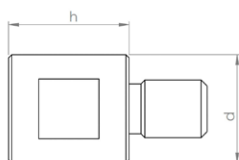
Field of Application

- Removal of intruding obstacles

Article-No.	d inch	h inch	Segments	Weight pounds
60002 3/8"UNF	1.0	2.2	1	0.33



Extension 20 mm



Description

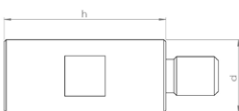
CNC fabricated tool extension for increased working radius of robot arm.

Specification

Stainless steel

Article-No.	d inch	h inch	Weight pounds
90138 3/8"UNF	0.7	0.8	0.11

Extension 40 mm



Description

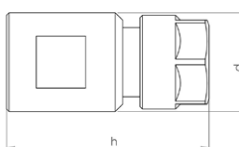
CNC fabricated tool extension for increased working radius of robot arm.

Specification

Stainless steel

Article-No.	d inch	h inch	Weight pounds
90139 3/8"UNF	0.7	1.6	0.15

Adapter for mounting commercially available shank tools Ø 1/4"



Description

CNC fabricated collet chuck adapter for mounting commercially available shank tools.
e.g. burrs, brushes, flap grinders etc...
Mounting: Shank Ø 1/4"

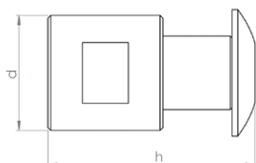
Specification

Stainless steel

Article-No.	d inch	h inch	Weight pounds
90172 3/8"UNF	0.8	1.6	0.15



Adapter for mounting of 2 wheel brushes



Description

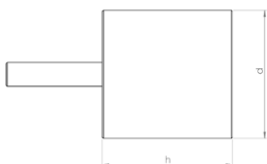
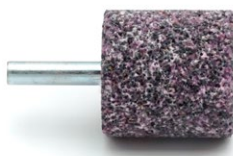
CNC fabricated adapter for mounting of 2 wheel brushes.
Mounting shaft Ø 12,7 mm
includes locking screw and cupped washer
NOTE: This adapter cannot be used to mount a single brush!

Specification

Stainless steel

Article-No.	d inch	h inch	Weight pounds
90140 3/8"UNF	0.8	1.3	0.11

Mounted point-cylindrical



Description

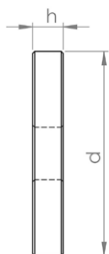
Corundum mounted point, for working on steel and cast iron.
NOTE: Only useable with adapter!

Specification

Corundum

Article-No.	d inch	h inch	Weight pounds
81002	1.3	1.3	0.17

Wheel brush Ø 45 mm



Description

Premium rotary wire brushes for finishing work on CIPP liners and PVC.
Mounting hole Ø 12,7 mm
NOTE: May be used only with matching adapter! Packing unit: 2 pieces

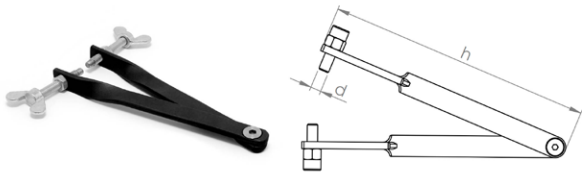
Specification

Wire thickness: Ø 0,3 mm

Article-No.	d inch	h inch	Weight pounds
80025	1.8	0.3	0.11



Pin-tipped tongs for safe tool changeover



Description

The tongs are fitted with pin (with adjustable gripping depth) witch are inserted into the gripping holes of the milling tools, permitting safe changeover without risking damage to the tooling.

Specification

Steel

Article-No.	d inch	h inch	Weight pounds
92002	0.2	5.9	0.27

Open-end wrench 17 mm



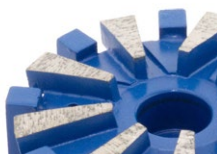
Description

The flat design of the wrench is particularly well suited for milling tools with low base height.

Specification

Steel

Article-No.	d inch	h inch	Weight pounds
92001 SW17	0.7	0.1	0.17

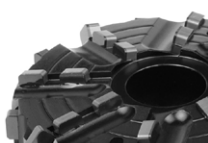
**N•TEC II®**

Field-Proven Standard Diamond Tools with Outstanding Value for Purchase Investment

Materials to be processed

- Reinforced Concrete
- Concrete
- Deposits / Fouling
- Cast Iron
- Vitrified Clay

Page 103

BLACK•LINE

High-Tech Milling Tools made of PCD with Unbeatable Cutting and Stock Removal Performance for Almost Every Material

Materials to be processed

- UV CIPP
- Roots
- PVC
- Felt CIPP

Page 104

linerCUT Pro®

Absolutely Smooth-Running and Precise PCD Cutting Tools for Opening CIPP - Optimized for UV CIPP -

Materials to be processed

- UV CIPP
- PVC
- Felt CIPP

Page 108

linerCUT Pro® 2.0

Absolutely Smooth-Running and Precise PCD Cutting Tools for Opening CIPP - All Kinds of CIPP and PVC -

Materials to be processed

- UV CIPP
- PVC
- Felt CIPP

Page 109

D•GRIT

Milling Tools with Diamond Granules for Opening CIPP - Optimal for UV CIPP and Lined Cast Iron Pipes -

Materials to be processed

- UV CIPP
- PVC
- Felt CIPP

Page 110

HM•LINE

Cost-Efficient Milling Tools with Carbide Granulate Tipping for Opening and Reworking CIPP

Materials to be processed

- UV CIPP
- Roots
- PVC
- Felt CIPP

Page 111

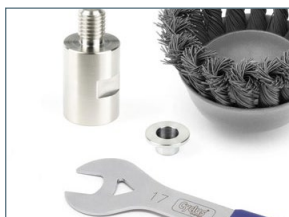
VHM•LINE

Special Milling Tools for Processing Steel and Cast Iron

Materials to be processed

- Cast Iron
- Steel

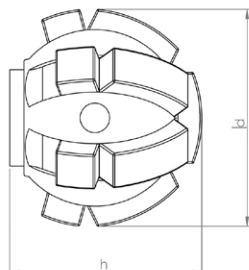
Page 113



Functional Accessories

High-quality brushes, adapters, extensions, etc.

Page 114

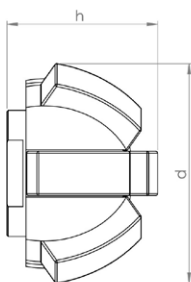
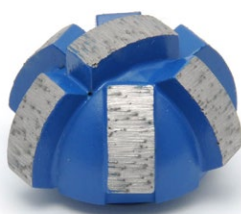

N•TEC II® Ball milling cutter

Materials to be processed

- Reinforced Concrete
- Concrete
- Deposits / Fouling
- Cast Iron
- Vitrified Clay

Field of Application

- Preparatory milling of laterals
- Removal of intruding laterals
- Removal of intruding obstacles

Article-No.	d inch	h inch	Segments	Weight pounds
20021 1/4"UNC	1.6	1.5	13	0.44

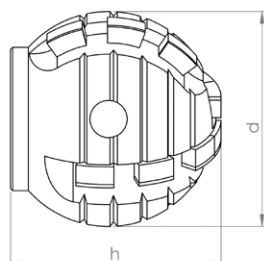
N•TEC II® Half-ball milling cutter

Materials to be processed

- Reinforced Concrete
- Concrete
- Deposits / Fouling
- Cast Iron
- Vitrified Clay

Field of Application

- Preparatory milling of laterals
- Removal of intruding laterals
- Frontal milling
- Removal of intruding obstacles

Article-No.	d inch	h inch	Segments	Weight pounds
20035 1/4"UNC	1.4	1.0	7	0.22


BLACK-LINE Ball milling cutter

Materials to be processed

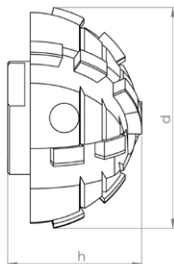
- UV CIPP
- PVC
- Roots
- Felt CIPP

Note: Use on steel-reinforced concrete will destroy the cutting elements!

Field of Application

- Opening of laterals and inlet lines
- Removal of intruding obstacles

Article-No.	d inch	h inch	Segments	Weight pounds
BL 11408 1/4"UNC	1.2	1.3	14	0.22

BLACK-LINE Half-ball milling cutter

Materials to be processed

- UV CIPP
- PVC
- Roots
- Felt CIPP

Note: Use on steel-reinforced concrete will destroy the cutting elements!

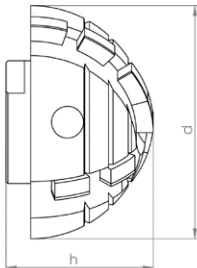
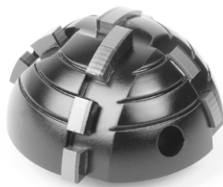
Field of Application

- Opening of laterals and inlet lines
- Removal of intruding obstacles

Article-No.	d inch	h inch	Segments	Weight pounds
BL 11465 1/4"UNC	1.6	1.0	16	0.33



BLACK-LINE Half-ball milling cutter



Materials to be processed

- UV CIPP
- PVC
- Roots
- Felt CIPP

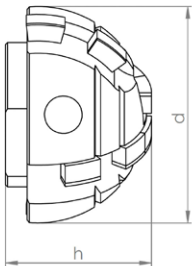
Note: Use on steel-reinforced concrete will destroy the cutting elements!

Field of Application

- Opening of laterals and inlet lines
- Removal of intruding obstacles

Article-No.	d inch	h inch	Segments	Weight pounds
BL 11428 1/4"UNC	1.6	1.0	12	0.15

BLACK-LINE Half-ball milling cutter



Materials to be processed

- UV CIPP
- PVC
- Roots
- Felt CIPP

Note: Use on steel-reinforced concrete will destroy the cutting elements!

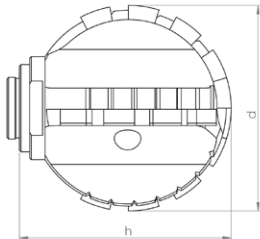
Field of Application

- Opening of laterals and inlet lines
- Removal of intruding obstacles

Article-No.	d inch	h inch	Segments	Weight pounds
BL 11429 1/4"UNC	1.2	0.8	8	0.13



BLACK-LINE Ball milling cutter Type ProView®



Materials to be processed

- UV CIPP
- PVC
- Roots
- Felt CIPP

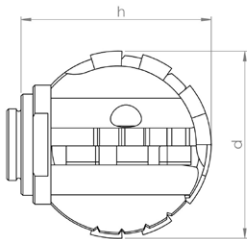
Note: Only suitable for processing CIPP liners and PVC and for cutting roots!

Field of Application

- Opening of laterals and inlet lines
- Removal of intruding obstacles

Article-No.	d inch	h inch	Segments	Weight pounds
BL 11103 1/4"UNC	1.6	1.5	18	0.33

BLACK-LINE Ball milling cutter Type ProView®



Materials to be processed

- UV CIPP
- PVC
- Roots
- Felt CIPP

Note: Only suitable for processing CIPP liners and PVC and for cutting roots!

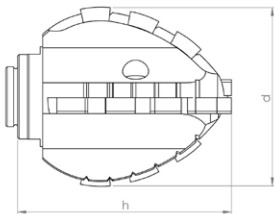
Field of Application

- Opening of laterals and inlet lines
- Removal of intruding obstacles

Article-No.	d inch	h inch	Segments	Weight pounds
BL 11101 1/4"UNC	1.3	1.2	14	0.13



BLACK-LINE Double-cone milling cutter Type ProView®



Materials to be processed

- UV CIPP
- PVC
- Roots
- Felt CIPP

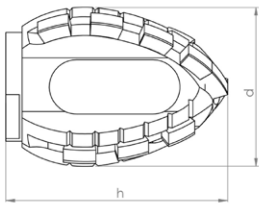
Note: Only suitable for processing CIPP liners and PVC and for cutting roots!

Field of Application

- Opening of laterals and inlet lines

Article-No.	d inch	h inch	Segments	Weight pounds
BL 11107 1/4"UNC	1.4	1.6	16	0.22

BLACK-LINE Double-cone milling cutter Type ProView®



Materials to be processed

- UV CIPP
- PVC
- Roots
- Felt CIPP

Note: Only suitable for processing CIPP liners and PVC and for cutting roots!

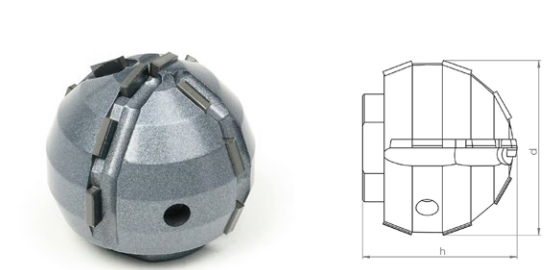
Field of Application

- Opening of laterals and inlet lines

Article-No.	d inch	h inch	Segments	Weight pounds
BL 11112 1/4"UNC	1.4	1.6	16	0.22



linerCUT Pro® Ball milling cutter



Materials to be processed

- UV CIPP
- Felt CIPP
- PVC

Note: Only suitable for processing CIPP liners and PVC!

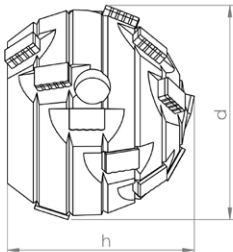
Field of Application

- Opening of laterals and inlet lines

Article-No.	d inch	h inch	Segments	Weight pounds
BL 11442 1/4"UNC	1.2	1.1	14	0.22



linerCUT Pro® 2.0 Ball milling cutter



Materials to be processed

- UV CIPP
- Felt CIPP
- PVC

Note: Only suitable for processing CIPP liners and PVC!

Field of Application

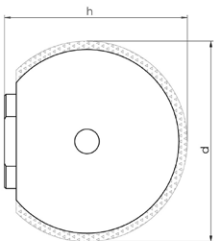
- Opening of laterals and inlet lines

Article-No.	d inch	h inch	Segments	Weight pounds
BL 11447 1/4"UNC	1.2	1.0	16	0.22



D•GRIT

Ball milling cutter



Materials to be processed

- UV CIPP
- Felt CIPP
- PVC

Note: Only suitable for processing CIPP liners and PVC!

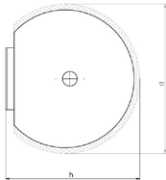
Field of Application

- Opening of laterals and inlet lines
- CIPP liner finishing

Article-No.	d inch	h inch	Grit	Weight pounds
70003 1/4"UNC	1.2	1.2	Diamond	0.33



HM•LINE Ball milling cutter



Materials to be processed

- UV CIPP
- PVC
- Roots
- Felt CIPP

Field of Application

- Opening of laterals and inlet lines
- Removal of intruding obstacles
- CIPP liner finishing

Article-No.	d inch	h inch	Grit	Weight pounds
50005 1/4"UNC	1.2	1.3	Carbide	0.33

HM•LINE Half-ball milling cutter



Materials to be processed

- UV CIPP
- PVC
- Roots
- Felt CIPP

Field of Application

- Opening of laterals and inlet lines
- Removal of intruding obstacles
- CIPP liner finishing

Article-No.	d inch	h inch	Grit	Weight pounds
50004 1/4"UNC	1.6	1.2	Carbide	0.33



HM•LINE Half-ball milling cutter



Materials to be processed

- UV CIPP
- PVC
- Roots
- Felt CIPP

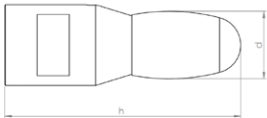
Field of Application

- Opening of laterals and inlet lines
- Removal of intruding obstacles
- CIPP liner finishing

Article-No.	d inch	h inch	Weight pounds
50009 1/4"UNC	1.2	0.8	0.19



VHM•LINE oval shaped



Materials to be processed

- Cast Iron
- Steel

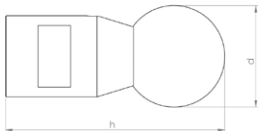
Note: Use on concrete or vitrified clay will destroy the cutting elements!

Field of Application

- Removal of intruding obstacles

Article-No.	d inch	h inch	Segments	Weight pounds
60001 1/4"UNC	0.6	2.2	1	0.33

VHM•LINE ball shaped



Materials to be processed

- Cast Iron
- Steel

Note: Use on concrete or vitrified clay will destroy the cutting elements!

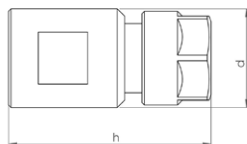
Field of Application

- Removal of intruding obstacles

Article-No.	d inch	h inch	Segments	Weight pounds
60002 1/4"UNC	1.0	2.2	1	0.33



Adapter for mounting commercially available shank tools Ø 1/4"



Description

CNC fabricated collet chuck adapter for mounting commercially available shank tools.

e.g. burrs, brushes, flap grinders etc...

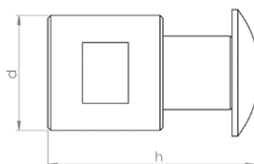
Mounting: Shank Ø 1/4"

Specification

Stainless steel

Article-No.	d inch	h inch	Weight pounds
90172 1/4"UNC	0.8	1.6	0.15

Adapter for mounting of 2 wheel brushes



Description

CNC fabricated adapter for mounting of 2 wheel brushes.

Mounting shaft Ø 12,7 mm

includes locking screw and cupped washer

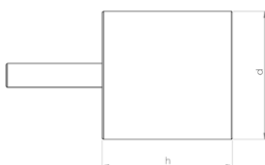
NOTE: This adapter cannot be used to mount a single brush!

Specification

Stainless steel

Article-No.	d inch	h inch	Weight pounds
90145 1/4"UNC	0.8	1.3	0.11

Mounted point-cylindrical



Description

Corundum mounted point, for working on steel and cast iron.

NOTE: Only useable with adapter!

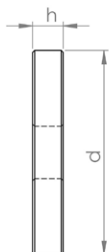
Specification

Corundum

Article-No.	d inch	h inch	Weight pounds
81002	1.3	1.3	0.17



Wheel brush Ø 45 mm



Description

Premium rotary wire brushes for finishing work on CIPP liners and PVC.

Mounting hole Ø 12,7 mm

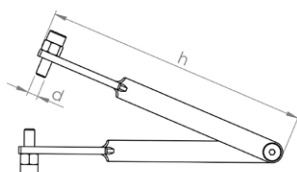
NOTE: May be used only with matching adapter! Packing unit: 2 pieces

Specification

Wire thickness: Ø 0,3 mm

Article-No.	d inch	h inch	Weight pounds
80025	1.8	0.3	0.11

Pin-tipped tongs for safe tool changeover



Description

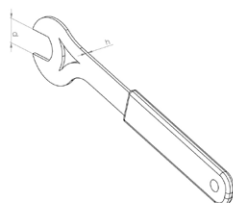
The tongs are fitted with pin (with adjustable gripping depth) which are inserted into the gripping holes of the milling tools, permitting safe changeover without risking damage to the tooling.

Specification

Steel

Article-No.	d inch	h inch	Weight pounds
92002	0.2	5.9	0.27

Open-end wrench 17 mm



Description

The flat design of the wrench is particularly well suited for milling tools with low base height.

Specification

Steel

Article-No.	d inch	h inch	Weight pounds
92001 SW17	0.7	0.1	0.17